

## 6" J-FORCE™

JF6X15 (PN 64915)

JF6X22 (PNs 65380, 65381)

### PRODUCT INSTRUCTIONS

PI-178



The 6" J-Force™ is a self-powered rotating nozzle designed to easily navigate and clean 6" pipes with up to 90° bends. The 6" J-Force has front, side, and rear jets that clear blockages, clean, and provide thrust to propel the tool down the pipe. The nozzle comes equipped with an eddy-current braking system which controls rotation speed for maximum cleaning power and minimum wear.

Read these instructions thoroughly before installing, connecting, or using the J-Force tool. If any questions remain, call JETSTREAM at (800) 231-8192 or (832) 590-1300. Also read the yellow JETSTREAM SAFETY WARNING pamphlet included with the shipment of your new J-Force and reproduced inside this publication. This product is sold with the understanding that the purchaser agrees to thoroughly train all operators and maintenance personnel in the correct and safe installation, operation and maintenance of the product and to provide adequate supervision of personnel at all times. Retain these instructions for future reference. If this product is resold or otherwise conveyed, purchaser must pass on the instructions to the new user.

# TABLE OF CONTENTS

Section 1: Safety .....	3
Section 2: Product Description .....	12
Section 3: Preparation for Use .....	14
Section 4: Setup .....	15
Section 5: Operation .....	16
Section 6: Service .....	17
Section 7: Troubleshooting .....	19
Appendix A .....	20
Exploded Views .....	20
Parts Placement .....	21
Appendix B .....	22
Accessories .....	22
Accessory Name .....	22
Accessory Name .....	23
Appendix C .....	25
Flow Charts .....	25
Warranty .....	36



## SECTION 1: SAFETY



Incorrect Use of High Pressure Waterblast  
Equipment May Cause Serious Injury  
Read these instructions in their entirety  
before using any JETSTREAM products.

This information was prepared to aid in the identification of potentially unsafe conditions when using high pressure waterblast equipment. It should be noted that other potential hazards may exist which might have not been mentioned in this brochure.

In all cases, JETSTREAM products are sold with the understanding that the purchaser agrees to thoroughly train all operating and maintenance personnel in the correct and safe installation, operation of maintenance of waterblast equipment and to provide adequate supervision of personnel at all times.

Read the following in its entirety before connecting, operating or repairing equipment. Purchasers and operators also should be familiar with the current version of the “Industry Best Practices for the Use of High Pressure Waterjetting Equipment” published by the Waterjet Technology Association, as well as any applicable OSHA regulations, standards and guidelines.

Should any questions arise concerning safe and proper procedure, contact JETSTREAM prior to the installation or use at (800) 231-8192 or (832) 590-1300.

# GENERAL WATERBLAST

1. Use only clear, clean water in high pressure system.
2. Place barricades with warning signs or barricade tape around work area.
3. Outfit all operators with Personal Protective Equipment (PPE). Hard hat with plastic face shield, rainsuit, non-skid knee boots **with metatarsal protection**, gloves, ear protection and body armor rated for operating pressures are considered minimum safety equipment. Proper respiratory protection is required where dangerous fumes or dust is present or created by the waterblasting operation. Follow applicable OSHA regulations, standards and guidelines regarding the use of respiratory protection if harmful fumes or dust is present during, or created by the waterblasting operation.
4. Use products intended for high pressure waterblasting only.
5. **No product should be altered** without written consent of the manufacturer.
6. **Read and follow all manufacturer's instructions** prior to using any waterblast product. Contact manufacturer.
7. Thoroughly review alternative methods before initiating any potentially dangerous waterblasting operation. Fully automated, semi-automated, and/or mechanized methods should all be considered first. Contact the applicable waterblasting manufacturers for assistance and recommendations.
8. The operator handling the cleaning device (with nozzle) must always have control of water pressure. A surface cleaning operator should operate a trigger style control gun capable of instantaneously stopping pressure to nozzle. A tube cleaning lance operator should operate a foot gun capable of instantaneously stopping pressure to the lance.
9. Inspect the condition of all components prior to use. Use no items which are in questionable condition.
10. Check the condition of thread connections prior to the make-up of any high pressure connection. Use Teflon tape and anti-seize on male pipe (NPT) thread for sealing purposes. Do not let tape overlap the male pipe thread end. Tape fragments may enter system water stream and clog nozzle's orifices.

**Do Not use a component with missing or damaged threads on the high pressure connections.**

11. Properly tighten all high pressure connections. All NPT connections must have a minimum engagement of four (4) threads. Pipe (NPT) connections should be made up hand tight plus two (2) full wrenched turns. Do not tighten NPT threads past two (2) wrenched turns.

**⚠ CAUTION** Use wrench flats (when available) or a properly adjusted smooth jaw plier wrench (JS PN 64119) for tightening components. Avoid using pipe wrench as wrench marks will cause high pressure components to crack and fail.

12. All high pressure hose connections require a hose restraint (whip check), including connection at fluid end discharge.

13. Before attaching a nozzle to the control gun or tube cleaning lance, **operate the pump at low speed to purge** dirt and debris from system. **Dirt and debris can clog nozzle orifice(s) and cause excessive system pressure which could lead to a lance failure.**

14. With nozzle installed, **operate the pump at a low speed (low pressure) for test.** Should system repairs or adjustments be necessary, stop pump and relieve all pressure before making required repairs or adjustments. The pump operator should watch the nozzle operator at all times in case any difficulty arises and it becomes necessary to depressurize system. If the pump operator does not have a clear line of sight to the nozzle operator, it may be necessary to have another employee available to communicate between the nozzle and pump operators.

15. With the system operating properly, **increase pump speed slowly until operating pressure is reached** and adjusted. Pressure adjustments should always be made slowly. The nozzle operator shall be warned before any pressure adjustment is made by the pump operator. A sudden change in reaction force may cause the nozzle operator to lose balance.

16. Use **minimum pressure required** for cleaning. Do not exceed the operating pressure of the system's lowest pressure-rated component. All equipment pressure rating markers and warning tags should be left intact.

17. Waterblast operators must be made aware that the **cleaning nozzle's discharge jets(s) can inflict serious body wounds.** Supervisors should demonstrate the potential danger of discharge jet(s) by showing all new operators the effect of a waterjet by cutting a scrap piece of wood such as a 2" x 4".

18. If equipment malfunctions or a system malfunction is suspected, immediately stop cleaning activity and relieve the pressure in the system before attempting any repairs. Always follow the manufacturer's repair instructions.

19. Only trained persons should be authorized to perform any maintenance or repair.

20. Following any repairs, the system should be operated at low pressure for test. Bring equipment up to operating pressure slowly.

21. For shutdown in freezing conditions, even for brief periods, drain water from all components. Prior to starting operations in freezing conditions, the operation of all equipment components must be checked carefully to make sure components are not frozen and can be operated.

22. Store components properly by protecting them from damage when not in use. Be sure all safety warning tags and markers remain intact.

## **PRESSURE RELIEF DEVICES**

1. **Read General Safety** section prior to installing Relief Valve and/or Pressure Relief Devices.

2. A waterblast system should include both primary and secondary pressure relief protection:

A. For primary protection a primary rupture disc assembly or spring-loaded relief set at 1.2 times, maximum operating pressure is recommended (i.e. relief valve is set at 12,000 psi if maximum operating pressure is 10,000 psi)

B. For secondary protection a rupture disc assembly containing a manufacturer's approved disc having a burst rating of 1.4 times maximum operating pressure is recommended.

**⚠ WARNING** Only use a rupture disc holder which will NOT permit the use of coins or other objects in place of discs.

3. Relief devices should never be mounted so the discharge could strike personnel.

4. Never install a shut-off valve between the pump and relief device.

5. "Set pressure" must be prominently displayed on all relief devices. Never install or use a relief device unless its "set pressure" is known.

6. Do not attempt to correct a leaking relief valve by increasing spring tension as this will increase its set pressure.
7. Do not use a pressure relief valve as a combination relief and throttling device.
8. Keep relief valve dry during freezing conditions.

**NOTE:** Pressure relief devices are imperative for the protection of both operator and equipment from dangerous over-pressurization.

## **HIGH PRESSURE HOSE**

1. **Read General Safety** section prior to connecting high pressure hose.
2. Do not use a high pressure hose with a burst rating less than 2.5 times the pressure at which it will operate. 10,000 psi operating pressure high pressure must have a minimum 25,000 psi burst rating. 8,000 psi operating hose must have a minimum 22,000 psi burst rating.
3. Do not use a high pressure hose that has an unknown burst rating or manufacturer's operating pressure rating.
4. Use of a Safety Shroud is strongly recommended for added safety where hose connects to control gun.
5. Use of hose restraint (whip check) is required at all hose connections, including connections at fluid end.
6. Always apply wrench to wrench flats when making threaded connections. Do not apply wrench on the end fitting ferrule (collar).
7. **Remove hose from service if:**
  - A. Cover is damaged and reinforcing wires are exposed to rust and corrosion;
  - B. Cover is loose, has blisters or bulges;
  - C. Hose has been crushed or kinked;
  - D. End fitting shows evidence of damage, slippage, or leakage.
  - E. Hose has been exposed to pressures greater than 50% of burst rating; or
  - F. Hose is three or more years old, regardless of condition.
8. Disconnect, drain, coil and store hose properly after use.
9. Never attempt to repair or recouple high pressure hoses in field. High pressure hose end fittings are the permanently crimped type and can

only be properly installed with hydraulic crimping equipment.

## NOZZLES

1. Read **General Safety** section.

2. Nozzle flow ratings must be compatible with pump discharge and pump pressure rating. (See Nozzle Flow Rating Chart on page 26.)

3. Use only nozzles with a manufacturer's pressure rating of at least the operating pressure or a burst rating or no less than 3.0 times the desired operating pressure.

4. Prior to installation, make sure the nozzle has no clogged orifices.

5. Apply 3 - 4 wraps of Teflon tape to male connection threads on the nozzle. Apply anti-seize compound over the sealant tape for additional protection against galling in connection threads. Wrench connection 1 1/2 - 2 turns past hand tight. A minimal thread engagement of four (4) threads should exist on all Jetstream NPT pipe connections.

6. **⚠ CAUTION** Use wrench flats (when available) or a properly adjusted smooth jaw plier wrench (JS PN 64119) to tighten nozzle. Avoid using pipe wrench as wrench marks will cause nozzles to crack and fail.

7. Blocked orifice(s) can cause excessive system pressure and failure. If orifice(s) appear clogged or partially blocked with dirt or debris, remove nozzle from J-Force and clean immediately.

8. **Remove nozzle from service if:**

- A. Nozzle is split or damaged;
- B. Nozzle sidewall is worn by more than 25% at any point;
- C. Nozzle's ability to hold pressure is questionable
- D. Threads are missing or damaged

## FLEXIBLE TUBE CLEANING LANCES

1. Read **General Safety** section and Nozzle Safety Warnings prior to connecting flex lances.

2. **Do not** use a flex lance with a burst rating less than 2.25 times the pressure at which it will operate. 10,000 psi operating pressure flex lances **must** have a **minimum** 22,000 psi burst rating. 8,000 psi operating pressure flex lances **must** have a **minimum** 18,000 psi burst rating.



3. **Do not** use a flex lance that has an unknown burst or unknown manufacturer's operating pressure rating.
4. **Never use a lance which is kinked, worn, frayed** or whose abilities to hold pressure is questionable.
5. **Do not** use a lance which has damaged or missing threads.
6. **Clearance** between lance and tube deposits **must be sufficient** to allow unrestricted backflow of water and debris. With tubes containing hard deposits this clearance should be 1/8" **minimum** on the diameter (or 1/16" per side) of the lance. With tubes containing soft, pliable deposits this clearance should be greater. **Insufficient side clearance may cause lance to blow back toward operator.**
7. **⚠ WARNING** Serious injury may occur should a lance with live nozzle exit tube. Use anti-withdrawal device to prevent lance from exiting tube unexpectedly.
8. The following **JETSTREAM** lance accessories are **strongly recommended** for safer lance operation:
  - A. **Lance Strain Relief** –Helps prevent lance inlet end fitting failure.
  - B. **Lance Stinger** - Affords the operator greater control of nozzle. Establishes a "safety zone" so operator knows when nozzle is about to exit tube; will eliminate possibility of nozzle and lance "double back" toward operator within large diameter pipe.
  - C. **Anti-withdrawal device** prevents the lance from exiting the tube or pipe. Contact JETSTREAM for additional information regarding these products.
9. **Use only nozzles designed for use with flex lances** (i.e. nozzle drilled with sufficient rearward orifices so nozzle pulls lance through tube.)
10. If lance end fittings do not have wrench flats, use properly adjusted smooth jaw plier wrench (JS PN 64119) to connect lance to pressure source and nozzle onto lance. Apply wrench on lance and fitting **directly behind end fitting thread (not on fitting ferrule or collar)** when installing nozzle on lance. Do not clamp on the lance hose itself with vise when installing nozzle.
11. Avoid rough handling, stretching or straining of lance.
12. Never attempt to "ramrod" flex lance through blockages or to repair or recouple lances.

13. After use, drain, coil and store lance properly. Be sure safety tags remain intact.

## **RIGID TUBE CLEANING LANCES**

- 1. Read General Safety** section and Nozzle Safety Warnings prior to connecting rigid lances.
2. Do not use a rigid lance with a burst rating less than 3.0 times the pressure at which it will operate. 10,000 psi operating pressure rigid lances must have a minimum 30,000 psi burst rating. Do not use a rigid lance that has an unknown burst or unknown manufacturer's operating pressure rating.
3. Clearance between lance and tube must be sufficient to permit the unrestricted backflow of water and debris. With tubes containing hard deposits this clearance should be 1/8" minimum on the diameter (or 1/16" per side) of the lance. With tubes containing soft, pliable deposits this clearance should be greater. Insufficient side clearance may cause lance to blow back toward operator.
4. Be sure nozzle, lance and adapter thread sizes are compatible before installing nozzle and adapter on lance. Do not use a rigid lance that has damaged or missing threads.
5. Use wrench flats (when available) or a properly adjusted smooth jaw plier wrench (JS PN 64119) to connect lance. Do not use pipe wrench as wrench marks will cause high pressure components to crack and fail.
6. A rigid lance over 4 ft long requires two men for support and safe operation. Operator at tube should use a foot control gun so he can instantly relieve system pressure in case of emergency.
7. When using and moving lance, support it in a manner to avoid stress and possible breakage at inlet end connection.
8. Never "ramrod" lance into tube blockage.
9. Transport and store lances in tubes or racks to avoid bending, corrosion or other damage. Damaged lances (bends, mars) should be removed from service.

## HIGH PRESSURE FITTINGS

1. **Read General Safety** section prior to installing fittings in system.
2. Use non-brass or non-cast iron fittings which are made for high pressure waterblast use.
3. Use only high pressure fittings which are clearly marked with the operating pressure.
4. High pressure fittings should have a known burst rating of not less than 3.0 times system operating pressure. Never use a damaged or corroded fitting or one with damaged or missing threads.
5. Use only high pressure rated fittings and hose in the waterblast system. For 10,000 psi waterblast service all fittings and hose should have a minimum burst rating of 25,000 psi; for 15,000 psi service they should have a minimum burst rating of 37,500 psi; for 20,000 psi service they should have a minimum burst rating of 50,000 psi.
6. Use wrench flats (when available) or a properly adjusted smooth jaw plier wrench (JS PN 64119) to tighten fittings. Avoid using pipe wrench as wrench marks will cause high pressure fittings to crack and fail.

## REPLACEMENT PARTS

1. **Read General Safety** section prior to repairing equipment and installing replacement parts.
2. Only trained persons should be authorized to perform maintenance or repairs to equipment.
3. Read and follow all manufacturer's repair instructions. All tool, torque, clearance and lubrication recommendations should be followed.
4. During replacement of any part, inspect mating part for wear and replace if necessary.
5. Do not attempt to install or use a part whose dimensions, clearances, function or use are suspect.
6. Test repaired equipment carefully and thoroughly before putting it into service. Do not put any piece of repaired equipment into service if its performance is questionable. If repaired equipment performance is questionable, call manufacturer of repair parts for assistance.

This section concludes all the same information included in the yellow JETSTREAM SAFETY WARNING pamphlet (PI-082).

## SECTION 2: PRODUCT DESCRIPTION

The 6" J-Force™ is a self-powered rotating nozzle that uses up to six JS4F or P4TC nozzles.

The 6" J-Force has many features, including:

- Spins on a film of high pressure water and has no ball bearings to replace. No oil or grease is needed for lubrication.
- Comes equipped with an eddy-current braking system which controls rotation speed for maximum cleaning power and minimum wear.
- Completely field repairable (in less than 5 minutes)
- 10° forward, 100° radial, 135° rearward nozzle angles
- Designed to easily navigate and clean 6" pipes with 90° bends.

**⚠ WARNING** This system contains several high-energy, rare-earth magnets that produce a magnetic field. Persons with a pacemaker or other electronic medical device must use extreme caution when handling or in close proximity. It is recommended that a minimum distance of 6 inches (152mm) be maintained at all times between the J-Force and any electronic medical devices.

**⚠ CAUTION** The use of gloves is recommended when handling the tool after operation as the body may reach temperatures greater than 200°F.

## Product Specifications

Model Name	JF6X15	JF6X22
Maximum Operating Pressure (psi)	15,000	22,000
Minimum Operating Pressure (psi)	2,500	
Maximum Flow (gpm)	60	
Maximum Operating Pressure (bar)	1000	1500
Minimum Operating Pressure (bar)	170	
Maximum Flow (l/min)	226	
Inlet Connection	1/2" NPT	9/16" MP or M24
Tube or Pipe I.D. (in)	6	
Tube or Pipe I.D. (mm)	152	
Speed Range (rpm)	800 - 1000	
Nozzle Types Accepted	JS4F, P4TC	
Nozzle Pattern	2 @ 10°, 2 @ 100°, 2 @ 135°	
Diameter (in)	3.75	
Length (in)	5.34	
Weight (lbs)	11	11
Diameter (mm)	95	
Length (mm)	136	
Weight (kg)	5	5

## **SECTION 3: PREPARATION FOR USE**

3.0 The 6" J-Force is mounted to a flexible rubber waterblast hose that allows it to navigate 6" pipes with bends up to 90°.

3.1 Before use, disassemble the 6" J-Force and inspect the mandrel and bushing for wear, damage, o-ring condition, etc. and repair or rebuild as necessary.

3.2 Clean the 6" J-Force by wiping internal components using a soft cloth and a water dispersing lubricant like WD-40.

3.3 See Flow Charts in Appendix C to choose nozzle configuration, flow rate, and desired operating pressure. The 6" J-Force is equipped with two forward-facing ports at 10°, two radial ports at 100°, and two rearward-facing ports at 135°. Choose the nozzle configuration based on the type of cleaning application and desired operating pressure and flow.

## SECTION 4: SETUP

### 4.0 CONNECTING 6" J-FORCE

Prior to installing the 6" J-Force onto the hose, flush the system to clear any debris.

#### **For 22,000 psi operation (9/16" MP AND M24)**

1. Apply anti-seize compound to the threads of the Type M connection.
2. Install the JF6X22 and tighten to 50 lb-ft.

#### **For 15,000 psi operation (1/2" NPT Female Inlet)**

1. Apply 3-4 wraps of Teflon thread sealant tape to the male NPT hose end.
2. Apply anti-seize compound over the sealant tape for protection against galling in connection threads.
3. Tighten the connection 1-1/2 to 2 turns past hand tight. All NPT pipe connections should have a minimum thread engagement of 4 threads.

4.1 Prior to installing nozzles in the 6" J-Force, turn on the pump and run at low pressure to flush debris from the system. Refer to nozzle charts in Appendix C to select the proper nozzle configuration for your application.

**NOTE:** Nozzle configurations must be carefully selected to ensure that they provide the necessary pull and torque. If a non-standard configuration is required, contact a Jetstream representative to verify that it is safe and that the tool will function properly.

4.2 An anti-withdrawal device (backout preventer) should be used to prevent the tool from accidentally exiting the pipe under high pressure. Hose restraints (whip checks) should be used at all high pressure hose connections including the fluid end discharge. See Appendix B for a list of backout preventers.

4.3 Contact Jetstream representative for assistance.

## SECTION 5: OPERATION

### 5.0 OPERATING J-FORCE

As per the WJTA-IMCA Recommended Practices, all operators shall follow the OSHA regulations for personal protective equipment. (OSHA guidelines for Personal Protective Equipment are available in document number 3151-12R 2004, which can be obtained from [www.osha.gov](http://www.osha.gov).) All operators shall be issued suitable head protection, eye protection, hearing protection, body protection, hand and foot protection and respiratory protection (if needed). For detailed specifications on all protections required, refer to the WJTA-IMCA 'Recommended Practices for the Use of High Pressure Waterjetting Equipment' Section 6, Protective Equipment For Personnel.

**⚠ CAUTION** The 6" J-Force can be used for minimum service temperature of -20°C (-4°F) and a maximum service temperature of 115°C (240°F). Use at lower or higher than recommended temperatures may result in premature o-ring seal failure.

5.1 Start by slowly increasing pressure to 500 psi and check the entire system, including all connections, for leaks. Increase pressure in increments, pausing at each to inspect system for leaks, proper rotation of tool, temperature, and other operational anomalies. If any problems are discovered, lower pressure back to zero and turn off source of power before making any adjustments.

5.2 During operation, it is normal for water to leak out of the front of the head from around the front nozzle (or front plug). This leak-by water comes from the water-bearing that the tool operates on.



# SECTION 6: SERVICE

## JF6X15 (PN 64915)

## JF6X22 (PN 65380 & 65381)

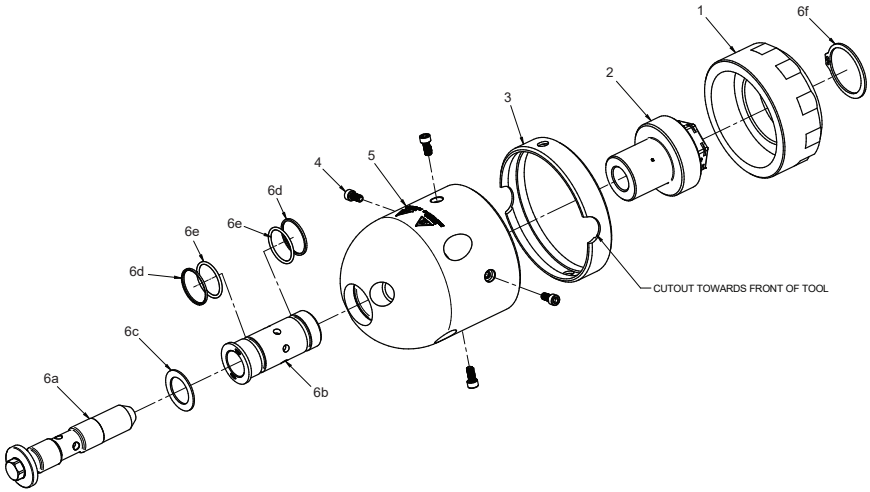


Figure A

6" J-Force Body Assembly			
Item	Qty	Part Number	Description
1	1	64827	ADJUSTER, BRAKE
2	1	64915	J-FORCE NOZZLE AY 1/2" NPT INLET NUT
		65380	J-FORCE NOZZLE AY 9/16" MP INLET NUT
		65381	J-FORCE NOZZLE AY M24 INLET NUT
3	1	64828	RING, WEAR
4	4	66220	SCREW, #8-32 X .25 316SS
5	1	65385	HEAD ASSEMBLY
6	1	65388	REBUILD KIT
6a	1	66347	MANDREL
6b	1	66137	BUSHING, FLANGE
6c	1	64823	BUSHING, THRUST
6d	2	66138	RING, SEAL SUPPORT
6e	2	26921	O-RING, 7/8 ID x 1/16
6f	1	64864	RING, RETAINING FOR 1-3/8 SHAFT

NOTE: Part numbers and descriptions are subject to change without notice.

## 6.0 6" J-FORCE MAINTENANCE

When not in use, the 6" J-Force should be cleaned to remove any debris, deposits, or contaminants that could impede rotation, and sprayed with water-dispersing lubricant (e.g. WD-40) for storage until next use.

The 6" J-Force utilizes water-bearing technology coupled with an eddy-current braking system to control the rotation speed. No oil is required, allowing for a quick and pain-free rebuild of the tool.

See YouTube for videos showing the 6" J-Force.

 **YouTube** <https://www.youtube.com/user/JetstreamWaterblast>

**⚠ CAUTION** The use of gloves is recommended when handling the tool after operation as the body may reach temperatures greater than 200:F.

### 6.1 DISASSEMBLY FOR MAINTENANCE

1. While holding the inlet nut (2) stationary in a vice or with a 1-1/4" wrench, unscrew the mandrel (6a) by turning it counterclockwise with a 1/2" socket wrench.
2. Once the mandrel is unthreaded from the inlet nut, the inlet nut and adjuster (1) will separate from the head assembly (5) as one piece. Once the magnets in the back of the head assembly are exposed, take care to protect them from mechanical damage. The magnets are fragile and will crack upon any significant impact.
3. Remove the mandrel (6a) and thrust bearing (6c) from the head assembly (5).
4. Remove the flange bushing (6b) from the head assembly (5) by pushing it out from the back side. The bushing removal tool (PN 66967) may be used to make contact with the back edge of the flange bushing to push it out, as shown below. Note orientation of tool.



## 6.2 ASSEMBLY

1. Ensure the new mandrel (6a), flange bushing (6b), and head assembly (5) are clean.
2. Install new o-rings (6e) and seal rings (6d) onto the flange bushing (6b). Apply a light coat of o-ring lube to o-rings to reduce friction and ease installation. See Figure B for proper orientation of o-rings when installed.

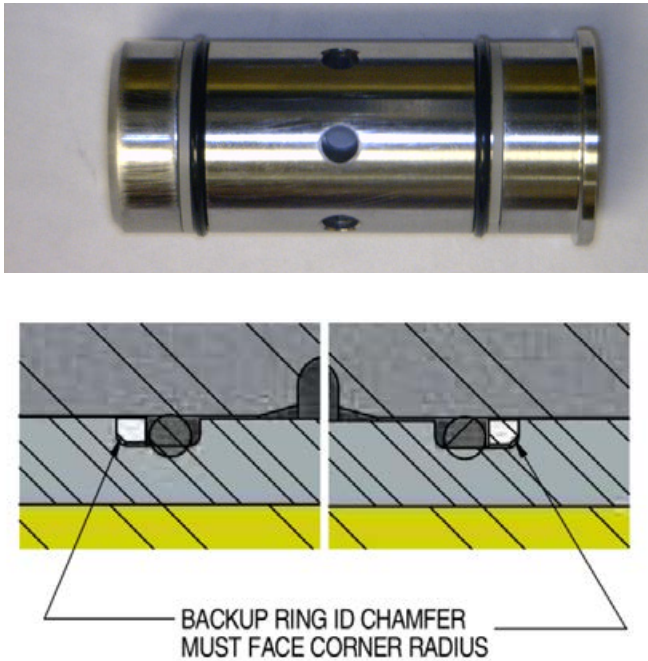


Figure B

3. Wet o-rings (6e) on the flange bushing (6b) very lightly with water or grease. Slide the flange bushing into the head assembly (5) from the front side.
4. If not already assembled, thread the adjuster (1) onto the inlet nut (2) until the inlet nut seats fully into the adjuster.
5. Apply blue loctite(#242) to the internal thread of the inlet nut.
6. Insert the assembled adjuster and inlet nut into the back of the head assembly. The adjuster (1) should slide in easily without binding between the OD of the magnet ring and ID of the groove in the head.

7. Insert the thrust bearing (6c) into the front bore of the head assembly (5) so that it sits flat against the flange of the flange bushing (6b).
8. Hold the inlet nut (2) hex stationary in a vice or with a 1-1/4" wrench and push the mandrel (6a) through the flange bushing (6b) into the inlet nut (2). Use a 1/2" socket to thread the mandrel into the inlet nut. Torque the mandrel to 30 lb-ft.
9. Slide the wear ring (3) onto the head assembly (5) with the nozzle installation clearance cutouts facing the front end of the head assembly. Attach the wear ring to the head assembly by rotating the wear ring so that the holes in the wear ring line up with the holes in the head assembly and threading the wear ring screws (4) into the head assembly. Apply Loctite 242 (Blue Medium-Strength Threadlocker) to the screw threads before installation.
10. If not already assembled, use retaining ring pliers to install the retaining ring (6f) into the groove closest to the adjuster (1) on the inlet nut (2)..

## SECTION 7: TROUBLESHOOTING

### 7.0 TROUBLESHOOTING

<b>Problem</b>	<b>Possible Cause</b>	<b>Remedy</b>
Will not spin	Nozzles worn, plugged, or wrong size	Replace nozzles
	O-ring / backup ring failure	Replace o-rings / backup rings
	Galling between mandrel and flange bushing	Replace damaged components (rebuild kit)
	Debris	Clean*
Spins slowly	Incorrect nozzle size or worn nozzles	Replace nozzles
	Debris	Clean*
Low pressure	Nozzles worn, plugged, or wrong size	Replace nozzles
	O-ring / backup ring failure	Replace o-rings / backup rings
	Connections not tight, leak	Find and repair leak
Low Pull	Nozzles worn, plugged, or wrong size	Replace Nozzles

\* \* To clean the J-Force follow 6.1 DISASSEMBLY FOR MAINTENANCE. If the mandrel and bushing surfaces are free from high spots and major scratches during inspection and cleaning, and the problem is not resolved, the parts must be replaced. Reassemble according to 6.2 ASSEMBLY.

# APPENDIX A

## Exploded Views

**JF6X15 (PN 64915)**

**JF6X22 (PN 65380 & 65381)**

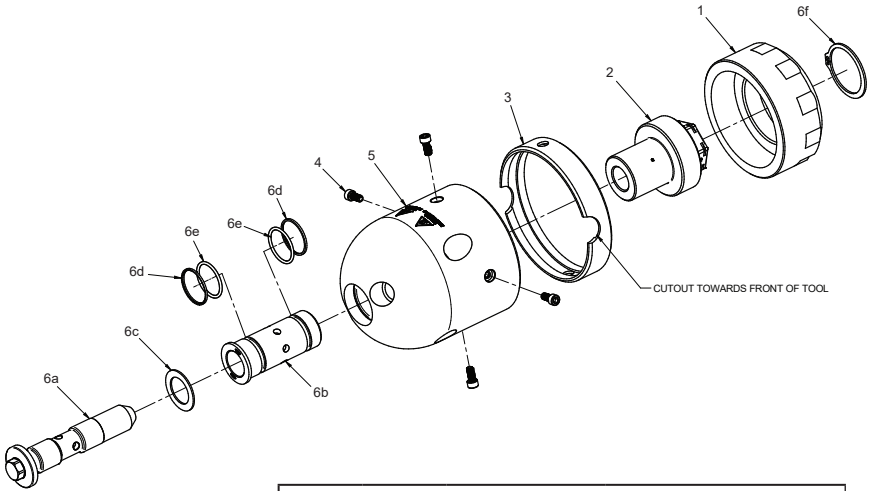


Figure C

6" J-Force Body Assembly			
Item	Qty	Part Number	Description
1	1	64827	ADJUSTER, BRAKE
2	1	66740	64915 J-FORCE NOZZLE AY 1/2" NPT INLET NUT
		66348	65380 J-FORCE NOZZLE AY 9/16" MP INLET NUT
		66741	65381 J-FORCE NOZZLE AY M24 INLET NUT
3	1	64828	RING, WEAR
4	4	66220	SCREW, #8-32 X .25 316SS
5	1	65385	HEAD ASSEMBLY
6	1	65388	REBUILD KIT
6a	1	66347	MANDREL
6b	1	66137	BUSHING, FLANGE
6c	1	64823	BUSHING, THRUST
6d	2	66138	RING, SEAL SUPPORT
6e	2	26921	O-RING, 7/8 ID x 1/16
6f	1	64864	RING, RETAINING FOR 1-3/8 SHAFT

NOTE: Part numbers and descriptions are subject to change without notice.

# Parts Placement

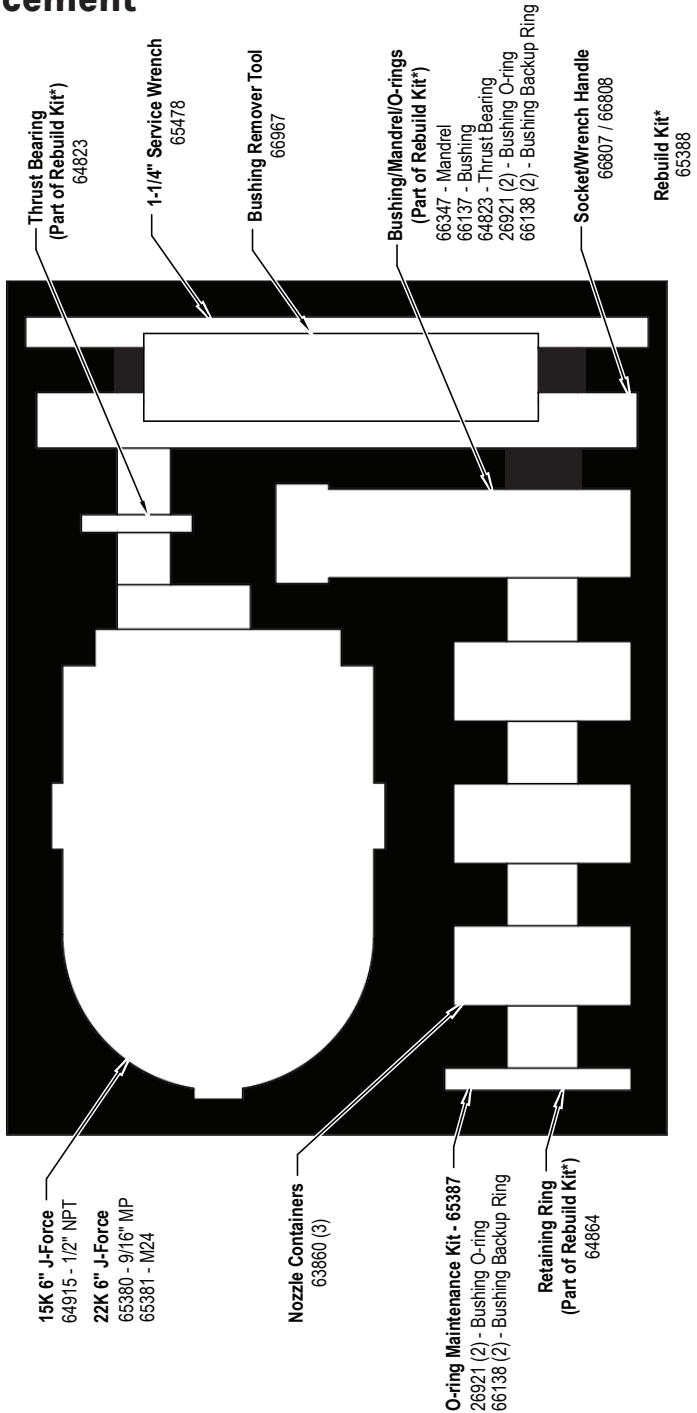


Figure D

KIT PN	TOOL PN	PSI	INLET CONNECTION	KIT TYPE
65479	64915	15K	1/2" NPT	STARTER
65480	64915	15K	1/2" NPT	PREMIUM
65481	65380	22K	9/16" MP	STARTER
65482	65380	22K	9/16" MP	PREMIUM
65483	65381	22K	M24	STARTER
65484	65381	22K	M24	PREMIUM

## APPENDIX B

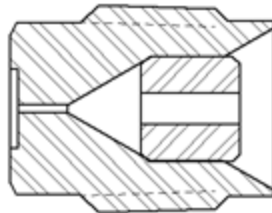
### Accessories

#### Bushing Removal Tool (PN 66967)



- Aids in bushing removal during rebuild

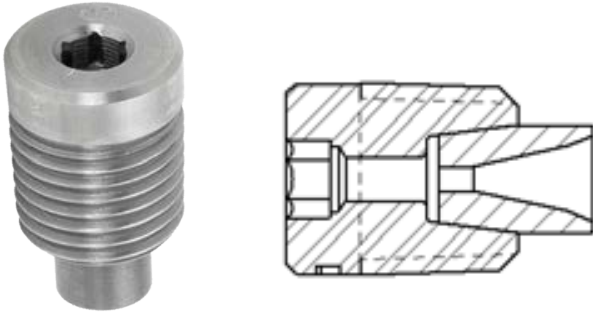
#### JS4F Nozzles



- Low profile design for unobstructed pipe cleaning
- Stainless steel
- Precision-drilled orifice
- Tapered geometry provides highly cohesive, distortion-free waterjets for concentrated, work saving cleaning and cutting power
- Straight (0°) pattern
- 1/4" NPT male connection



## P4TC Nozzles



- Low profile design for unobstructed pipe cleaning
- Tungsten carbide orifice inserts significantly outlast conventional nozzle orifice material
- Tapered geometry provides highly cohesive, distortion-free waterjets for concentrated, work savings cleaning and cutting power
- Straight (0°) pattern
- 1/4" NPT male connection

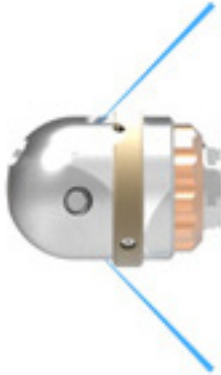
## Backout Preventer



- Prevents nozzle from exiting pipe
- 4" - 8" (100-200mm) pipes
- Includes clamp for securing backout preventer to pipe
- Diameter of nozzle must be at least 1-1/2" (38mm)
- Part number: JS-BJ310

# APPENDIX C

## Flow Charts



6" J-Force, Puller (Rear Jets)									
Flow (gpm)	2500 psi				5000 psi			7500 psi	
	Pull (lbf)	Nozzle Diameter (inches)		Pull (lbf)	Nozzle Diameter (inches)		Pull (lbf)	Nozzle Diameter (inches)	
		Front,Fwd x 2,Side x 2	Rear x 2		Front,Fwd x 2,Side x 2	Rear x 2		Front,Fwd x 2,Side x 2	Rear x 2
31								Plug	0.075
34				-81	Plug	0.090			
36				-87	Plug	0.093	-101	Plug	0.082
40				-97	Plug	0.098			
42							-122	Plug	0.090
46				-113	Plug	0.106			

6" J-Force, Puller (Rear Jets)									
Flow (gpm)	10000 psi				12500 psi			15000 psi	
	Pull (lbf)	Nozzle Diameter (inches)		Pull (lbf)	Nozzle Diameter (inches)		Pull (lbf)	Nozzle Diameter (inches)	
		Front,Fwd x 2,Side x 2	Rear x 2		Front,Fwd x 2,Side x 2	Rear x 2		Front,Fwd x 2,Side x 2	Rear x 2
24								Plug	0.052
25				-82	Plug	0.057			
27							-98	Plug	0.057
29	-90	Plug	0.067	-100	Plug	0.063			
31	-96	Plug	0.069						
32									
33				-113	Plug	0.067		Plug	0.063
34	-107	Plug	0.073	-120	Plug	0.069			
35	-113	Plug	0.075						

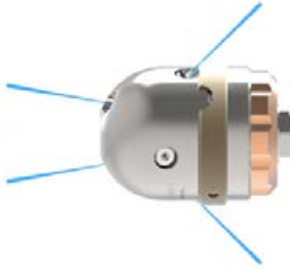
6" J-Force, Puller (Rear Jets)									
Flow (gpm)	17500 psi				20000 psi			22000 psi	
	Pull (lbf)	Nozzle Diameter (inches)		Pull (lbf)	Nozzle Diameter (inches)		Pull (lbf)	Nozzle Diameter (inches)	
		Front,Fwd x 2,Side x 2	Rear x 2		Front,Fwd x 2,Side x 2	Rear x 2		Front,Fwd x 2,Side x 2	Rear x 2
24									
25				-89	Plug	0.047			
26	-95	Plug	0.052				-98	Plug	0.047
27				-109	Plug	0.052			
28									
29	-114	Plug	0.057				-120	Plug	0.052



6" J-Force, Polisher (Forward Nozzles Plugged)									
Flow (gpm)	2500 psi			5000 psi			7500 psi		
	Pull (lbf)			Pull (lbf)			Pull (lbf)		
		Side x 2	Rear x 2		Side x 2	Rear x 2		Side x 2	Rear x 2
30							-45	0.057	0.047
31							-41	0.063	0.042
32							-59	0.052	0.057
33							-48	0.063	0.047
34							-35	0.073	0.032
35				-41	0.075	0.052	-70	0.052	0.063
36				-46	0.073	0.057	-41	0.073	0.038
37				-47	0.075	0.057	-51	0.069	0.047
38				-56	0.067	0.067	-57	0.067	0.052
39				-53	0.073	0.063	-58	0.069	0.052
40				-54	0.075	0.063	-66	0.067	0.057
41				-58	0.073	0.067	-75	0.063	0.063
42				-61	0.073	0.069	-61	0.073	0.052
43				-62	0.075	0.069	-62	0.075	0.052
44				-67	0.073	0.073	-76	0.067	0.063
45				-67	0.075	0.073	-77	0.069	0.063
46	-51	0.090	0.090	-70	0.075	0.075	-84	0.067	0.067
47	-41	0.106	0.073	-64	0.082	0.069	-85	0.069	0.067
48	-42	0.106	0.075	-32	0.106	0.022	-80	0.073	0.063
49	-54	0.093	0.093	-54	0.093	0.057	-89	0.069	0.069
50	-53	0.098	0.090	-51	0.098	0.052	-87	0.073	0.067
51	-48	0.106	0.082	-73	0.082	0.075	-92	0.073	0.069
52	-55	0.098	0.093	-61	0.093	0.063	-63	0.090	0.047
53	-45	0.115	0.075	-68	0.090	0.069	-93	0.075	0.069
54	-60	0.098	0.098	-66	0.093	0.067	-100	0.073	0.073
55	-39	0.125	0.063	-84	0.082	0.082			
56	-57	0.106	0.093	-77	0.090	0.075			
57	-43	0.125	0.069	-75	0.093	0.073			
58				-78	0.093	0.075			
59	-46	0.125	0.073	-60	0.106	0.057			
60	-48	0.125	0.075						

6" J-Force, Polisher (Forward Nozzles Plugged)									
Flow (gpm)	10000 psi			12500 psi			15000 psi		
	Pull (lbf)	Side x 2	Rear x 2	Pull (lbf)	Side x 2	Rear x 2	Pull (lbf)	Side x 2	Rear x 2
24							-31	0.047	0.022
25				-39	0.047	0.032	-54	0.038	0.038
26				-44	0.047	0.035	-42	0.047	0.029
27	-33	0.057	0.029	-38	0.052	0.029	-57	0.042	0.038
28	-37	0.057	0.032	-42	0.052	0.032	-37	0.052	0.024
29	-55	0.047	0.047	-47	0.052	0.035	-53	0.047	0.035
30	-45	0.057	0.038	-41	0.057	0.029	-60	0.047	0.038
31	-36	0.063	0.029	-46	0.057	0.032	-41	0.057	0.024
32	-52	0.057	0.042	-69	0.047	0.047	-70	0.047	0.042
33	-44	0.063	0.035	-39	0.063	0.024	-49	0.057	0.029
34	-68	0.052	0.052	-56	0.057	0.038	-55	0.057	0.032
35	-40	0.069	0.029	-72	0.052	0.047	-83	0.047	0.047
36	-55	0.063	0.042	-42	0.067	0.024	-47	0.063	0.024
37	-70	0.057	0.052	-55	0.063	0.035	-68	0.057	0.038
38	-64	0.063	0.047	-85	0.052	0.052	-55	0.063	0.029
39	-57	0.067	0.042	-53	0.067	0.032	-77	0.057	0.042
40	-81	0.057	0.057	-69	0.063	0.042	-66	0.063	0.035
41	-74	0.063	0.052	-64	0.067	0.038	-59	0.067	0.029
42	-52	0.075	0.035	-47	0.075	0.022			
43	-61	0.073	0.042	-66	0.069	0.038			
44	-85	0.063	0.057	-59	0.073	0.032			
45	-78	0.069	0.052						
46	-71	0.073	0.047						
47	-72	0.075	0.047						
48	-89	0.069	0.057						

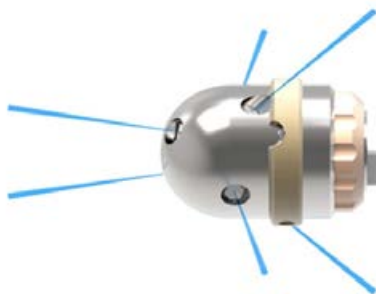
6" J-Force, Polisher (Forward Nozzles Plugged)									
Flow (gpm)	17500 psi			20000 psi			22000 psi		
	Pull (lbf)	Side x 2	Rear x 2	Pull (lbf)	Side x 2	Rear x 2	Pull (lbf)	Side x 2	Rear x 2
22				-37	0.024	0.038	-48	0.032	0.029
23	-36	0.024	0.042	-41	0.038	0.026	-37	0.038	0.022
24	-54	0.035	0.035	-53	0.035	0.032	-46	0.038	0.026
25	-45	0.042	0.029	-41	0.042	0.024	-59	0.035	0.032
26	-39	0.047	0.024	-55	0.038	0.032	-45	0.042	0.024
27	-63	0.038	0.038	-64	0.038	0.035	-61	0.038	0.032
28	-49	0.047	0.029	-59	0.042	0.032	-56	0.042	0.029
29	-66	0.042	0.038	-72	0.038	0.038	-45	0.047	0.022
30	-44	0.052	0.024	-67	0.042	0.035	-80	0.038	0.038
31	-62	0.047	0.035	-46	0.052	0.022	-73	0.042	0.035
32	-53	0.052	0.029	-50	0.052	0.024	-47	0.052	0.020
33	-59	0.052	0.032	-71	0.047	0.035	-83	0.042	0.038
34	-48	0.057	0.024	-60	0.052	0.029	-59	0.052	0.026
35	-81	0.047	0.042	-80	0.047	0.038	-78	0.047	0.035
36	-74	0.052	0.038	-55	0.057	0.024	-50	0.057	0.018
37	-64	0.057	0.032	-76	0.052	0.035			
38	-51	0.063	0.022						
39	-55	0.063	0.024						



6" J-Force, Unplugger (Side Nozzles Plugged)									
Flow (gpm)	2500 psi			5000 psi			7500 psi		
	Pull (lbf)	Fwd x 2	Rear x 2	Pull (lbf)	Fwd x 2	Rear x 2	Pull (lbf)	Fwd x 2	Rear x 2
37							-95	0.018	0.082
38							-91	0.022	0.082
39							-87	0.026	0.082
40							-84	0.029	0.082
41				-92	0.018	0.098	-38	0.047	0.075
42				-90	0.022	0.098	-71	0.038	0.082
43				-62	0.042	0.093	-28	0.052	0.075
44				-82	0.032	0.098	-113	0.020	0.090
45				-56	0.047	0.093	-108	0.026	0.090
46				-76	0.038	0.098	-55	0.047	0.082
47				-72	0.042	0.098	-120	0.022	0.093
48				-106	0.022	0.106	-96	0.035	0.090
49				-103	0.026	0.106	-92	0.038	0.090
50				-99	0.032	0.106	-85	0.042	0.090
51				-96	0.035	0.106	-33	0.057	0.082
52				-93	0.038	0.106	-76	0.047	0.090
53				-88	0.042	0.106	-127	0.029	0.098
54							-123	0.032	0.098
55				-82	0.047	0.106	-65	0.052	0.090

6" J-Force, Unplugger (Side Nozzles Plugged)									
Flow (gpm)	10000 psi			12500 psi			15000 psi		
	Pull (lbf)			Pull (lbf)			Pull (lbf)		
		Fwd x 2	Rear x 2		Fwd x 2	Rear x 2		Fwd x 2	Rear x 2
30									
31	-81	0.018	0.067	-88	0.018	0.063	-74	0.024	0.057
32	-74	0.024	0.067	-86	0.020	0.063	-30	0.035	0.052
33	-82	0.022	0.069	-80	0.024	0.063	-63	0.029	0.057
34	-77	0.026	0.069	-76	0.026	0.063	-55	0.032	0.057
35	-72	0.029	0.069	-99	0.020	0.067	-103	0.020	0.063
36	-67	0.032	0.069	-93	0.024	0.067	-96	0.024	0.063
37	-104	0.018	0.075	-103	0.022	0.069	-37	0.038	0.057
38	-84	0.029	0.073	-49	0.038	0.063	-119	0.020	0.067
39	-78	0.032	0.073	-90	0.029	0.069	-77	0.032	0.063
40	-46	0.042	0.069	-120	0.020	0.073	-127	0.020	0.069
41	-28	0.047	0.067	-114	0.024	0.073	-100	0.029	0.067
42	-79	0.035	0.075	-110	0.026	0.073	-115	0.026	0.069
43	-73	0.038	0.075	-51	0.042	0.067			
44	-122	0.022	0.082	-98	0.032	0.073	-46	0.042	0.063
45	-116	0.026	0.082	-91	0.035	0.073	-75	0.038	0.067
46	-112	0.029	0.082	-36	0.047	0.067			
47	-51	0.047	0.075				-27	0.047	0.063
48	-31	0.052	0.073	-72	0.042	0.073			
49	-95	0.038	0.082						
50	-37	0.052	0.075						
51	-86	0.042	0.082	-57	0.047	0.073			
52									
53	-73	0.047	0.082						

6" J-Force, Unplugger (Side Nozzles Plugged)									
Flow (gpm)	17500 psi			20000 psi			22000 psi		
	Pull (lbf)			Pull (lbf)			Pull (lbf)		
		Fwd x 2	Rear x 2		Fwd x 2	Rear x 2		Fwd x 2	Rear x 2
26				-71	0.018	0.047			
27				-66	0.020	0.047			
28	-79	0.018	0.052	-57	0.024	0.047	-73	0.020	0.047
29	-71	0.022	0.052	-51	0.026	0.047	-68	0.022	0.047
30	-67	0.024	0.052	-91	0.018	0.052	-56	0.026	0.047
31	-62	0.026	0.052	-82	0.022	0.052			
32	-98	0.018	0.057	-76	0.024	0.052	-95	0.020	0.052
33	-45	0.032	0.052	-71	0.026	0.052	-35	0.032	0.047
34	-86	0.024	0.057	-62	0.029	0.052	-78	0.026	0.052
35	-35	0.035	0.052	-108	0.020	0.057			
36	-73	0.029	0.057	-98	0.024	0.057	-124	0.018	0.057
37	-64	0.032	0.057	-40	0.035	0.052	-56	0.032	0.052
38	-116	0.022	0.063	-84	0.029	0.057			
39	-111	0.024	0.063	-28	0.038	0.052	-44	0.035	0.052
40	-44	0.038	0.057	-73	0.032	0.057			
41	-98	0.029	0.063	-62	0.035	0.057	-31	0.038	0.052
42	-89	0.032	0.063						
43				-50	0.038	0.057			
44									
45				-32	0.042	0.057			



6" J-Force, Universal									
Flow (gpm)	2500 psi			5000 psi			7500 psi		
	Pull (lbf)	Nozzle Diameter (inches)		Pull (lbf)	Nozzle Diameter (inches)		Pull (lbf)	Nozzle Diameter (inches)	
		Fwd x 2, Side x 2	Rear x 2		Fwd x 2, Side x 2	Rear x 2		Fwd x 2, Side x 2	Rear x 2
32							-62	0.024	0.069
33							-53	0.029	0.067
34							-39	0.035	0.063
35							-76	0.022	0.075
36							-54	0.032	0.069
37				-78	0.018	0.090	-66	0.029	0.073
38				-76	0.022	0.090	-51	0.035	0.069
39				-83	0.018	0.093	-43	0.038	0.067
40				-51	0.038	0.082	-47	0.038	0.069
41				-80	0.024	0.093	-91	0.024	0.082
42				-70	0.032	0.090	-64	0.035	0.075
43				-77	0.029	0.093	-41	0.042	0.069
44				-91	0.022	0.098	-60	0.038	0.075
45				-89	0.026	0.098	-117	0.018	0.090
46				-42	0.047	0.082	-115	0.020	0.090
47	-76	0.020	0.125	-87	0.029	0.098	-54	0.042	0.075
48	-75	0.026	0.125	-85	0.032	0.098	-125	0.018	0.093
49	-74	0.029	0.125	-109	0.018	0.106	-76	0.038	0.082
50	-73	0.032	0.125	-107	0.022	0.106	-108	0.029	0.090
51	-71	0.035	0.125	-80	0.038	0.098	-47	0.047	0.075
52	-70	0.038	0.125	-105	0.026	0.106	-71	0.042	0.082
53	-51	0.052	0.115	-61	0.047	0.093	-116	0.029	0.093
54	-68	0.042	0.125	-101	0.032	0.106	-112	0.032	0.093
55				-50	0.052	0.090			
56	-48	0.057	0.115	-99	0.035	0.106	-109	0.035	0.093
57	-31	0.067	0.106	-71	0.047	0.098			
58				-126	0.024	0.115	-105	0.038	0.093
59	-63	0.052	0.125	-125	0.026	0.115	-92	0.042	0.09
60	-44	0.063	0.115	-93	0.042	0.106			

6" J-Force, Universal									
Flow (gpm)	10000 psi			12500 psi			15000 psi		
	Pull (lbf)	Nozzle Diameter (inches)		Pull (lbf)	Nozzle Diameter (inches)		Pull (lbf)	Nozzle Diameter (inches)	
		Fwd x 2, Side x 2	Rear x 2		Fwd x 2, Side x 2	Rear x 2		Fwd x 2, Side x 2	Rear x 2
26							-53	0.020	0.047
27							-50	0.022	0.047
28				-54	0.022	0.052	-70	0.018	0.052
29				-72	0.018	0.057	-68	0.020	0.052
30	-72	0.018	0.063	-48	0.026	0.052	-65	0.022	0.052
31	-71	0.020	0.063	-68	0.022	0.057			
32	-69	0.022	0.063	-65	0.024	0.057	-87	0.018	0.057
33	-26	0.035	0.052	-62	0.026	0.057	-58	0.026	0.052
34	-88	0.018	0.069	-38	0.032	0.052	-31	0.032	0.047
35	-86	0.020	0.069	-57	0.029	0.057	-52	0.029	0.052
36	-85	0.022	0.069	-83	0.024	0.063	-75	0.026	0.057
37	-82	0.024	0.069	-101	0.020	0.067	-46	0.032	0.052
38	-98	0.020	0.073	-110	0.018	0.069	-106	0.020	0.063
39	-96	0.022	0.073	-108	0.020	0.069	-103	0.022	0.063
40	-67	0.032	0.067	-46	0.035	0.057	-39	0.035	0.052
41	-92	0.026	0.073	-103	0.024	0.069	-63	0.032	0.057
42	-46	0.038	0.063	-70	0.032	0.063	-119	0.022	0.067
43	-88	0.029	0.073	-89	0.029	0.067	-32	0.038	0.052
44	-94	0.029	0.075	-64	0.035	0.063	-127	0.022	0.069
45	-39	0.042	0.063	-83	0.032	0.067	-112	0.026	0.067
46	-62	0.038	0.069	-114	0.026	0.073	-84	0.032	0.063
47	-79	0.035	0.073	-58	0.038	0.063	-48	0.038	0.057
48	-50	0.042	0.067	-110	0.029	0.073			
49	-74	0.038	0.073	-84	0.035	0.069			
50	-116	0.029	0.082	-71	0.038	0.067			
51	-80	0.038	0.075	-49	0.042	0.063			
52	-112	0.032	0.082						
53	-39	0.047	0.067						
54	-72	0.042	0.075						
58	-28	0.052	0.067						

6" J-Force, Universal									
Flow (gpm)	17500 psi			20000 psi			22000 psi		
	Pull (lbf)	Nozzle Diameter (inches)		Pull (lbf)	Nozzle Diameter (inches)		Pull (lbf)	Nozzle Diameter (inches)	
		Fwd x 2, Side x 2	Rear x 2		Fwd x 2, Side x 2	Rear x 2		Fwd x 2, Side x 2	Rear x 2
24							-47	0.018	0.038
25				-56	0.018	0.042	-44	0.020	0.038
26	-43	0.022	0.042						
27	-65	0.018	0.047	-52	0.020	0.042	-62	0.018	0.042
28	-62	0.020	0.047	-27	0.026	0.038	-35	0.024	0.038
29	-58	0.022	0.047	-44	0.024	0.042	-53	0.022	0.042
30	-82	0.018	0.052	-70	0.020	0.047	-81	0.018	0.047
31	-28	0.029	0.042	-67	0.022	0.047	-77	0.020	0.047
32	-50	0.026	0.047				-44	0.026	0.042
33	-76	0.022	0.052	-94	0.018	0.052	-73	0.022	0.047
34	-72	0.024	0.052	-58	0.026	0.047	-103	0.018	0.052
35	-98	0.020	0.057	-86	0.022	0.052	-99	0.020	0.052
36				-82	0.024	0.052	-63	0.026	0.047
37	-36	0.032	0.047	-116	0.018	0.057	-95	0.022	0.052
38	-91	0.024	0.057	-78	0.026	0.052	-90	0.024	0.052
39	-87	0.026	0.057	-108	0.022	0.057	-85	0.026	0.052
40	-54	0.032	0.052	-70	0.029	0.052			
41	-124	0.020	0.063	-104	0.024	0.057	-46	0.032	0.047
42	-120	0.022	0.063						
43	-46	0.035	0.052	-62	0.032	0.052			
44	-73	0.032	0.057						
45									
46	-37	0.038	0.052						



This page intentionally left blank.

## WARRANTY

**Limited Warranty.** Each Waterblast Unit, Bareshaft Pump, and Fluid End manufactured by Jetstream is warranted against defects in material and workmanship for a period of 12 months or 1,000 hours, provided it is used in a normal and reasonable manner and in accordance with all operating instructions. If sold to an end user, the applicable warranty period commences from the date of delivery to the end user. If used for rental purposes, the applicable warranty period commences from the date of delivery to the party holding the equipment available for rent. This limited warranty may be enforced by any subsequent transferee during the warranty period. This limited warranty is the sole and exclusive warranty given by Jetstream.

**Exclusive Remedy.** Should any warranted product fail during the warranty period, Jetstream will cause to be repaired or replaced, as Jetstream may elect, any part or parts of such Waterblast Unit, Bareshaft Pump, or Fluid End that the examination discloses in Jetstream's sole judgment to be defective in material or factory workmanship. Repairs or replacements are to be made at Jetstream in Houston, Jetstream FS Solutions Rental Center, the customer's location, or at other locations approved by Jetstream. Labor is furnished only when the unit or part is returned to the factory or when travel and expenses are paid by the purchaser. Freight, travel and expenses incurred in connection with repair or warranty are excluded from this warranty and shall be paid by the purchaser. The foregoing remedies shall be the sole and exclusive remedies of any party making a valid warranty claim.

The Jetstream Limited Warranty shall NOT apply to (and Jetstream shall NOT be responsible for):

1. Major components or trade accessories that have a separate warranty from their original manufacturer, such as, but not limited to: diesel engines, electric motors, electronic soft starter and/or across the line starter panels, axles, PTO's, clutch packs, high pressure gauges, high pressure hoses, flex lances, etc.
2. Normal adjustments and maintenance services.
3. Normal wear parts such as, but not limited to: oil, clutches, belts, filters, packing, cartridges, univalves, face seals, diffusers, gland nut bushings, plungers, nozzles, rupture disks, etc.
4. Failures resulting from the machine being operated in a

manner or for a purpose not recommended by Jetstream including failures or malfunctions resulting from corrosion, misapplication, overpressurization, inadequate pump suction conditions, improper water quality, improper maintenance, or misuse.

5. Repairs, modifications or alterations which in Jetstream's sole judgment, have adversely affected the machine's stability, operation or reliability as originally designed and manufactured.

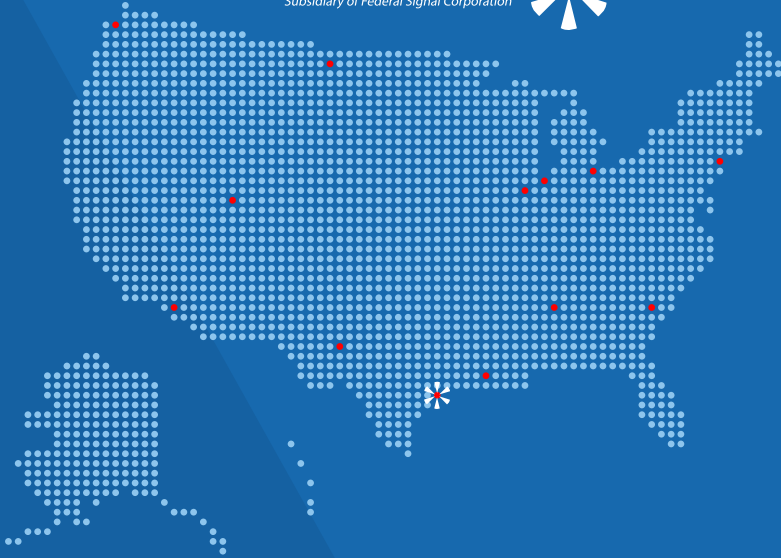
6. Items subject to misuse, negligence, accident or improper maintenance.

\*NOTE\* The use of any part other than ones approved by Jetstream may invalidate this warranty. Jetstream reserves the right to determine, in its sole discretion, if the use of non-approved parts invalidates the warranty. Nothing contained in this warranty shall make Jetstream liable for loss, injury, or damage of any kind to any person or entity resulting from any defect or failure in the machine or part.

THIS WARRANTY IS, AND SHALL BE IN LIEU OF ALL OTHER WARRANTIES, EXPRESS OR IMPLIED, INCLUDING WITHOUT LIMITATION, ANY IMPLIED WARRANTIES OF MERCHANTABILITY OR FITNESS FOR A PARTICULAR PURPOSE, ALL OF WHICH ARE DISCLAIMED. THIS DISCLAIMER AND EXCLUSION SHALL APPLY EVEN IF ANY WARRANTY POSSIBLY ASSERTED FAILS OF ITS ESSENTIAL PURPOSE.

This warranty is in lieu of all other obligations or liabilities, contractual and otherwise, on the part of Jetstream. For the avoidance of doubt, Jetstream shall not be liable for any indirect, special, incidental or consequential damages, including, but not limited to, loss of use or lost profits. Jetstream makes no representation that the unit has the capacity to perform any functions other than as contained in Jetstream's written literature, catalogs or specifications accompanying delivery of the machine. No person or affiliated company representative is authorized to alter the terms of this warranty, to give any other warranties or to assume any other liability on behalf of Jetstream in connection with the sale, servicing or repair of any machine manufactured by Jetstream. Any legal action based hereon must be commenced within eighteen (18) months of the event or facts giving rise to such action.

Jetstream reserves the right to make design changes or improvements in its products without imposing any obligation upon itself to change or improve previously manufactured products.



Jetstream products are also serviced by FS Solutions. With 13 convenient locations across the United States, FS Solutions provides high-performance parts, accessories, Jetstream rentals, repair, rebuild and safety training.



**FS Solutions™**

Gonzales, LA  
(225) 647-0660

Highland, IN  
(219) 924-3180

Lakewood, WA  
(253) 584-0653

Toledo, OH  
(888) 415-7368

LaPorte, TX  
(281) 674-8668

Streator, IL  
(815) 672-6028

Williston, ND  
(701) 572-7421

Lexington, SC  
(803) 996-0741

Leeds, AL  
(800) 822-8785

Long Beach, CA  
(866) 515-9891

New Brunswick, NJ  
(732) 448-7830

Midland, TX  
(432) 563-4450

Salt Lake City, UT  
(801) 808-4590

## **JETSTREAM OF HOUSTON**

5905 THOMAS ROAD  
HOUSTON, TEXAS 77041  
(832) 590-1300 or (800) 231-8192

[SALES@WATERBLAST.COM](mailto:SALES@WATERBLAST.COM) | [WATERBLAST.COM](http://WATERBLAST.COM)

### **Application Policy**

Capacity ratings, features, and specifications vary depending upon the model and type of service. Application approvals must be obtained from Jetstream; contact your representative for application approval. We reserve the right to change or modify our product specifications, configurations, or dimensions at any time without notice.