

FLEXSTOP™

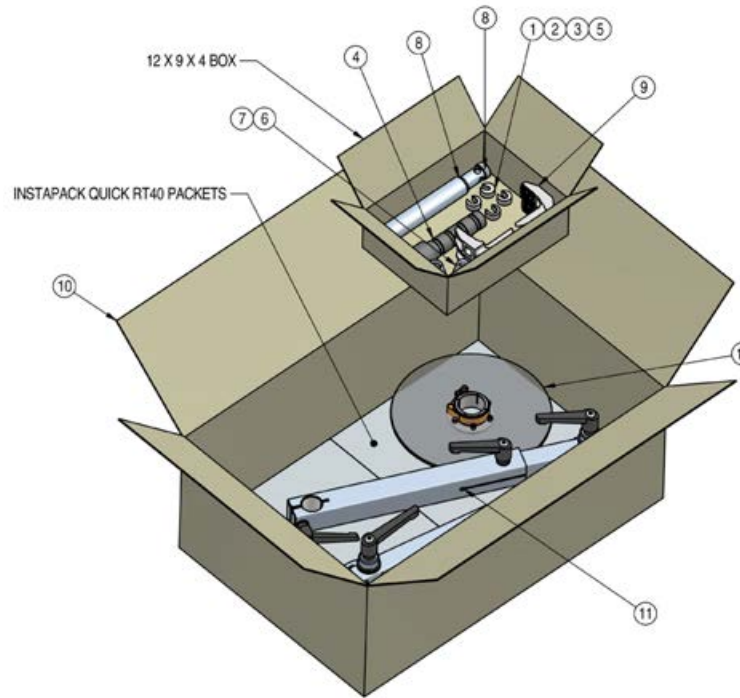
QUICK START GUIDE

QSG-194



The FlexStop Lance Safety Device protects the operator from a flex lance exiting a tube sheet during cleaning operations in either a horizontal or vertical application. Two friction disc hubs and a telescoping tube allow for a wide range of adjustment and positioning possibilities. Durable stainless steel construction with a Lexan splash guard.

FLEXSTOP™ | KIT LAYOUT (PN 61374)



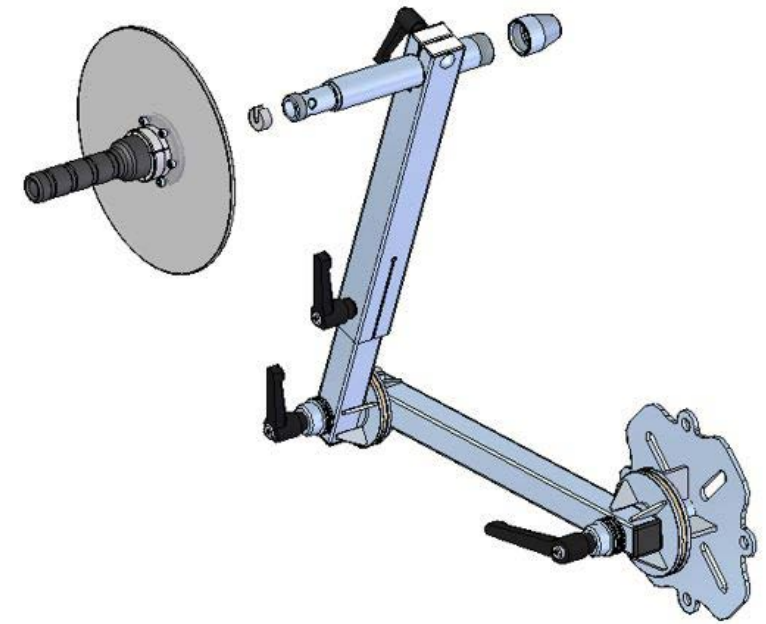
Item	Qty	PN	Description 1	Description 2
1	1	51036	Stop, Collar, Lance Safety Grip	For 50559, 51045, 26104
2	1	51038	Stop, For Lance Safety Grip	For 25568, 26106, 51592
3	1	51044	Stop, For Lance Safety Grip	For 25570 & 26108
4	1	51057	Handle Flex Lance Safety	Grip
5	1	51779	Stop, For Lance Safety Grip	For 25571 & 53816 Lance
6	1	60288	Nozzle Guide .550 ID	FlexStop
7	1	60289	Nozzle Guide .780 ID	FlexStop
8	1	60293	Extension Tube, 9"	FlexStop
9	2	61355	Flange Clamp, F9	5/8, w/Bolt, GALV
10	1	61365	Shipping Box, 30" X 20" X 12"	FlexStop
11	1	66288	FlexStop Articulated Arm	Telescopic Outer Arm, Metric
12	1	J55785	Shield AY, Safety Grip	12" Dia. Clear Shield

FLEXSTOP™ | MAINTENANCE

PN	ID	Description	Description 2	PN	ID	Description
51036	.325"	Flex Lance Stop	For 4/2 & 3/2 Hose	60288	.550"	Nozzle Guide Bushing
51038	.445"	Flex Lance Stop	For 5/2 Hose	60289	.780"	Nozzle Guide Bushing
51044	.510"	Flex Lance Stop	For 6/2 & 6/4 Hose			
51779	.610"	Flex Lance Stop	For 8/2 & 8/6 Hose			

To change the stop size to fit a specific flex lance O.D., unscrew the safety grip handle and splash guard from the extension tube. The stop fits down inside the safety grip. Remove and install the required size from the FlexStop kit in reverse order.

To change the guide bushing size, unscrew the current guide bushing from the extension tube. Select the smallest diameter guide from the FlexStop kit which allows the nozzle and lance to pass through freely. Screw onto extension tube.



FLEXSTOP™ | QUICK START GUIDE

⚠ DANGER

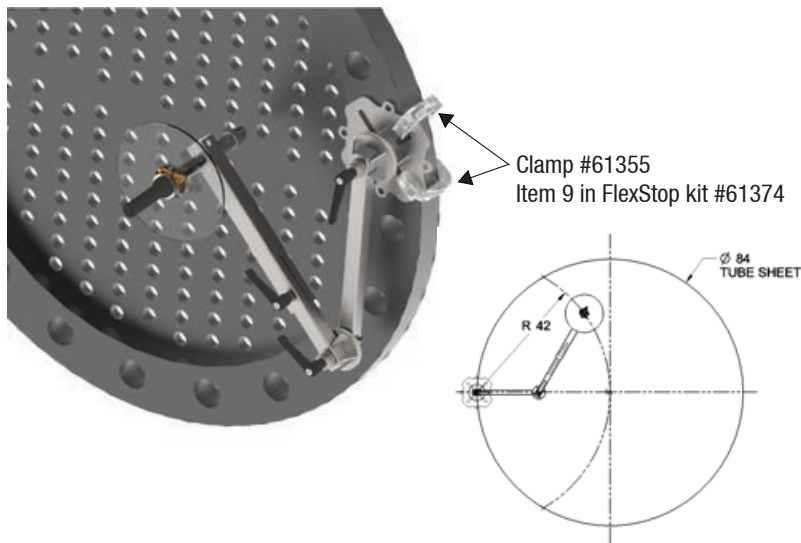
THIS PRODUCT CAN BE DANGEROUS IF NOT USED PROPERLY! Always wear appropriate Personal Protective Equipment (PPE). Detailed PPE information can be found at: www.fsessgsafety.com and clicking on the JETSTREAM name or by referring to the yellow JETSTREAM SAFETY WARNING pamphlet (PI-082).

This product is sold with the understanding that the purchaser agrees to thoroughly train all operators and maintenance personnel in the correct and safe installation, operation, and maintenance of the product and to provide adequate supervision of personnel at all times. JETSTREAM urges customers to make complete instructions available to all personnel and ensure they are read thoroughly before installing, connecting or using the FlexStop. Retain these instructions for future reference. If this product is resold or otherwise conveyed, the purchaser must pass on these instructions to the new user. If any questions remain, or to request additional copies, call JETSTREAM at (800) 231-8192 or (832) 590-1300.

Read the yellow JETSTREAM SAFETY WARNING pamphlet (PI-082) included with the shipment of the product.

CONNECTING PRODUCT NAME

Mount the baseplate of the FlexStop arm to a Tube Sheet with provided clamps as shown. Connection must be tight to support the arm in all its range of motion. Maximum horizontal reach (center of mounting plate to lance) is 51".

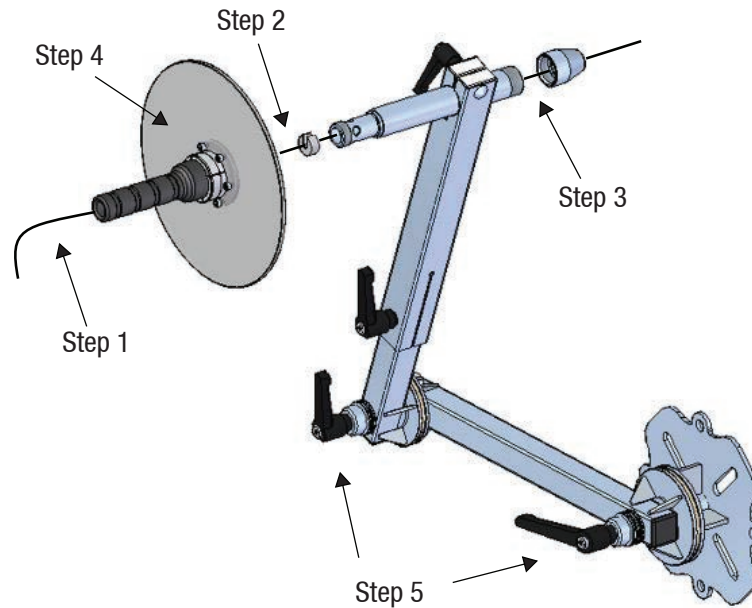


Maximum recommended reach for vertical mounting is 42"*
*Limited by friction lock supporting a typical lance

OPERATION

As per the WJTA-IMCA Recommended Practices, all operators shall follow the OSHA regulations for personal protective equipment. (OSHA guidelines for Personal Protective Equipment are available in document number 3151-12R 2004, which can be obtained from www.osha.gov.) All operators shall be issued suitable head protection, eye protection, hearing protection, body protection, hand and foot protection and respiratory protection (if needed). For detailed specifications on all protections required, refer to the WJTA-IMCA 'Recommended Practices for the Use of High Pressure Waterjetting Equipment' Section 6, Protective Equipment For Personnel.

1. With the arm mounted to the tube sheet, install required lance through the handle and lance guide tube.
2. Install the associated lance stop based on hose size between the handle and the lance guide tube per the Maintenance section.
3. Install the associated Nozzle guide bushing per the Maintenance section.
4. Verify the Safety Shield (J55785) is installed on the handle.
5. Position FlexStop arm in position of tube to be cleaned and tighten all four Adjustment Handles to lock in position.



⚠ WARNING

Failure to secure, connect, or operate the FlexStop as indicated could create a condition in which the FlexStop will not stop a lance from exiting the Sheet Bundle during cleaning operations.

QSG-194

⚠ DANGER

Failure to follow the following instructions will cause unsafe conditions, severe injury can result.

- NEVER stand in the plane of blasting.
- At high-pressure, the water can be hot. Wear gloves and use caution to prevent scalding.
- Place barricades with warning signs or barricade tape around work area. This includes the waterblast unit and all high-pressure hoses.
- Operator must be outfitted with proper safety apparel (refer to yellow JETSTREAM SAFETY WARNING pamphlet). Body armor is strongly recommended.

FOR FURTHER INFORMATION SEE:

 **YouTube** <https://www.youtube.com/user/JetstreamWaterblast>

and the

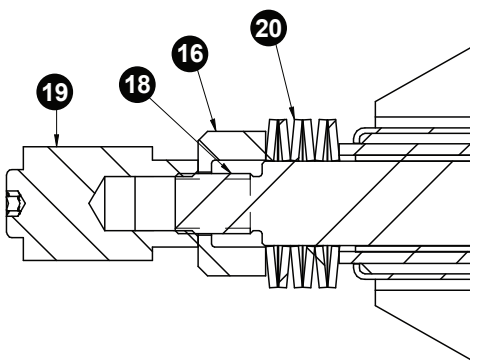
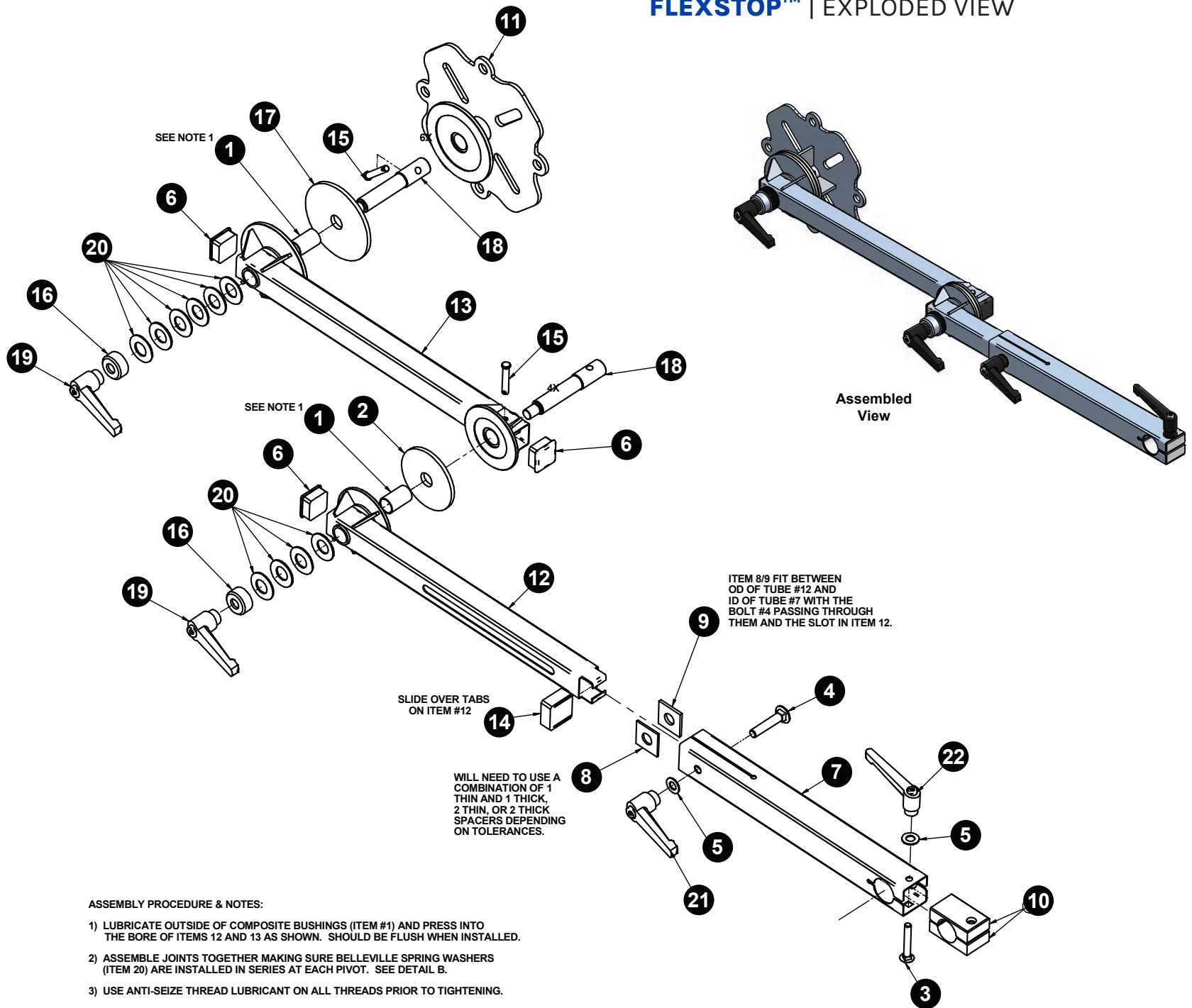
Jetstream Safety Manual



FLEXSTOP™ | PART BREAKDOWN

Item	Qty	PN	Description 1	Description 2
1	2	60311	Sleeve Bearing	FlexStop
2	1	60998	Friction Element, 4"	FlexStop
3	1	61046	Capscrew .38 C X 2.5	Carriage, SST
4	1	61050	Capscrew .5 C X2.5	Carriage, SST
5	2	61148	Washer, Thrust	.52 ID X .06 THK, PTFE Coated
6	3	66274	Square Finishing Plug	40MM X 1.5-2.0 Wall Black PE
7	1	66291	Outer Telescoping Arm	FlexStop, Metric
8	4	66293	Spacer, Telescoping Arm	Teflon, Thin, Metric
9	4	66294	Spacer, Telescoping Arm	Teflon, Thick, Metric
10	2	66296	Clamp Block	FlexStop, Metric
11	1	66297	Mounting Plate Weldment	FlexStop, Metric
12	1	66298	Outer Arm Weldment	FlexStop, Metric
13	1	66299	Inner Arm Weldment	FlexStop, Metric
14	1	66300	Centering Block	FlexStop, Metric
15	2	66302	Clevis Pin, 3/8 Dia. X 2.0" L	Hairpin Cotter included
16	2	66865	Friction Plate Plunger	FlexStop
17	1	66866	Friction Element, 5"	FlexStop
18	2	66867	Pivot Pin	FlexStop
19	2	66870	ADJ Handle, 5/8-11 UNC, FEM	Die Cast Zinc, Black, .25" Handle
20	10	66871	Belleville Disc Spring	0.880" ID, 1.75" OD, 0.0850" T
21	1	66889	ADJ Handle, 1/2-13 UNC, FEM	Die Cast Zinc, Black, 4.25" Handle
22	1	66890	ADJ Handle, 3/8-16 UNC, FEM	Die Cast Zinc, Black, 3.62" Handle

FLEXSTOP™ | EXPLODED VIEW



NOTE:
Disc spring arrangement for pivot hinges. Quantity of discs changes.

- ASSEMBLY PROCEDURE & NOTES:**
- 1) LUBRICATE OUTSIDE OF COMPOSITE BUSHINGS (ITEM #1) AND PRESS INTO THE BORE OF ITEMS 12 AND 13 AS SHOWN. SHOULD BE FLUSH WHEN INSTALLED.
 - 2) ASSEMBLE JOINTS TOGETHER MAKING SURE BELLEVILLE SPRING WASHERS (ITEM 20) ARE INSTALLED IN SERIES AT EACH PIVOT. SEE DETAIL B.
 - 3) USE ANTI-SEIZE THREAD LUBRICANT ON ALL THREADS PRIOR TO TIGHTENING.