

# High Visibility EN ISO 20471-2013 Class 3

## Flame Retardant outer material



*Closes in the back  
– full front protection!*



*Comfort details  
in the back.*



*Protection  
all around  
the leg!*



### JACKET WITH HAND PROTECTION

The Jacket provides effective full front protection as well as round the neck and shoulders. It also has integrated Hand Protection.

Ideally combined with Trousers and Gaiters or Boots 3000 for maximum protection. Weight 2.4 kg / 5.3 lbs. (Jacket 20/30, L/XL).

**Size** S/M, L/XL, 2XL/3XL.

### TROUSERS

The Trousers are fitted with full front protection up to the waist. The zips on the outside of the legs are protected by a sealing velcro flap. Wide, adjustable braces with stretch in the back. Elastic part in the rear waist and adjustable band in the sides for maximum comfort and perfect fit. Trousers are very popular among workers who move a lot, climb or crawl. Can be ordered with **optional ventilation**. Preferably used in combination with Waistcoat or Jacket, Hand Protections, Gaiters or Boots 3000.

Weight 2.4 kg / 5.3 lbs. (Trousers 20/30, L/XL).

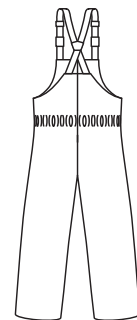
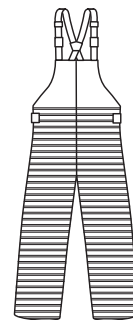
**Size** S/M, L/XL, 2XL/3XL.

### GAITERS

The Gaiters are to be worn outside of the user's regular protective boots. The entire area round the leg and the foot is protected. Three clips and velcro in the rear, and an easily adjustable strap under the sole, ensure that the Gaiters stay in place. Very comfortable and light to wear. Sold in pairs. Weight 1.0 kg / 2.2 lbs.

**One size.**

#### Protected areas striped



Front

Back

# Protection up to 3000 bar/43500 psi

## TECHNICAL DESCRIPTION

Outer material: Flame Retardant and certified for High Visibility. Inner material: Polyester mesh.

Protective material: Special fabric containing Dyneema® fiber. Seams: Taped.

Washing instructions: TST Special Grease Remover. CE-marking:

Approved according to the directive 89/686/EEC and EN ISO 20471:2013.



Dyneema® is a registered trademark of Royal DSM N.V.

## TEST RESULTS FOR CLOTHING

The different levels of protection have been determined by testing according to the table below.

Note! Different values (pressure, water flow, nozzle, distance, speed) can give significantly different results!

| Protection level | Pressure bar (psi) | Flow l/min (gpm) | Nozzles |               | RPM  | Distance mm (in.) | Linear Speed m/s (in./sec) | Result         |
|------------------|--------------------|------------------|---------|---------------|------|-------------------|----------------------------|----------------|
|                  |                    |                  | n       | Dia. mm (in.) |      |                   |                            |                |
| 10/28            | 1000 (15000)       | 19.8 (5.2)       | 1       | 1.0 (.039)    | –    | 75 (3)            | 0.5 (20)                   | No penetration |
| 10/28            | 2800 (40000)       | 18.8 (5.0)       | 2       | 0.6 (.024)    | 3000 | 75 (3)            | 0.5 (20)                   | No penetration |
| 20/30            | 2000 (30000)       | 17.9 (4.7)       | 1       | 0.8 (.031)    | –    | 75 (3)            | 0.5 (20)                   | No penetration |
| 20/30            | 3000 (43500)       | 19.5 (5.2)       | 2       | 0.6 (.024)    | 3000 | 75 (3)            | 0.5 (20)                   | No penetration |

| Sizes (men's)       |                      |                   |
|---------------------|----------------------|-------------------|
| Trousers and Jacket | Height cm (ft. in.)  | Chest cm (in.)    |
| S/M                 | <186 (<6'1")         | 85-100 (33"-39")  |
| L/XL                | 187-192 (6'2"-6'4")  | 108-116 (43"-46") |
| 2XL/3XL             | 193-206 (6'4"-6'9")  | 124-132 (49"-52") |
| Waistcoat           |                      |                   |
| M-2XL               | 176-196 (5'10"-6'5") | 85-124 (33"-49")  |
| 3XL                 | 196-206 (6'5"-6'9")  | 124-132 (49"-52") |
| Overall             |                      |                   |
| S                   | <175 (<5'9")         | 92 (36")          |
| M                   | 176-180 (5'9"-5'11") | 100 (39")         |
| L                   | 181-186 (5'11"-6'1") | 108 (43")         |
| XL                  | 187-192 (6'2"-6'4")  | 116 (46")         |
| 2XL                 | 193-200 (6'4"-6'7")  | 124 (49")         |
| 3XL                 | 201-206 (6'7"-6'9")  | 132 (52")         |

| Conversion table for shoe sizes |        |        |
|---------------------------------|--------|--------|
| EUR                             | US     | UK     |
| 42                              | 9      | 9      |
| 43                              | 9 1/2  | 9 1/2  |
| 44                              | 10     | 10     |
| 45                              | 10 1/2 | 10 1/2 |
| 46                              | 11     | 11     |
| 47                              | 12     | 12     |
| 48                              | 13     | 13     |



Certified according to ISO 9001:2008 and ISO 14001:2004



UNIQUE PROTECTION EQUIPMENT