



Jetstream[®]

Subsidiary of Federal Signal Corporation



TOTAL WATER BLASTING SOLUTIONS FOR
***SURFACE PREPARATION
AND COATINGS REMOVAL***

PERFORMANCE UNDER PRESSURE

That's what you get with everything we offer. Jetstream of Houston is a leading designer, manufacturer, and provider of innovative high-pressure waterblasting products and solutions for a wide range of applications, including industrial cleaning, surface preparation, hydrodemolition, and abrasive waterjet cutting. Since 1976, we have provided our customers with safe, sure, and simple solutions that get the job done.

THE UNx™ ADVANTAGE

Innovative designs, advanced manufacturing processes, and unique coating technologies create distinct Jetstream features that include easily replaceable valve cartridges and internal components, oil-less water bearings for rotating tools, and easily interchangeable fluid ends for pumps. With simple, yet rugged, construction and color-coded Visual Safety System markings, our products deliver exceptional performance, maximum safety and productivity, and minimal downtime on every job.

WHEN YOU NEED US, WE'LL BE THERE

Jetstream has the most comprehensive products, service, rental, and training in the industry. Whether you are looking to purchase or rent waterblasting equipment, or if you need service and support for your existing equipment, we've got you covered with the most experienced and customer-focused team in the industry. In the United States, our products are serviced by FS Solutions. With 13 convenient locations, FS Solutions provides high-performance parts and accessories, Jetstream rentals, repair and rebuild, and safety training services. Worldwide, our distribution network is there to handle your every need. Jetstream is a subsidiary of Federal Signal Corporation and has the financial strength, backing, and network of distributors around the world to support any customer.

POWER WITH A PURPOSE

High-pressure waterblasting is used in a wide variety of industrial applications:

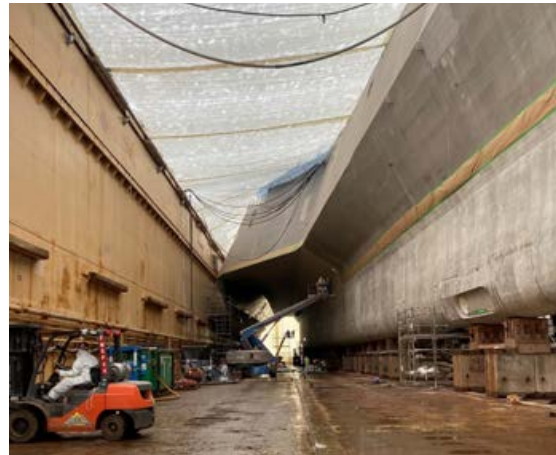
- SURFACE PREPARATION AND CLEANING
- TANK AND VESSEL CLEANING
- POOL PLASTER REMOVAL
- HYDRO-DEMOLITION
- HEAT EXCHANGER TUBE CLEANING
- HYDROSTATIC TESTING
- PIPE AND TUBE CLEANING
- WATERJET CUTTING

Pressures used typically range from 5,000 psi to 40,000 psi. Depending on the application and material needed to clean, water and waterblasting tools provide an excellent alternative to traditional blasting methods.

Maximize production, reduce operating costs, and increase profits on your next job with Jetstream's waterblasting equipment. We offer a full range of pumps, units, and accessories you need to safely, quickly, and efficiently get the job done.

BLASTING THE PROBLEM AWAY

THE QUICKEST, CLEANEST, AND MOST ENVIRONMENTALLY SAFE METHOD TO REMOVE SURFACE COATINGS AND PREPARE SURFACES

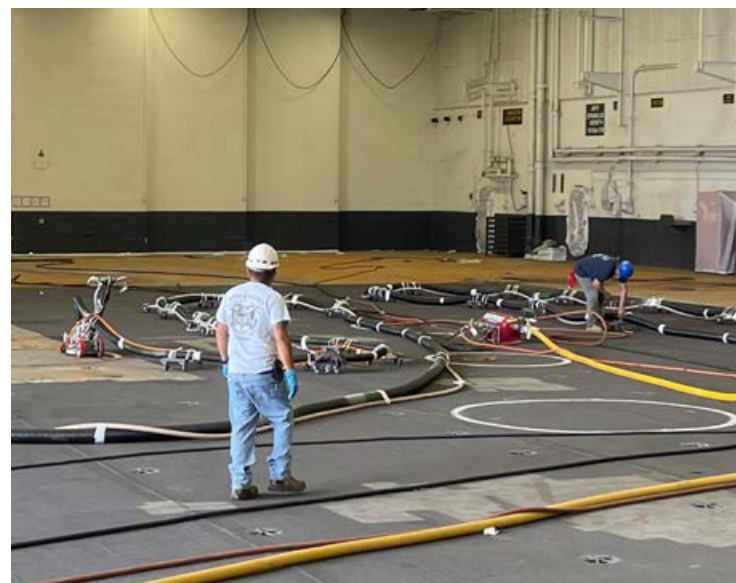


The conventional methods of sandblasting, chipping, or jackhammering to remove old surface coatings is an application of the past. These traditional methods of surface preparation are expensive, ineffective, and cause severe damage to the surface material.

Water blasting is proven to increase production, minimize disposal and new materials costs, and reduce the need for additional surface preparation steps before resurfacing. That's why more and more contractors are turning to Jetstream's advanced water blasting equipment and solutions for coating removal and resurfacing.

Water blasting uses up to 40,000 psi to efficiently remove various layers of deteriorated, delaminated, or old coatings for overlay work, without the hazards traditional methods offer. This method creates an ideal profile for the new coating to adhere to, offering a stronger bond that alternative surface prepping methods cannot provide.

Unlike traditional methods, water blasting does not cause structural damage to the surface. Over time, chipping can weaken the surface. Water blasting allows for various depths of removal, ranging from scarification of existing coatings to complete removal of the coating from the surface. Best of all, water blasting can be completed repeatedly without causing any damage to the surface beneath it.



YOUR PRODUCTIVITY. OUR MISSION.

HARNESS THE POWER OF WATER WHILE REALIZING THE BENEFITS JETSTREAM WATER BLASTING EQUIPMENT OFFERS.

Jetstream's water blasting solutions empower contractors to improve efficiency, reduce operating costs and increase their bottom-line. With over 45 years of experience, we are recognized as an industry-leading designer and manufacturer of water blasting equipment, relied on by contractors across North America for delivering exceptional performance, maximum safety and productivity, and minimal downtime on every job.

- INCREASE PRODUCTIVITY
- REMOVE VARIOUS LAYERS OF OLD COATINGS
- MINIMIZE DISPOSAL COSTS
- SAVE ON NEW COATING MATERIALS
- CREATE AN IDEAL SURFACE PROFILE FOR RESURFACING
- PRESERVE THE STRUCTURAL INTEGRITY OF THE SURFACE MATERIAL
- REDUCE LABOR COSTS AND MAN HOURS
- ELIMINATE AIRBORNE EMISSIONS AND DUST
- ENVIRONMENTALLY FRIENDLY



WATERBLAST UNITS



UNIT SPECIFICATIONS

IMPROVE EFFICIENCY OF ANY RENOVATION PROJECT

Jetstream provides long-lasting solutions for various surface preparation jobs. Whether it be for residential pools, large water parks, commercial or municipal renovations, or marine vessel rehabilitation; we offer everything you need to complete your job on time, under budget, and with superior surface preparation results.

SINGLE GUN OPERATION

X-SERIES WATERBLASTER	HP	PSI	GPM	AIR COMPRESSOR	TOOLS (PN 66938)
3040 PUMP (Nº. 7 PLUNGERS)	200	40,000	6.0	25 CFM @ 90 psi	FXG2 Tornado Gun*

*Tornado Gun package with Multi-Mode recommended

FEATURES: Air outlet near fluid end discharge



DUAL GUN OPERATION

X-SERIES WATERBLASTER	HP	PSI	GPM	AIR COMPRESSOR	TOOLS (PN 66938)
4240 PUMP (Nº. 8 PLUNGERS)	325	40,000	12.0	50 CFM @ 90 psi	(2) FXG2 Tornado Guns*

*Tornado Gun package with Multi-Mode recommended

FEATURES: Air outlet near fluid end discharge



HOW WORK GETS DONE

Jetstream water blasters are available in a wide selection of standard models with nearly limitless options for customization to suit specific needs. All Jetstream water blasters employ UNx™ Bareshaft Pump and Fluid End technology for superior performance, greater flexibility in the field, and reduced downtime and maintenance.

CUSTOM UNITS

In addition to our range of standard units and options, close collaboration between Jetstream solutions providers and engineers provide almost unlimited custom options to meet specialized needs. Common requests include:

- Custom trailers and skids
- Special control devices (pneumatic, electronic, hydraulic)
- Customizable to meet special requirements, Jetstream can build the perfect unit for any job

X-SERIES

The X-Series diesel waterblast system is ideal for cleaning and scarifying surfaces, removing old coatings, and any other application where pressure ranges of 5,000 to 40,000 psi (350 to 2,750 bar) are required. Available as a skid or trailer unit, the heavy-duty unit offers a host of features to provide contractors with enhanced performance, superior durability, and unsurpassed operating efficiency.

PERFORMANCE SPECIFICATIONS

- Maximum Power: 400 hp (298 kW)
- Maximum Operating Pressure: 40,000 psi (2758 bar)
- Minimum Operating Pressure: 5,000 psi (350 bar)

KEY BENEFITS

- 80 to 400 hp (59 to 298 kW) high performance diesel engines
- Pilot bearing free PTOs and covered banded belt drive
- Guardian™ Waterblast Filtration System extends component life and increases uptime with built-in filtration
- Available as a skid or low profile trailer with balanced weight distribution for stable towing
- State-of-the-art controls
- Electronic throttle control
- Hand-adjustable bypass valve
- Shutdown system to protect both the engine and the pump

OPTIONAL FEATURES

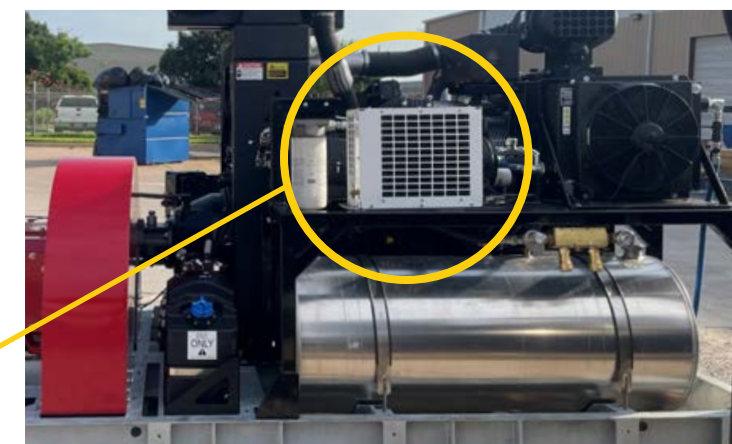
- Lightweight (<10,000 lbs) configuration
- Low profile (82") height
- Stationary skid
- 6,000 to 40,000 psi conversion kits
- Remote shutdown system
- Regulator valve for shut-in applications
- Electric or hydraulic brakes
- Gooseneck trailer
- Spare tire package
- Diamond-plate protective fender tops
- Workbench and industrial strength vise
- Forklift pads
- Powder-coated or polished aluminum wheels
- Packing lube water recirculation package
- Charge pump**
- Engine enclosure
- Air compressor package
- Safety package w/fire extinguisher and grounding cable
- Fuel saving Hydro-Throttle
- Special application units (i.e. oil field test pumps and hot water units)

X SERIES



AIR COMPRESSOR CONFIGURATION

Designed with optimum functionality and ease of serviceability in mind, customers can utilize Jetstream's fully integrated air compressor system to save cost, weight, and space compared to a stand-alone compressor unit. The air compressor system can be retrofit to all existing units and is available in a wide range of CFMs to meet your unique application needs.



50 CFM VMAC
AIR COMPRESSOR

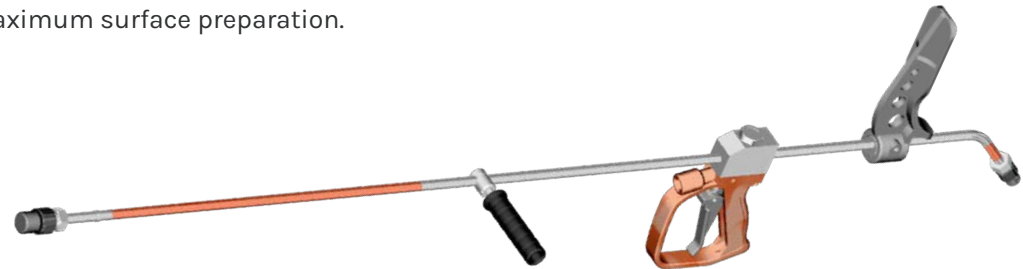
TOOLS AND ACCESSORIES

EVERYTHING YOU NEED TO SUCCEED

Jetstream is proud to be your one-stop shop for all your water blasting solutions. From nozzles to control guns, parts, and accessories, we have all the water blasting tools for your next resurfacing project.

DURASAFE™ DUMP GUN

DuraSafe hand-operated dump style control guns allow the operator to have complete control of the pressure at all times. Designed with safety, comfort, and simplicity in mind, they are used for a variety of surface cleaning applications and are available in four standard configurations. Combine the dump gun with the MagJet rotating nozzle for maximum surface preparation.



KEY FEATURES:

- 30-second field replaceable cartridge design for minimal downtime
- 48" distance from primary trigger to end of barrel to ensure maximum operator safety
- Operating pressures of up to 40,000 psi
- Equipped with holder for single nozzle.
- Ideal for use with self-rotating nozzles.

MAG-JET™ X40

The Jetstream MagJetX40 is a rugged, self-powered, rotating tool utilizing up to four straight-pattern, hard-hitting, replaceable sapphire nozzles, rated up to 43,500 psi, making it ideal for eliminating rust, old coatings, product residue or even damaged concrete prior to re-pouring. The tool rotates in a 360° pattern to provide maximum surface coverage and superior cleaning.



KEY FEATURES:

- Rated up to 43,500 psi
- Multiple head assemblies are available so that the desired rotation speed can be maintained across a wide range of flow rates
- Rebuild kit allows for minute complete overhaul of wear components right in the field

HYDRO-MOWER

The Jetstream Hydro-Mower efficiently scarifies concrete and asphalt. The self-powered rotation and drive provide consistent and effective operation from 15,000 psi (1034 bar) to 40,000 psi (2750 bar). It has a minimum 14-inch (350 mm) cleaning path with an 8 nozzle jet head.



KEY FEATURES:

- Lightweight, easy-to-transport tool that easily connects to any 40,000 psi (2750 bar) pump
- Capable of cleaning 500 - 1,500 square feet/hr (46.5 - 139.4 square meters/hr) with simultaneous vacuum recovery (requires 800 cfm)
- Supports blasting widths from 6" (15.2 cm) to 14" (35.5 cm)

FXG2 TORNADO GUN

The Jetstream FXG2 Tornado gun provides the maximum level of productivity and safety in high-pressure applications up to 40,000 psi (2757 bar). The air-powered rotation of the barrel allows the nozzle to spin to maintain maximum cleaning power for prepping concrete and other large surfaces for re-facing. Other applications include pool plaster removal, paint booth cleaning, stripe removal, tank cleaning, and coatings removal.

KEY FEATURES:

- Four FX nozzle head options available for fine tuning the blast for various applications
- UHPxD tetraCORE™ diamond nozzles provide up to 10 times longer life than sapphire nozzles
- The barrel is supported with three greaseless bushings for smoother running without maintenance



BARREL LENGTH		WEIGHT		INLET CONNECTION*	NOZZLE HEAD CONNECTION	ROTATIONAL SPEED	AIR REQUIREMENTS				MAX. FLOW		MAX. OPERATING PRESSURE	
IN	MM	LBS	KG				MIN. INLET PRESSURE	MIN. AIR CONSUMPTION	CFM	L/S	GPM	LPM	PSI	BAR
48.0	1219	13.8	6.3	9/16" Type M	9/16" Button Seal	1500-2500	90	6.2	20	9.4	7	26.5	40,000	2,758
36.0	914	13.0	5.9											

WATER BLASTING PROTECTION

ADVANCED PROTECTIVE EQUIPMENT FOR WATERJETTING

Jetstream understands the importance of conducting a safe environment when working in any high pressure waterblasting application. From personal protective equipment (PPE) to caution tape and signage, Jetstream provides a complete line of safety products to ensure a well protected jobsite and operator safety.



SAVING LIVES

TST® WATERJET PROTECTION

Jetstream is a proud distributor of TST Sweden, a leading manufacture of protective clothing for water blasting up to 43,500 psi. Their products are made with lightweight and flexible Dyneema® – the world's strongest fiber – for maximum protection without compromising comfort and quality. TST products range includes the popular Gamma kit, Delta Kit, Sigma kit as well as Jacket, Trousers, Apron, Hand Protections, Gaiters, Shroud, and Curtain.



TST JACKET

The TST Jacket with Hand Protection provides full chest protection as well as areas around the neck and shoulders. Ideally combined with Trousers and Gaiters for maximum protection.

- Includes integrated Hand Protection
- Optional regulated ventilation
- Proven protection up to 43,500 psi



TST TROUSERS 20/30

The Trousers are fitted with full front protection up to the waist. The zips on the outside of the legs are protected by a sealing flap and a hook & loops flap. Wide, adjustable braces in stretch material. Elastic part in the rear waist and a belt which helps to distribute weight and improves the comfort.

- Available with Ventilation
- Proven protection up to 43,500 psi

SAFETY ACCESSORIES



GAITORS 20/30

The Gaiters are to be worn outside of the operators regular protective boots. The entire area round the leg and the foot is protected. Three clips and hooks and loops in the rear, and an easily adjustable strap under the sole, ensures that the Gaiters stay in place.

- Come only in 20/30 protection level
- Made of either aluminum or Dyneema

SONETICS® APEX WIRELESS HEADSET

Sonetics APEX wireless headsets connects you to team members in full-duplex conversation, just like a conference call. No delays, no buttons to push and no clipping or interference.

- Multi-channel capability lets multiple teams operate simultaneously in the same work area
- Noise cancelling and auto-leveling microphones ensure you are heard clearly as you move from low- to high-noise areas
- Stereo Listen-Through situational awareness lets you hear your surroundings and have face-to-face conversations while protected from dangerous noise levels
- Sonetics® Charging Case available for 5-Users or 10-Users



RENTALS

WATER BLASTING EQUIPMENT THAT'S EASY TO USE, CONVERT, AND RENT

Renting is the most cost-effective way to acquire a piece of equipment without incurring all the hidden costs that are attached to a purchase of equipment. Renting also allows you to “try before you buy,” and we offer a rent-to-own program that allows you to apply a portion of the water blast rental fees to your down payment. The bottom line is – if we have it, we rent it.

You can pick up the tools and equipment you need, or we can deliver it right to your jobsite. Our rentals are ready to work the second they arrive at your job site and are backed up by our world-class customer support team and highly trained technicians who are committed to the success of your project.

Even more important, whether you simply rent or rent-to-own your water blasting equipment, our highly trained staff will go over each rental with you, taking you through the ins and outs of water blast operation, and making sure you understand safe water blasting practices. They're available 24/7 to answer questions, help plan the most efficient setup for a water blasting job, or to repair equipment.

You can also supplement your rental with additional water blast safety and skills training from our certified trainers.

<https://www.waterblast.com/rentals>

SERVICE AND SUPPORT TAILORED TO YOU

If you need service and support for your equipment, Jetstream has you covered with the most experienced and customer-focused team in the industry.

In the United States, our products are serviced by FS Solutions. With 13 convenient locations, FS Solutions provides high-performance parts and accessories, Jetstream rentals, repair and rebuild, and safety training services. In Canada, Joe Johnson Equipment (JJE) is there to handle your every need.

Whatever your needs may be, Jetstream offers a full range of products, services, and customized solutions designed to keep your products and projects running smoothly, effectively, and efficiently!

REFURBISHMENT PROGRAM

The Refurbishment Program increases the life of your water blasting system and improves performance by restoring worn equipment to a like-new condition.

TRADE-IN PROGRAM

The Trade-In Program provides customers an opportunity to have their old or current water blasting units traded in at a fair market value and applied towards the purchase of a new Jetstream water blaster.

BUY BACK PROGRAM

We pay you to sell back qualified equipment or help you replace that equipment with newer, cost-effective solutions.

TRAINING

To ensure customer satisfaction, Jetstream has developed the Right Start program, a four-step plan designed to provide the owners and operators of new Jetstream waterblast units with the knowledge and support needed to feel familiar, confident, and satisfied with Jetstream equipment and personnel.

TRANSPORTATION

Once a new water blaster is built and thoroughly tested, the Shipping Manager contacts the new owner to arrange for the unit's arrival to the right place at the right time.

TRAINING

All new water blasters include personal training by a Jetstream Technician. Training involves both classroom and “hands-on” instruction to make sure that each operator is thoroughly familiar with the design and function of the unit and accessories, enabling him to safely put the new equipment to optimal use.

FOLLOW-UP

Within 30 days of delivery, and again within 60 days, the Solutions Provider will call to answer any questions and ensure complete satisfaction.

TRUST

If any questions or problems ever arise, the Jetstream team is available and committed to providing prompt answers and solutions.

PREPARING YOU TO SUCCEED

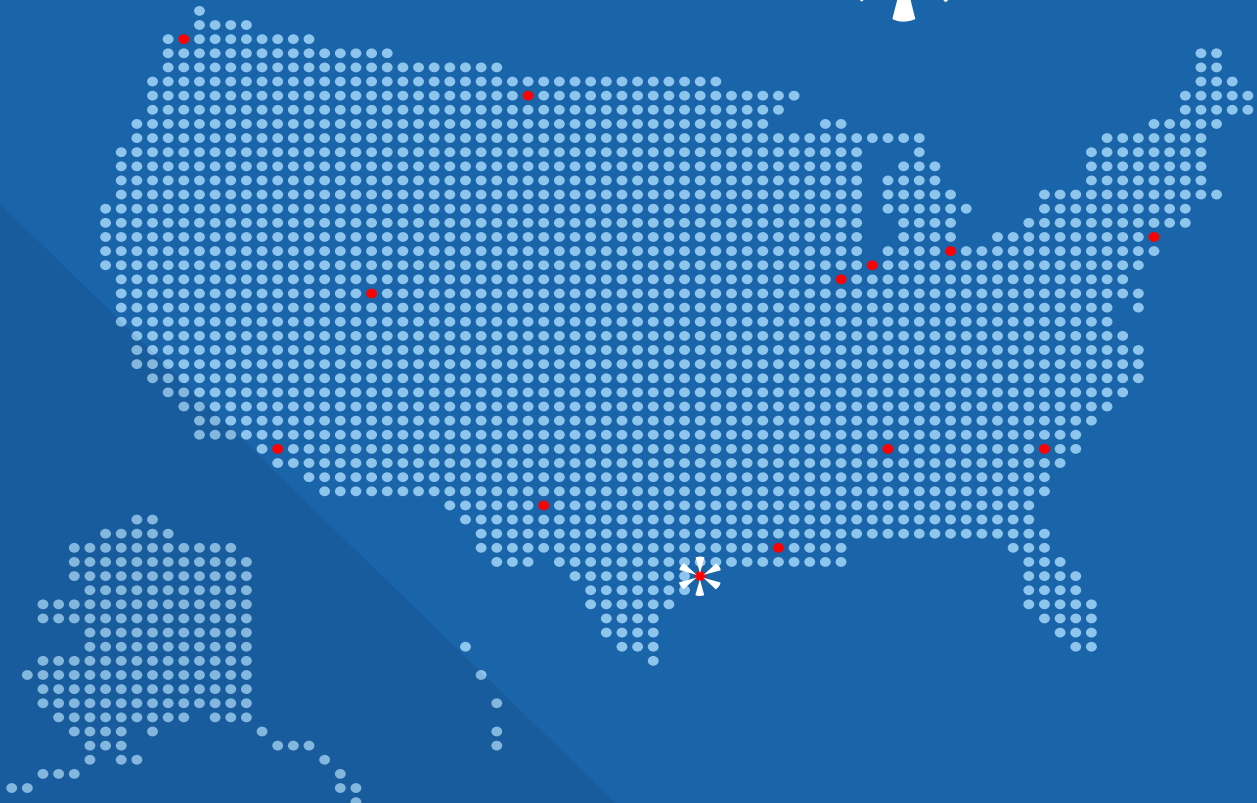
Jetstream provides a wide range of training courses

PUMP OPERATION & MAINTENANCE: The course combines extensive hands-on training with classroom instruction and is recommended for maintenance personnel, operators, and supervisors.

FS SOLUTIONS SAFETY TRAINING: As the experts on waterblast and industrial vacuum equipment, FS Solutions makes OSHA training and compliance more convenient than ever through hands on courses developed by Gary Toothe, whose significant contributions and 25 years of experience are well-known in the waterblast and industrial vacuum industries.

ONLINE WITH FEDERAL SIGNAL ESG UNIVERSITY: FS Solutions offers interactive courses through our Federal Signal Environmental Solutions Group University on subjects ranging from operator skill and safety to advanced classes for supervisors and managers in water blasting and industrial vacuum technologies.





Streator, IL
(815) 672-6028

La Porte, TX
(281) 674-8668

Toledo, OH
(888) 415-7368

Gonzales, LA
(225) 647-0660

New Brunswick, NJ
(732) 448-7830

Midland, TX
(432) 563-4450

Highland, IN
(219) 924-3180

Salt Lake City, UT
(801) 808-4590

Lexington, SC
(803) 996-0741

Long Beach, CA
(866) 515-9891

Leeds, AL
(800) 822-8785

Lakewood, WA
(253) 584-0653

Williston, ND
(701) 572-7421

Jetstream has the most comprehensive products, service, rental, and training in the industry. Whether you are looking to purchase or rent water blasting equipment, or if you need service and support for your existing equipment, we've got you covered with the most experienced and customer-focused team in the industry.

In the United States, our products are serviced by FS Solutions. With 13 convenient locations, FS Solutions provides high-performance parts and accessories, Jetstream rentals, repair and rebuild, and safety training services. In Canada, Joe Johnson Equipment (JJE) is there to handle your every need.

Jetstream is a subsidiary of Federal Signal Corporation and has the financial strength, backing, and network of distributors around the world to support any customer.

JETSTREAM OF HOUSTON

5905 THOMAS ROAD
HOUSTON, TEXAS 77041

(832) 590-1300

(800) 231-8192

P/N 69218

© 2022 Jetstream of Houston, LLC. All rights reserved.

 **Solutions**

