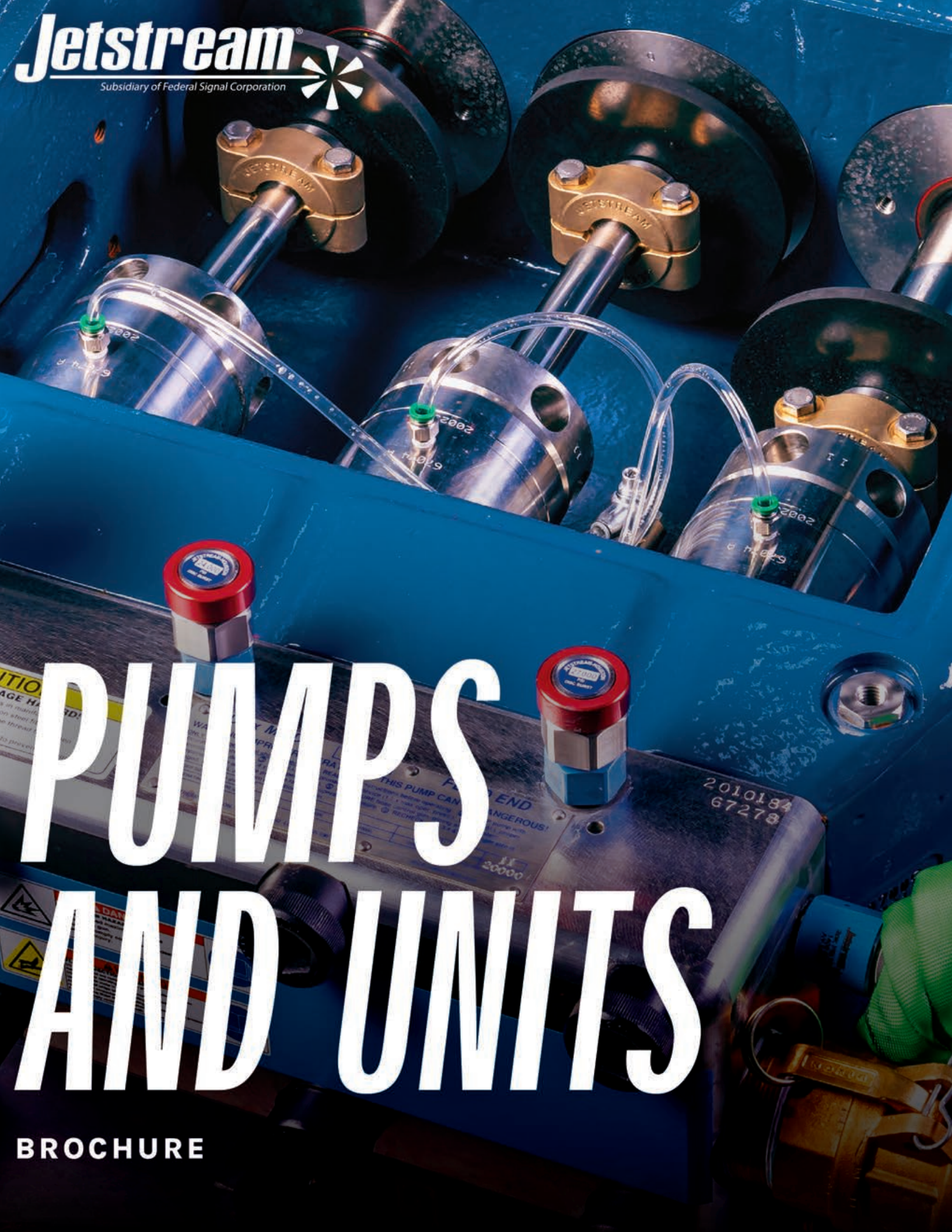


PUMPS AND UNITS

BROCHURE



PERFORMANCE UNDER PRESSURE

A large, industrial-grade high-pressure waterblasting machine is mounted on a silver metal trailer. The machine is primarily black with yellow accents, including a yellow tank and a yellow hose reel. The brand name "Jetstream" is visible in yellow on the black side panel. The machine is parked on a dirt or gravel surface at an industrial or construction site, with scaffolding and other structures visible in the background under a clear sky.

That's what you get with everything we offer. Jetstream of Houston is a leading designer, manufacturer, and provider of innovative high-pressure waterblasting products and solutions for a wide range of applications, including industrial cleaning, surface preparation, hydrodemolition, and abrasive waterjet cutting. Since 1976, we have provided our customers with safe, sure, and simple solutions that get the job done.

THE UNx™ ADVANTAGE

Innovative designs, advanced manufacturing processes, and unique coating technologies create distinct Jetstream features that include easily replaceable valve cartridges and internal components, oil-less water bearings for rotating tools, and easily interchangeable fluid ends for pumps. With simple, yet rugged, construction and color-coded Visual Safety System markings, our products deliver exceptional performance, maximum safety and productivity, and minimal downtime on every job.

WHEN YOU NEED US, WE'LL BE THERE

Jetstream has the most comprehensive products, service, rental, and training in the industry. Whether you are looking to purchase or rent waterblasting equipment, or if you need service and support for your existing equipment, we've got you covered with the most experienced and customer-focused team in the industry. In the United States, our products are serviced by FS Solutions. With 13 convenient locations, FS Solutions provides high-performance parts and accessories, Jetstream rentals, repair and rebuild, and safety training services. Worldwide, our distribution network is there to handle your every need. Jetstream is a subsidiary of Federal Signal Corporation and has the financial strength, backing, and network of distributors around the world to support any customer.



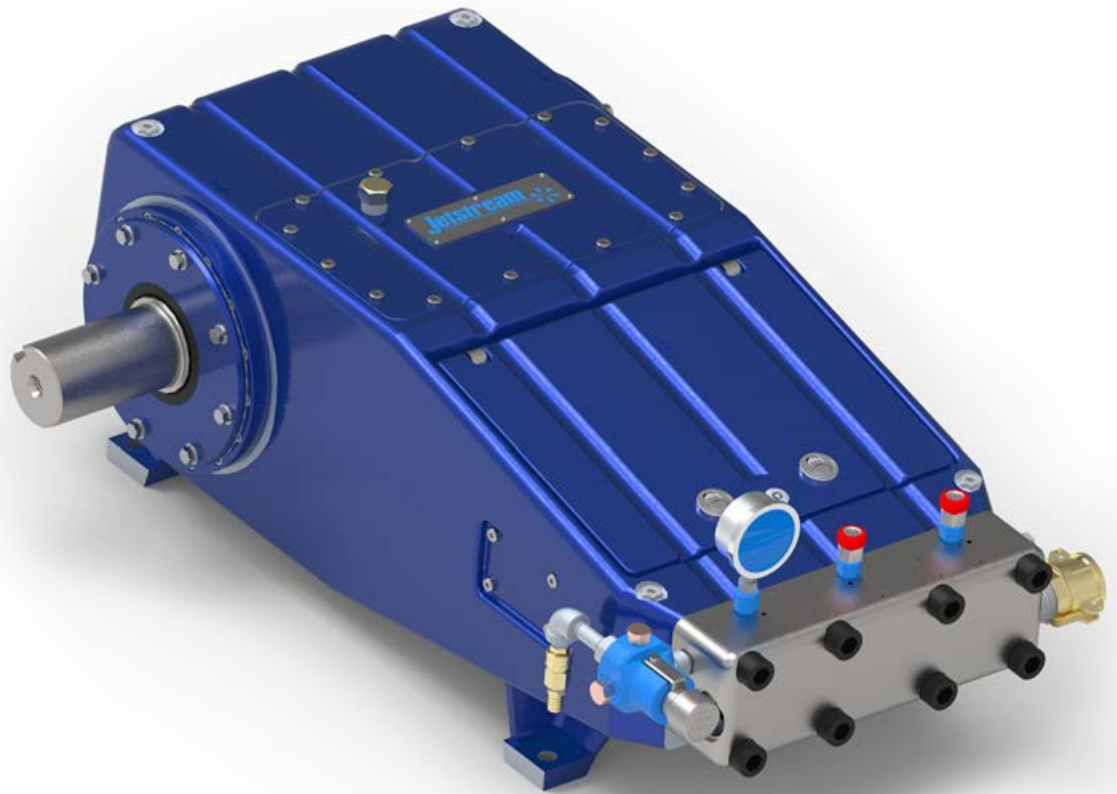
POWER WITH A PURPOSE

High-pressure waterblasting is used in a wide variety of industrial applications:

- SURFACE PREPARATION AND CLEANING
- TANK AND VESSEL CLEANING
- POOL PLASTER REMOVAL
- HYDRODEMOLITION
- HEAT EXCHANGER TUBE CLEANING
- HYDROSTATIC TESTING
- PIPE AND TUBE CLEANING
- WATERJET CUTTING

Pressures used typically range from 5,000 psi to 40,000 psi. Depending on the application and material needed to clean, water and waterblasting tools provide an excellent alternative to traditional blasting methods.

Maximize production, reduce operating costs, and increase profits on your next job with Jetstream's waterblasting equipment. We offer a full range of pumps, units, and accessories you need to safely, quickly, and efficiently get the job done.



UNx™ BARESHAFT PUMP

UNRIVALED STRENGTH AND DURABILITY

That's what you get with a Jetstream UNx™ Bareshaft Pump. Our pumps are the most advanced and efficient compact waterblast pumps in the industry. Combining the strength and durability of a proven power end workhorse with the unparalleled simplicity, serviceability, and versatility of the UNx™ fluid end design, Jetstream bareshaft pumps are the best choice for those building their own system or replacing a complicated, worn, or unreliable pump.

UNx™ Bareshaft Pumps are available in five different power input ranges, up to 600 horsepower (447 kw), and coupled with a Jetstream UNx™ Fluid End, provide flow* rates up to 115 gallons per minute.

With features that ensure you can get the job done safely, efficiently, and effectively every day for years to come, UNx™ Bareshaft Pumps are designed to be a good investment for your business.

FEATURES AND BENEFITS

- The strongest ductile iron power frame in the industry is made tough to last
- A heat-treated billet alloy steel crankshaft delivers superior performance at high power inputs
- The largest bearings of any pump on the market to prevent overheating
- Components designed to be easily serviced and maintained to reduce downtime
- Use of simple, bolt-on Jetstream UNx™ Fluid Ends for fast in-the-field pressure range conversions to allow one pump to perform multiple applications

NOTE

The customer can specify the placement of the crankshaft (right-hand or left-hand side) and paint color for a bareshaft pump. Standard paint color is blue. Other paint colors are available upon request.

*Displacement (flow) values represented refer to "theoretical" flow, neglecting inefficiency resulting from compressibility of water and expansion of pressure-bearing components.

Solutions
RENTER'S RESPONSIBILITY:
 1. ENGINE OIL: CHECK/OILS: ENGINE OIL
 2. FRESHWATER PUMP: SERVICE/LEAK OIL
 3. PPE: WEAR: CONFINED: SAFETY OIL
 4. CHECK & ADD COOLANT: IF NEEDED
 5. INSPECTION: PER 4 ENGINE: WHEN PROMPTED
 6. CHECK OIL: OIL LEVEL: REFILL: BEFORE 20% LEFT (PER 4 OIL)

BEFORE TOWING EQUIPMENT MAKE SURE
 1. TRAILER LIGHTS: POWER & SAFETY CHAINS: ARE CONNECTED
 2. ELECTRICAL: BRAKES: WORK: AND: BREAKAWAY: CABLE: IS: ATTACHED

Refer to Johnson's SERVICE OPERATOR MANUAL for a complete list of instructions

MAINTENANCE: EQUIPMENT: BEFORE: RETURNING: ON: A: CLEANING:
 FEE: WILL: BE: APPLIED: TO: FINAL: RENTAL: BILL

RENTAL: CHARGES: AND: OTHER: RENTAL: FEES: ARE: RETURNED: TO: RENTAL: CENTER

SERVICE & REPAIR 888-415-7368

⚠ DANGER
HIGH PRESSURE WATER
JETS CAN KILL!
 Always wear personal protective equipment (PPE) suitable for specific pressure.

BEFORE OPERATING:
 1. Check all safety valve devices for proper operation and all pressure damage or leakage.
 2. Inspect all high pressure hoses for damage or leakage.
 3. Disconnect nozzle at control gun or lance.
 4. Open bypass valve four (4) full turns (if equipped).
 5. Purge hose of debris.
 6. Stop pump and install blast nozzle.
 7. Start blasting at low pressure and slowly increase to desired pressure.
 8. DO NOT blast at higher pressure than lowest rated system component.
 9. Operator performing blasting must have control of pressure.
 10. Minimum of two operators is required, one for safety watch.
 11. After stopping unit always open bypass valve four (4) full turns. Failure to comply could result in death, serious injury or mechanical damage.



CAUTION
THREAD DAMAGE HAZARD!
 Do not use this tool on any material that is softer than the tool's threads. Use only on materials that are harder than the tool's threads. Use only on materials that are harder than the tool's threads.

UNW MODEL
 WARNING: HADICOPPER LONGER THAN OF THE PUMP CAN BE USED
 FLUID END
 2009252
 672781
 14
 20000

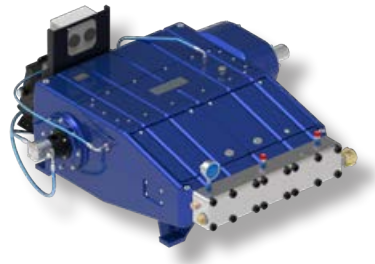
20000
 PSI
 14
 20000

⚠ DANGER
 HIGH PRESSURE WATER
 JETS CAN KILL!
 Always wear personal protective equipment (PPE) suitable for specific pressure.

⚠ WARNING
 Do not use this tool on any material that is softer than the tool's threads. Use only on materials that are harder than the tool's threads. Use only on materials that are harder than the tool's threads.



BARESHAFT PUMP COMPARISON



5200Q SERIES

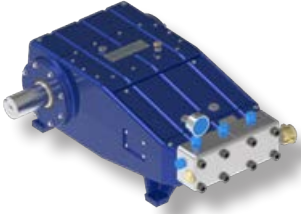


5200 SERIES

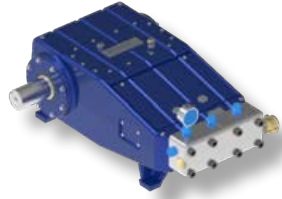
DESIGN	Quintuplex (Five plunger)	Triplex (Three plunger)
PLUNGER STROKE (in/mm)	5.25 (133)	5.25 (133)
MAXIMUM POWER	700 hp (522 kw)	400 hp (298 kw)
MAXIMUM FLOW (gpm AT psi)*	109.8 gpm AT 10,000 psi	62.1 gpm AT 10,000 psi
MAXIMUM FLOW (lpm AT bar)*	409 lpm AT 689 bar	235 lpm AT 689 bar
GEAR DRIVE	Integrated	Optional
PUMP SPEED RANGE (rpm)	200-547	183-518
MAXIMUM FRAME LOAD (lb/kn)	17,716 (79)	17,750 (79)
TOTAL WEIGHT (lb/kg)	5,000 (2268)	2,100 (954)
CONNECTION TYPE (Discharge)	15K: Jetstream HF 20K: 20K Port Female	15K: Jetstream HF 20K: 20K Port Female 40K: Jetstream 40K Port
CONNECTION TYPE (TOP ACCESSORY PORTS)	15K: Jetstream HF 20K: 20K Port Female	15K: Jetstream HF 20K: 20K Port Female 40K: Jetstream 40K Port
OIL CAPACITY (gal/l)**	27 (102)	9 (34)
DIMENSIONS (LxWxH, in/mm)	68.8 (1737) x 62.9 (1592) x 30.9 (786.4)	53.7 (1365) x 34.3 (870) x 20.0 (508)

* Displacement (flow) values represented refer to “theoretical” flow, neglecting inefficiency resulting compressibility of water and expansion of pressure-bearing components.

** See manual for list of approved oils.



4200 SERIES



3600 SERIES

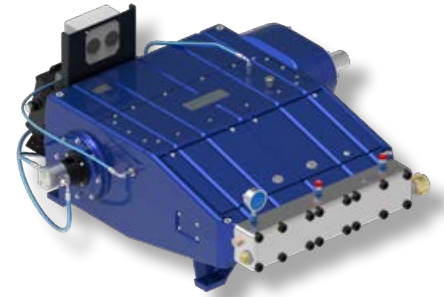


3000 SERIES

Triplex (Three plunger)	Triplex (Three plunger)	Triplex (Three plunger)
4.25 (108)	3.60 (92)	3.00 (76)
325 hp (242 kw)	270 hp (201 kw)	200 hp (149 kw)
73.5 gpm AT 6,800 psi	62.3 gpm AT 3,500 psi	23.2 gpm AT 6,500 psi
278 lpm AT 469 bar	236 lpm AT 241 bar	88 lpm AT 448 bar
Optional	Optional	Optional
173-518	183-550	200-600
17,750 (79)	17,750 (79)	13,000 (57)
1,800 (820)	1,720 (780)	970 (440)
15K: 3/4" NPT Female 20K: 20K Port Female 40K: Jetstream 40K Port	15K: 3/4" NPT Female 20K: 20K Port Female 40K: Jetstream 40K Port	15K: 1/2" NPT Female 20K: 20K Port Female 40K: 40K Port
15K: 1/2" NPT Female 20K: 20K Port Female 40K: Jetstream 40K Port	15K: 1/2" NPT Female 20K: 20K Port Female 40K: Jetstream 40K Port	15K: 1/2" NPT Female 20K: 20K Port Female 40K: 40K Port
9 (34)	9 (34)	5 (19)
50.6 (1284) x 34.4 (874) x 20.9 (530)	50.6 (1284) x 34.4 (874) x 20.9 (530)	38.7 (983) x 25.3 (642) x 16.4 (416)

5200Q SERIES

DESIGN	QUINTUPLEX (FIVE PLUNGER)
MAX. POWER	700 HP (522 KW)
MAX. FLOW	109.8 GPM (409 LPM) AT 10,000 PSI (689 BAR)
DIMENSIONS L X W X H (in/mm)	68.8 (1737) x 62.9 (1592) x 30.9 (786.4)
GEAR DRIVE	INTEGRATED 3.3 OR 3.9 GEAR RATIO



POWER END SPECS

PLUNGERS										PUMP OIL*			
NO.	STROKE		CONNECTION TYPE	PUMP SPEED RANGE	MAX. POWER INPUT		MAX. FRAME LOAD		TOTAL WEIGHT		TYPE	CAPACITY	
	in	mm			hp	kw	lb	kN	lb	kg		gal	l
5	5.25	133	DISCHARGE 15K: Jetstream HF 20K: 20K Port Female	200-547	700	522	17,716	79	5000	2268	80W-90	27	102

* See manual for list of approved oils.

FLUID END SPECS

PLUNGERS			PUMP DISPLACEMENT AT SPECIFIED PUMP SPEEDS**													MAX OPERATING PRESSURE		
NO.	DIAMETER		MAX POWER INPUT		200 RPM		300 RPM		400 RPM		461 RPM		538 RPM		547 RPM		psi	bar
	in	mm	hp	kw	gpm	lpm	gpm	lpm	gpm	lpm	gpm	lpm	gpm	lpm	gpm	lpm		
MODEL 5220Q																		
#11	1.062	26.97	700	522	20.1	76.1	30.2	114.2	40.3	152.3	46.4	175.5	54.2	204.7	55.1	208	20,000	1379
MODEL 5215Q																		
#12	1.200	30.48	700	522	25.7	97.2	38.6	145.8	51.4	194.4	58.6	221.4	69.2	262	70.3	266	15,000	1034
#13	1.335	33.91			31.8	120.3	47.7	180.5	63.7	240.6					87.0	329	12,500	861
#15	1.500	38.10			40.2	151.9	60.3	227.8	80.4	303.8					109.8	415.2	10,000	689

**Flow values represented refer to "theoretical" flow, neglecting inefficiency resulting from compressibility of water and expansion of pressure bearing components.

5200 SERIES

DESIGN	TRIPLEX (THREE PLUNGER)
MAX. POWER	400 HP (298 KW)
MAX. FLOW	62.1 GPM (235 LPM) AT 10,000 PSI (689 BAR)
DIMENSIONS L X W X H (in/mm)	53.7 (1365) X 34.3 (870) X 20.0 (508)
GEAR DRIVE	OPTIONAL (SEE PUMP ACCESSORIES)



POWER END SPECS

PLUNGERS										PUMP OIL*			
NO.	STROKE		CONNECTION TYPE	PUMP SPEED RANGE	MAX. POWER INPUT		MAX. FRAME LOAD		TOTAL WEIGHT		TYPE	CAPACITY	
	in	mm			hp	kw	lb	kN	lb	kg		gal	l
3	5.25	133	DISCHARGE 15K: Jetstream HF 20K: 20K Port Female 40K: Jetstream 40K Port	183-518	400	300	17,750	79	2100	954	80W-90	9	34

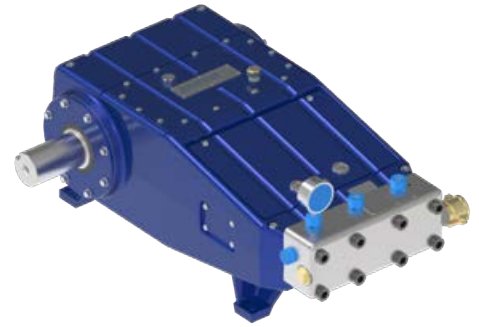
* See manual for list of approved oils.

FLUID END SPECS

PLUNGERS			PUMP DISPLACEMENT AT SPECIFIED PUMP SPEEDS**													MAX OPERATING PRESSURE		
NO.	DIAMETER		MAX POWER INPUT		183 RPM		200 RPM		300 RPM		400 RPM		500 RPM		518 RPM		psi	bar
	in	mm	hp	kw	gpm	lpm	gpm	lpm	gpm	lpm	gpm	lpm	gpm	lpm	gpm	lpm		
MODEL 5240																		
#7	.670	17.02	321	239	4.2	16	4.8	18	7.2	27	9.6	36	12.0	45	13.5	51	40,000	2758
#8	.730	18.54	382	285	5.0	19	5.7	22	8.6	33	11.4	43	14.3	54	14.7	56		
#8HF	.790	20.10	400	300	5.9	22	6.7	25	10	38	13.4	51	16.7	63	17.2	65	36,000	2483
#9	.865	22	400	300	7	27	8	30	12	45	16	61	20	76	20.7	78	30,000	2068
MODEL 5220																		
#9	.900	22.86	290	216	7.5	28	8.7	33	13.0	49	17.4	66	21.7	82	22.4	85	20,000	1379
#10	.980	24.89	344	256	8.9	34	10.3	39	15.4	58	20.6	78	25.7	97	26.5	100		
#11	1.062	26.97	400	300	10.5	40	12.1	46	18.1	69	24.2	92	30.2	114	31.1	118		
MODEL 5215																		
#11	1.100	27.94	325	242	11.2	42	13.0	49	19.4	73	25.9	98	32.4	122	33.6	127	15,000	1034
#12	1.200	30.48	387	288	13.3	50	15.4	58	23.1	87	30.9	117	38.6	146	40.0	151		
#13	1.335	33.91	400	300	16.5	62	19.1	72	28.6	108	38.2	145	47.7	181	49.5	187	12,500	861
#15	1.500	38.10	400	300	20.9	79	24.1	91	36.2	137	48.2	183	60.3	228	62.1	235	10,000	689

**Flow values represented refer to "theoretical" flow, neglecting inefficiency resulting from compressibility of water and expansion of pressure bearing components.

4200 SERIES



DESIGN	TRIPLEX (THREE PLUNGER)
MAX. POWER	325 HP (242 KW)
MAX. FLOW	73.5 GPM (278 LPM) AT 6,800 PSI (469 BAR)
DIMENSIONS L X W X H (in/mm)	50.6 (1284) X 34.4 (874) X 20.9 (530)
GEAR DRIVE	OPTIONAL (SEE PUMP ACCESSORIES)

POWER END SPECS

PLUNGERS										PUMP OIL*			
NO.	STROKE		CONNECTION TYPE	PUMP SPEED RANGE	MAX. POWER INPUT		MAX. FRAME LOAD		TOTAL WEIGHT		TYPE	CAPACITY	
	in	mm			RPM	hp	kw	lb	kN	lb		kg	gal
3	4.25	108	DISCHARGE 15K: Jetstream HF 20K: 20K Port Female 40K: 40K Port TOP PORTS (ACCESSORY) 15K: Jetstream HF 20K: 20K Port Female 40K: 40K Port	173-518	325	242	17,750	79	1800	820	80W-90	9	34

* See manual for list of approved oils.

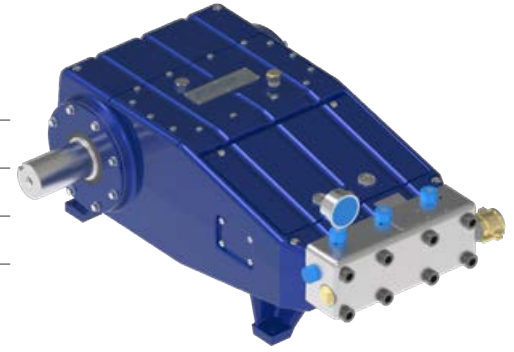
FLUID END SPECS

PLUNGERS				PUMP DISPLACEMENT AT SPECIFIED PUMP SPEEDS**													MAX OPERATING PRESSURE	
NO.	DIAMETER		MAX POWER INPUT		173 RPM		200 RPM		300 RPM		400 RPM		500 RPM		518 RPM		psi	bar
	in	mm	hp	kw	gpm	lpm	gpm	lpm	gpm	lpm	gpm	lpm	gpm	lpm	gpm	lpm		
MODEL 4240																		
#6	.600	15.24	210	156	2.7	10	3.1	12	4.7	18	6.2	24	-	-	8.1	31	40,000	2758
#7	.670	17.02	260	194	3.4	13	3.9	15	5.8	22	7.8	30	-	-	10.1	38		
#8	.730	18.54	310	231	4.0	15	4.6	18	6.9	26	9.2	35	-	-	11.9	45		
#8HF	.790	20.10	325	242	4.7	18	5.4	20	8.1	31	10.8	41	-	-	14.0	53	36,000	2483
#9	.865	22.0	325	242	5.7	22	6.5	25	9.7	37	13.0	49	-	-	16.8	64	30,000	2068
MODEL 4220																		
#8	.800	20.32	190	142	4.9	19	5.6	21	8.3	32	11.1	42	-	-	14.4	54	20,000	1379
#9	.900	22.86	250	186	6.1	23	7.0	27	10.5	40	14.1	53	-	-	18.2	69		
#10	.980	24.89	275	205	7.3	28	8.3	32	12.5	47	16.7	63	-	-	21.6	82		
#11	1.062	26.97	325	242	8.5	32	9.8	37	14.7	56	19.6	74	-	-	26.3	96		
MODEL 4215																		
#10	.980	24.89	210	157	7.2	27	8.3	32	12.5	47	16.7	63	20.8	79	21.6	82	15,000	1034
#11	1.100	27.94	260	194	9.0	34	15.4	58	23.1	87	30.9	117	38.6	146	40.0	151		
#12	1.200	30.48	325	242	10.8	41	12.5	47	18.7	71	25.0	95	31.2	118	32.2	122		
#13	1.335	33.91	325	242	13.3	50	15.5	59	23.2	88	30.9	117	38.6	146	40.0	151	12,500	1034
#15	1.500	38.10	325	242	16.8	63	19.5	74	29.3	111	39.0	148	48.8	185	50.5	191	10,000	689
#16	1.670	42.42	325	242	20.9	79	24.2	92	36.3	137	48.4	183	60.5	229	62.6	237	8,000	551
#18	1.810	45.97	325	242	24.5	93	28.4	108	42.5	161	56.7	215	70.9	268	73.5	278	6,800	469

**Flow values represented refer to "theoretical" flow, neglecting inefficiency resulting from compressibility of water and expansion of pressure bearing components.

3600 SERIES

DESIGN	TRIPLEX (THREE PLUNGER)
MAX. POWER	270 HP (201 KW)
MAX. FLOW	62.3 GPM (236 LPM) @ 3,500 PSI (241 BAR)
DIMENSIONS L X W X H (in/mm)	50.6 (1284) X 34.4 (874) X 20.9 (530)
GEAR DRIVE	OPTIONAL (SEE PUMP ACCESSORIES)



POWER END SPECS

PLUNGERS										PUMP OIL*			
NO.	STROKE		CONNECTION TYPE	PUMP SPEED RANGE	MAX. POWER INPUT		MAX. FRAME LOAD		TOTAL WEIGHT		TYPE	CAPACITY	
	in	mm		RPM	hp	kw	lb	kN	lb	kg		gal	l
3	3.60	92	DISCHARGE 15K: Jetstream HF 20K: 20K Port Female 40K: 40K Port TOP PORTS (ACCESSORY) 15K: Jetstream HF 20K: 20K Port Female 40K: 40K Port	183-550	270	201	17,750	79	1720	780	80W-90	9	34

* See manual for list of approved oils.

FLUID END SPECS

PLUNGERS			PUMP DISPLACEMENT AT SPECIFIED PUMP SPEEDS**													MAX OPERATING PRESSURE		
NO.	DIAMETER		MAX POWER INPUT		183 RPM		200 RPM		300 RPM		400 RPM		500 RPM		518 RPM		psi	bar
	in	mm	hp	kw	gpm	lpm	gpm	lpm	gpm	lpm	gpm	lpm	gpm	lpm	gpm	lpm		
MODEL 3640																		
#6	.600	15.24	190	142	2.4	9.0	2.6	10.0	4.0	15.0	5.3	20.0	-	-	-	-	40,000	2,758
			170	127													36,000	2,482
#7	.670	17.02	220	164	3.0	11.0	3.3	12.0	4.9	19.0	6.6	25.0	-	-	-	-	40,000	2,758
			190	142													33,000	2,275
			170	127													29,000	2,000
#8	.730	18.54	270	201	3.6	14.0	3.9	15.0	5.9	22.0	7.8	30.0	-	-	-	-	40,000	2,758
			230	172													35,000	2,413
			190	142													27,500	1,896
			170	127													24,500	1,689
#8HF	.790	20.07	270	201	4.2	16.0	4.6	17.0	6.9	26.0	9.2	35.0	-	-	-	-	36,000	2,482
			230	172													30,000	2,068
#9	.865	21.97	270	201	5.0	19.0	5.5	21.0	8.2	31.0	11.0	42.0	-	-	-	-	30,000	2,068
			230	172													25,000	1,724

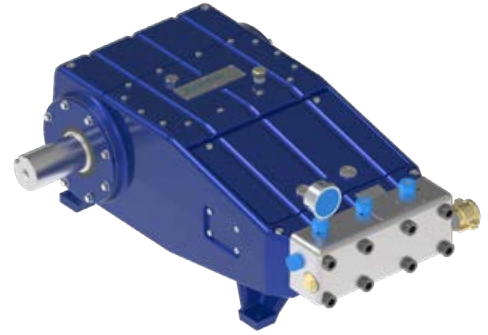
**Flow values represented refer to "theoretical" flow, neglecting inefficiency resulting from compressibility of water and expansion of pressure bearing components.

FLUID END SPECS

PLUNGERS				PUMP DISPLACEMENT AT SPECIFIED PUMP SPEEDS**												MAX OPERATING PRESSURE		
NO.	DIAMETER		MAX POWER INPUT		183 RPM		200 RPM		300 RPM		400 RPM		500 RPM		518 RPM		psi	bar
	in	mm	hp	kw	gpm	lpm	gpm	lpm	gpm	lpm	gpm	lpm	gpm	lpm	gpm	lpm		
MODEL 3620																		
#8	.800	20.32	170	127	4.3	16	4.7	18	7.1	27	9.4	36	11.8	44	12.2	46	20,000	1,379
#9	.900	22.86	200	149	5.4	21	6.0	23	8.9	34	11.9	45	14.9	56	15.4	59	20,000	1,379
			190	142													18,000	1,241
			170	127													16,000	1,103
#10	.980	24.89	235	175	6.5	24	7.1	27	10.6	40	14.1	53	17.6	67	18.3	69	20,000	1,379
			190	142													15,000	1,034
#11	1.06	26.97	270	201	7.6	29	8.3	31	12.4	47	16.6	63	20.7	78	21.5	81	20,000	1,379
MODEL 3615																		
#9	.900	22.86	150	112	5.4	21	6.0	23	8.9	34	11.9	45	14.9	56	15.4	58	15,000	1034
#10	.980	24.89	190	142	6.5	24	7.1	27	10.6	40	14.1	53	17.6	67	18.3	69	15,000	1034
			170	127													13,500	931
			150	112													12,000	827
#11	1.100	27.94	230	172	8.1	31	8.9	34	13.3	50	17.8	67	22.2	84	23.0	87	15,000	1034
			190	142													12,000	827
			170	127													11,000	758
			150	112													10,000	689
#12	1.200	30.48	270	201	9.7	37	10.6	40	15.9	60	21.2	80	26.4	100	27.4	104	15,000	1034
			190	142													10,000	689
			170	127													9,000	620
			150	112													8,000	551
#13	1.335	33.91	270	201	12.0	45	13.1	50	19.6	74	26.2	99	32.7	124	33.9	128	12,500	862
			190	142													8,000	551
			170	127													7,500	517
			150	112													6,500	448
#15	1.500	38.10	270	201	15.1	57	16.5	63	24.8	94	33.1	125	41.3	156	42.8	162	10,000	689
			190	142													6,500	448
			170	127													6,000	413
			150	112													5,000	344
#16	1.670	42.42	270	201	18.7	71	20.5	78	30.7	116	41.0	155	51.2	194	53.1	201	8,000	551
			190	142													5,000	344
			170	127													4,500	310
			150	112													4,000	276
#18	1.800	45.72	270	201	22.0	83	24.1	91	36.1	137	48.1	182	60.2	228	62.3	236	6,800	469
			190	142													4,500	310
			170	127													4,000	276
			150	112													3,500	241

**Flow values represented refer to "theoretical" flow, neglecting inefficiency resulting from compressibility of water and expansion of pressure bearing components.

3000 SERIES



DESIGN	TRIPLEX (THREE PLUNGER)
MAX. POWER	200 HP (149 KW)
MAX. FLOW	23.2 GPM (88 LPM) AT 6,800 PSI (448 BAR)
DIMENSIONS L X W X H (in/mm)	38.7 (983) X 25.3 (642) X 16.4 (416)
GEAR DRIVE	OPTIONAL (SEE PUMP ACCESSORIES)

POWER END SPECS

PLUNGERS										PUMP OIL*			
NO.	STROKE		CONNECTION TYPE	PUMP SPEED RANGE	MAX. POWER INPUT		MAX. FRAME LOAD		TOTAL WEIGHT		TYPE	CAPACITY	
	in	mm			RPM	hp	kw	lb	kN	lb		kg	gal
3	3.00	76	DISCHARGE 15K: Jetstream LF 20K: 20K Port Female 40K: 40K Port TOP PORTS (ACCESSORY) 15K: Jetstream LF 20K: 20K Port Female 40K: 40K Port	200 - 600	200	149	13,000	57	970	440	80W-90	5	19

* See manual for list of approved oils.

FLUID END SPECS

PLUNGERS				PUMP DISPLACEMENT AT SPECIFIED PUMP SPEEDS*										MAX OPERATING PRESSURE		
NO.	DIAMETER		MAX POWER INPUT		200 RPM		300 RPM		400 RPM		500 RPM		600 RPM		psi	bar
	in	mm	hp	kw	gpm	lpm	gpm	lpm	gpm	lpm	gpm	lpm	gpm	lpm		
MODEL 3040																
#5	.530	13.46	134	100	1.7	6	2.6	10	3.4	13	4.3	16	5.2	20	40,000	2758
#5HF	.550	13.97	143	107	1.8	7	2.8	11	3.7	14	4.6	17	5.6	21		
#6	.580	14.73	159	119	2.1	8	3.1	12	4.1	16	5.1	19	6.2	23		
#7	.645	16.38	197	147	2.5	10	3.8	14	5.1	19	6.4	24	7.6	29		
MODEL 3020																
#6	.635	16.13	100	75	2.5	9	3.7	14	4.9	19	6.2	24	7.4	28	20,000	1379
#7	.700	17.78	120	89	3.0	11	4.5	17	6.0	23	7.5	28	9.0	34		
#8	.780	19.86	150	112	3.7	14	5.6	21	7.5	28	9.3	35	11.2	42		
#9	.920	23.37	200	149	5.2	20	7.8	30	10.4	39	12.9	49	15.5	59		
MODEL 3015																
#7	.735	18.67	96	67	3.3	13	5.0	19	6.6	25	8.3	31	9.9	37	15,000	1034
#8	.800	20.32	114	82	3.9	15	5.9	22	7.8	30	9.8	37	11.8	44	15,000	1034
			96	67											12,000	827
#9	.900	22.86	150	112	5.0	19	7.4	28	9.9	38	12.4	47	14.9	56	15,000	1034
			125	93											12,500	861
			90	67											10,000	689
#10	1.000	25.40	200	149	6.1	23	9.2	35	12.2	46	15.3	58	18.4	70	15,000	1034
			150	112											12,000	827
			125	93											10,000	689
			90	67											8,000	551
#10HF	1.062	26.97	200	149	6.9	26	10.4	39	13.8	52	17.2	65	20.7	78	15,000	1034
			200	149											13,000	896
#11	1.125	28.58	150	112	7.7	29	11.6	44	15.5	59	19.4	73	23.2	88	9,000	620
			125	93											8,000	551
			90	67											6,500	448

*Flow values represented refer to "theoretical" flow, neglecting inefficiency resulting from compressibility of water and expansion of pressure bearing components.



UNx™ FLUID ENDS

The UNx™ Fluid End is standard on every Jetstream Unit or Bareshaft Pump. It is also available as an addition to an existing Jetstream 3000, 3600, 4200, 5200, or 6000 Series pump.

Don't have a Jetstream Bareshaft Pump? We've got you covered. Jetstream has created a wide variety of UNx™ Fluid Ends conversions to adapt your existing competitor pump. These conversions – available for most major competitor pumps – deliver all the unique benefits of the UNx™ Fluid End design while interfacing seamlessly with your current pump.

THE UNx™ ADVANTAGE

Every UNx™ Fluid End includes innovative features to deliver the following benefits to you:

SIMPLICITY

- Fewer parts than other fluid ends
- Uni-Valve™ one-piece cartridges include suction and discharge valves, seats, springs, and seals
- Swing-down manifold for easy access to the components

SERVICEABILITY

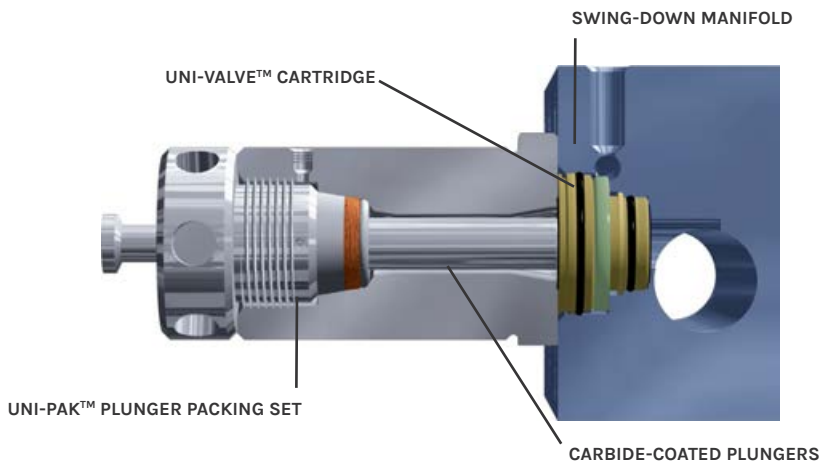
- Quick serviceability, reducing downtime and maintenance in the field
- Five-minute packing change
- Fifteen-minute pop-out valve cartridge change
- No special tools or equipment required
- Plungers clamped; NOT threaded

VERSATILITY

- Pressures from 6,000 psi to 40,000 psi
- Fast in-the-field pressure range conversions with simple bolt-on Jetstream UNx™ Fluid Ends
- Convertibility of the UNx™ design allows one unit to do the work that another manufacturer would require multiple units or several hours of downtime to perform

OTHER FEATURES

- Water lubricating packing set
- Colmonoy coated plungers (ceramic available upon request)
- High volumetric efficiency
- All pressure-bearing components precision machined high-quality stainless steel
- Pulsation dampener built into the manifold
- Superior performance to optimize productivity



15-MINUTE VALVE REPLACEMENT



5-MINUTE PACKING CHANGE



SLIDE-OUT STUFFING BOXES



Jetstream



PUMP ACCESSORIES

EVERYTHING YOU NEED TO SUCCEED

Jetstream's full range of recommended pump and fluid end parts and accessories help you succeed on every job. From pump tools, valves, hydro-throttles, filters, and other add-ons, to gear drives and spare parts packages, we have everything you need to maximize performance of your pump and ensure a safe and uninterrupted workday.

- Pump Tools (Wrenches, Studs, Lubricants)
- Filters and Filter Assemblies
- Pressure Gauges
- Rupture Disc Assemblies and Discs
- Valves (Bypass, Air-Operated, Hydraulic, Electric, Multi-Gun Valves)
- Hydro-Throttle Assemblies
- Multi-Unit Manifold
- Hydrostatic Test Valve (HTV)

UNx™ FLUID END SPARE PARTS PACKAGES

A must-have for field repairs, these packages include all major fluid end replacement parts packaged together for easy transport and storage.

- Available for most UNx™ Fluid Ends
- Packaged in a top-of-the-line, waterproof case with tough custom foam inlay
- Contents: 1 or 3 Plungers, 3 Uni-Valves, 3 Packing Sets, 3 Uni- Valve Seal Kits, Locking Waterproof Case and Keys, 10 Burst Discs (5 each at primary and secondary relief pressures, or 10 at the same relief pressure, if only one rupture disc holder is used)



GEAR DRIVES

An optional Gear Drive can be added to all 5200, 4200, 3600 and 3000 Series Bareshaft Pumps to provide direct coupling of the pump to the engine. Several options are available. Please specify the specific clocking position needed when ordering.

PART NO.	DRIVE RATIO	MAX. INPUT SPEED
5200 / 4200 / 3600 SERIES		
12V		
59100-16-69-12V	4.31:1	2230 RPM
59100-17-68-12V	4.00:1	2070 RPM
59100-19-67-12V	3.53:1	1825 RPM
59100-22-64-12V	2.91:1	1500 RPM
24V		
59100-16-69-24V	4.31:1	2230 RPM
59100-17-68-24V	4.00:1	2070 RPM
59100-19-67-24V	3.53:1	1825 RPM
59100-22-64-24V	2.91:1	1500 RPM
3000 SERIES		
WITHOUT COOLING COIL		
58501-17-68	4.00:1	2400 RPM
58501-18-66	3.67:1	2200 RPM
58501-21-23	3.00:1	1800 RPM
58501-24-60	2.50:1	1500 RPM
WITH COOLING COIL		
68453-17-68	4.00:1	2400 RPM
68453-18-66	3.67:1	2200 RPM
68453-21-63	3.00:1	1800 RPM
68453-24-60	2.50:1	1500 RPM





WATERBLAST UNITS

HOW WORK GETS DONE

Jetstream water blasters are available in a wide selection of standard models with nearly limitless options for customization to suit specific needs. All Jetstream water blasters employ UNx™ Bareshaft Pump and Fluid End technology for superior performance, greater flexibility in the field, and reduced downtime and maintenance.

CUSTOM UNITS

In addition to our range of standard units and options, close collaboration between Jetstream solutions providers and engineers provide almost unlimited custom options to meet specialized needs. Common requests include:

- Custom trailers and skids
- Special control devices (pneumatic, electronic, hydraulic)
- Customizable to meet special plant requirements, Jetstream can build the perfect unit for any job

HORSEPOWER CHART

COMMON ENGINE POWERS		PUMP DISPLACEMENT*		
hp	kw	gpm	lpm	DISPLACEMENT PRESSURE psi
TWINFORCE™				
800	600	154.0	582	8,000
		62.2	235	20,000
		29.4	112	40,000
650	484	125.2	470	8,000
		42.8	162	20,000
		23.8	90	40,000
5200Q SERIES				
700	522	109.8	415.2	10,000
		55.1	208.1	20,000
		36.5	138.1	40,000
500	367	78.5	296.6	10,000
		39.3	148.7	20,000
		21.8	82.3	36,000
5200 SERIES				
400	300	77.0	291	8,000
		31.1	118	20,000
		14.7	56	40,000
344	256	26.5	100	20,000
290	216	22.4	85	20,000
4200 SERIES				
325	242	62.6	237	8,000
3600 SERIES				
170	126	36.0	136	8,000
270	201	21.5	81	20,000
235	175	18.3	69	20,000
200	149	15.4	58	20,000
170	126	12.2	46	20,000
270	201	10.8	41	40,000
3000 SERIES				
150	112	23.2	88	8,000
125	93	23.2	88	8,000
110	82	18.4	69	8,000
150	116	11.2	42	20,000
120	89	9.0	34	20,000
110	75	7.4	28	20,000
154	114	5.2	20	40,000

The table above provides pump performance specifications for the most common engine power ratings used in each series of our water blasters. Values shown are for diesel engines only. Contact Jetstream for electric unit chart. * Displacement (flow) values represented refer to "theoretical" flow, neglecting inefficiency resulting from compressibility of water and expansion of pressure-bearing components.

WATERBLAST UNIT COMPARISON



X
SERIES

From the innovative UNx™ Pump down to the EZ- Lube wheel bearings, every detail of the X-Series was engineered to minimize maintenance and provide contractors with the most productive and versatile water blaster on the market today.



TwinForce™

The TwinForce™ Series was engineered to outperform other high-flow units by providing a multi-functional product to enhance the utilization of two water blasting units on one single trailer.

HORSEPOWER (hp)	80 - 400	650 - 800 (dual configuration)
KILOWATTS (kW)	59 - 298	485 - 597 (dual configuration)
FLOW (gpm)*	5.1 - 90.4	23.8 - 180.8
FLOW (lpm)*	19.3 - 342.2	90.1 - 684.4
PRESSURE RANGE (psi)	5,000 - 40,000	5,000 - 40,000
PRESSURE RANGE (bar)	350 - 2758	350 - 2758

* Displacement (flow) values represented refer to “theoretical” flow, neglecting inefficiency resulting compressibility of water and expansion of pressure-bearing components.



5200 QUINTUPLEX

The 5200 Quintuplex waterblast unit offers high flow capability and premium features on an ergonomic and capable integrated trailer with a low deck height and easy towing.



ELECTRIC UNITS

Jetstream manufactures several models of electric water blasters for in-plant installations configured to user requirements.



HydroForce

Jetstream's HydroForce™ water blasting units provide pressures up to 40,000 psi to support hydrostatic testing in the oil and gas industry.



3000HT SERIES

The 3000HT is engineered for accurate hydrostatic testing in any environment around the world.

500 - 700	60 - 600	80 - 325	125
367 - 522	45 - 447	60 - 242	93
14.4 - 109.8	Configuration dependant	7.4 - 62.7	9.0 - 23.2
138.1 - 408.4	Configuration dependant	28.0 - 237.3	34.1 - 87.8
10,000 - 40,000	5,000 - 40,000	5,000 - 40,000	7,500 - 20,000
350 - 2758	350 - 2758	350 - 2758	517 - 1379

X-SERIES

Every detail of the X-Series is engineered to minimize maintenance and maximize uptime. Available as a skid or trailer unit, X-Series diesel waterblasters offer a host of features to provide contractors with enhanced performance, superior durability, and unsurpassed operating efficiency. Working pressures from 5,000 to 40,000 psi (350 to 2,750 bar).

PERFORMANCE SPECIFICATIONS

- Maximum Power: 400 hp (298 kW)
- Maximum Operating Pressure: 40,000 psi (2758 bar)
- Minimum Operating Pressure: 5,000 psi (350 bar)

KEY BENEFITS

- 80 to 400 hp (59 to 298 kW) high performance diesel engines
- Pilot bearing free PTOs and covered banded belt drive
- Guardian™ Waterblast Filtration System extends component life and increases uptime with built-in filtration
- Available as a skid or low profile trailer with balanced weight distribution for stable towing
- State-of-the-art controls
- Electronic throttle control
- Hand-adjustable bypass valve
- Shutdown system to protect both the engine and the pump

OPTIONAL FEATURES

- Lightweight (<10,000 lbs) configuration
- Low profile (82") height
- Stationary skid
- 6,000 to 40,000 psi conversion kits
- Remote shutdown system
- Regulator valve for shut-in applications
- Electric or hydraulic brakes
- Gooseneck trailer
- Spare tire package
- Diamond-plate protective fender tops
- Workbench and industrial strength vise
- Forklift pads
- Powder-coated or polished aluminum wheels
- Packing lube water recirculation package
- Charge pump**
- Engine enclosure
- Air compressor package
- Safety package w/fire extinguisher and grounding cable
- Fuel saving Hydro-Throttle
- Special application units (i.e. oil field test pumps and hot water units)

X SERIES



COMMON CONFIGURATIONS

ENGINE/MOTOR MFG. (SPECIFY IF TIER 4 FINAL OR INTERIM)	MOTOR/ENGINE POWER		DIMENSIONS (L X W X H) (IN)	TOTAL WEIGHT (EMPTY)	
	hp	kW		lb	kg
John Deere 4.5L T4F (Skid)	173	129	150 x 73 x 77	6,500	2,945
John Deere 4.5L T4F (Trailer)	173	129	197 x 90 x 98	7,150	3,243
John Deere 9L T4F (Trailer)	325	242	211 x 97 x 97.5	10,800	4,892
Cummins QSB6.7 T4 (Trailer)	326	243	211 x 97 x 86	8,685	3,939
John Deere	400	298	211 x 97 x 97.5	10,150	4,604
Cummins QSL9	415	309	211 x 97 x 91	10,150	4,604

*Weights and dimensions shown are for reference only and actuals will vary based on configuration.

**Standard on all X5200 series models and models equipped with 40,000 PSI fluid end.

NOTE: John Deere and Cummins are trademarked and/or registered tradenames of their respective companies. Jetstream disclaims any and all rights to these marks.

TWINFORCE

The TwinForce™ Series was engineered to outperform other high-flow units by providing a multi-functional product, utilizing two water blasting units on a single trailer. Like all Jetstream waterblast systems, the TwinForce™ Series is built around the UNx™ Fluid End for unmatched versatility and simplified maintenance.

A TwinForce™ Unit can function as a large capacity 650 hp or 800 hp dual unit, a single 325 hp or 400 hp unit with the second unit as a back-up, or as two independent units running at different pressures. The versatility is endless and provides the flexibility to handle any application.

KEY BENEFITS

- Jetstream UNx™ Fluid End
- Operating pressure conversions can be performed within minutes
- Two complete units with three functional options
- Multiple flow rates for high capacity applications
- Dual 200 gpm filtration stainless steel filters (two for each unit)
- Dual pressure control station provides full instrumentation at your fingertips
- Dual fuel tanks
- Pump Maintenance in the field without compromising durability

PERFORMANCE SPECIFICATIONS

- Maximum Power: 800 hp (597 kW)
- Maximum Operating Pressure: 40,000 psi (2758 bar)
- Minimum Operating Pressure: 8,000 psi (551 bar)

COMMON CONFIGURATIONS

ENGINE/MOTOR MFG. (SPECIFY IF TIER 4 FINAL OR INTERIM)	MOTOR/ENGINE POWER		DIMENSIONS (L X W X H) (IN)	TOTAL WEIGHT (EMPTY)	
	hp	kW		lb	kg
John Deere 9L T4F	325	242	391 x 101 x 114	27,755	12,589
Cummins QSL9	415	309	391 x 101 x 108	27,755	12,589

*Weights and dimensions shown are for reference only and actuals will vary based on configuration.



5200 QUINTUPLEX

Building on the success and innovation of the Jetstream X-Series units, the 5200 Quintuplex waterblast unit offers high flow capability and premium features on an ergonomic and capable integrated trailer with a low deck height and easy towing.

The 5200Q UNx™ Pump is powered by a powerful diesel engine coupled with a transmission that enables operators to select a wide range of pump outputs to suit any job's flow requirements. Jetstream bareshaft pumps are designed with advanced features that dominate in the field, like fast change packing and swappable fluid ends to convert to different pressure ranges. The UNx™ Fluid End's strength and durability make it the top choice for industrial cleaning challenges.

KEY BENEFITS

- Jetstream UNx™ Fluid End
- Operating pressure conversions can be performed within minute
- 4-speed transmission and integrated pump gear drive for efficient performance
- Gaurdian Tripple 200 gpm filtration system
- Pressurized and cooled oil system for extended run times
- Low deck integrated gooseneck trailer with storage, steps and crane
- Positionable control panel for easy access either from ground or on trailer deck

PERFORMANCE SPECIFICATIONS

- Maximum Power: 700 hp (522 kW)
- Maximum Operating Pressure: 40,000 psi (2758 bar)
- Minimum Operating Pressure: 10,000 psi (551 bar)

COMMON CONFIGURATIONS

ENGINE/MOTOR MFG. (SPECIFY IF TIER 4 FINAL OR INTERIM)	MOTOR/ENGINE POWER		DIMENSIONS (L X W X H) (IN)	TOTAL WEIGHT (EMPTY)	
	hp	kW		lb	kg
John Deere PSL	684	503	353 x 105 x 112	21,300	9661.5
Cummin QSX15	675	496			

*Weights and dimensions shown are for reference only and actuals will vary based on configuration.

5200 QUINTUPLEX



ELECTRIC UNITS

Electric Units are the perfect solution for safe, efficient operations within process plants, industrial operations, and military environments. Available as stationary skids or steerable in-plant trailers with input power from 60 to 600 hp (45 to 447 kW) at working pressures from 5,000 to 40,000 psi (350 to 2750 bar).

KEY BENEFITS

- TEFC or explosion proof motors
- Soft-start or variable frequency drive (VFD) starters

PERFORMANCE SPECIFICATIONS

- Maximum Power: 600 hp (447 kW)
- Maximum Operating Pressure: 40,000 psi (2758 bar)
- Minimum Operating Pressure: 5,000 psi (350 bar)

COMMON CONFIGURATIONS

ENGINE/MOTOR MFG. (SPECIFY IF TIER 4 FINAL OR INTERIM)	MOTOR/ENGINE POWER		DIMENSIONS (L X W X H) (IN)	TOTAL WEIGHT (EMPTY)	
	hp	kW		lb	kg
Electric 380V 50Hz	125	93	85 x 70 x 75	4,250	1,925
Electric 460V 60Hz	300	224	77 x 96 x 79	7,150	3,239
Electric 460V 60Hz	600	441	74 x 153 x 83	12,250	5,546

*Weights and dimensions shown are for reference only and actuals will vary based on configuration.





HYDROFORCE

When tough under pressure matters, turn to the versatile Jetstream HydroForce™ Unit. This series of hydrostatic testing units is designed for accurate blow out pressure (BOP) pipeline and wellhead testing. They are mounted on a heavy-duty trailer unit with integrated fluid containment.

The HydroForce™ Series features choices of 80 to 325 hp tier 3 or tier 4 diesel engines, delivering outputs from 23.8 gpm (90.1 lpm) @ 40,000 psi (2758 bar) up to 62.7 gpm (237 lpm) @ 8,000 psi (551 bar) when using a high-capacity water tank and the Jetstream HTV test valve.

KEY BENEFITS

- Jetstream UNx™ Fluid End
- Designed for accurate blow out pressure (BOP) pipeline and wellhead testing
- Pump Maintenance in the field without compromising durability
- Operating pressure conversions can be performed within minutes
- High Capacity Aluminum Fuel Tank Safety Shutdown Systems protect against low oil pressure and high temperature

PERFORMANCE SPECIFICATIONS

- Maximum Power: 325 hp (242 kW)
- Maximum Operating Pressure: 40,000 psi (2758 bar)
- Minimum Operating Pressure: 8,000 psi (551 bar)

OPTIONAL FEATURES

- Flood light
- Hose rack
- Grease lube manifold
- Work bench
- Jetstream HTV
- Murphy Switch gauge

COMMON CONFIGURATIONS

ENGINE/MOTOR MFG. (SPECIFY IF TIER 4 FINAL OR INTERIM)	MOTOR/ENGINE POWER		DIMENSIONS (L X W X H) (IN)	TOTAL WEIGHT (EMPTY)	
	hp	kW		lb	kg
John Deere 4.5L T3	125	93	304 x 101 x 100	11,200	5,074
Electric 460V 60Hz	300	224	77 x 96 x 79	7,150	3,239
John Deere 9L T4F	325	242	304 x 101 x 110	16,250	7,361

*Weights and dimensions shown are for reference only and actuals will vary based on configuration.

3000HT SERIES

Available as a skid or trailer mounted unit, the 3000HT Series Hydrostatic Test Unit is designed to offer a robust, dependable, and versatile machine to operators around the world. Standard working pressures range from 7,500 to 20,000 psi (500 to 1400 bar) at 125 hp.

The 3000HT is engineered for accurate hydrostatic testing in any environment. As demand for oil and gas continues to increase, customers require reliable, high-performance equipment backed by strong parts and service support. The Jetstream 3000HT delivers.

Mounted on a heavy-duty, galvanized skid with integrated fluid containment, this rugged, versatile unit features a choice of Tier 3 or Tier 4i diesel engine, high capacity water tank, Jetstream HTV test valve and the dependable UNx™ system that gives operators the flexibility to meet the various exploration, drilling, and production needs of the oil and gas market.

KEY BENEFITS

- Heavy-duty galvanized skid
- Jetstream HTV pressure control valve
- 10,000 psi hydraulic pump
- Integrated fluid containment system
- Operator control station
- 4-point lifting frame
- High-capacity water tank

PERFORMANCE SPECIFICATIONS

- Maximum Power: 150 hp (112 kW)
- Maximum Operating Pressure: 20,000 psi (1400 bar)
- Minimum Operating Pressure: 7,500 psi (500 bar)

COMMON CONFIGURATIONS

ENGINE/MOTOR MFG. (SPECIFY IF TIER 4 FINAL OR INTERIM)	MOTOR/ENGINE POWER		DIMENSIONS (L X W X H) (IN)	TOTAL WEIGHT (EMPTY)	
	hp	kW		lb	kg
John Deere T4I	125	93	140 x 64 x 105	10,500 (with lifting frame and trailer)	4,762

*Weights and dimensions shown are for reference only and actuals will vary based on configuration.



BLASTER ACCESSORIES

CUSTOMIZING YOUR SOLUTION

Configure your water blaster for your specific needs using Jetstream's full line of options and accessories for your water blaster unit.

Some of our most popular options for water blasters* include:

- Lightweight (<10,000 lbs) configuration
- Low profile (82") height
- Stationary skid
- 6,000 to 40,000 psi conversion kits
- Remote shutdown system
- Regulator valve for shut-in applications
- Electric or hydraulic brakes
- Gooseneck trailer
- Spare tire package
- Diamond-plate protective fender tops
- Workbench and industrial strength vise
- Forklift pads
- Lifting frames
- Powder-coated or polished aluminum wheels
- Packing lube water recirculation package
- Charge pump**
- Engine enclosure
- Air compressor package
- Safety package w/fire extinguisher and grounding cable
- Fuel saving Hydro-Throttles
- Flood lights
- Hose rack
- Grease lube manifold
- Work bench
- Jetstream Hydrostatic Test Valve (HTV)
- Murphy Switch gauge
- Special application units (i.e., oil field test pumps)

*Diesel models only; contact your Jetstream sales representative to learn more about electric unit accessories.

**Standard on models equipped with 40,000 PSI fluid end.



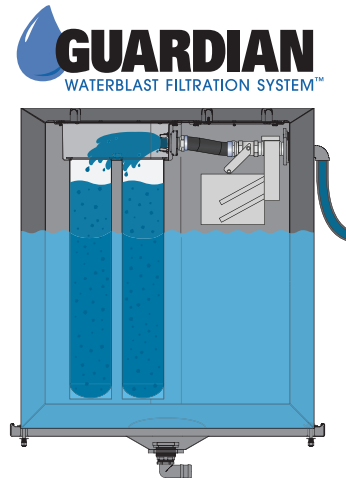
**THE POSSIBILITIES ARE
ALMOST ENDLESS!**

**TALK TO YOUR JETSTREAM SALES
REPRESENTATIVE TO CUSTOMIZE YOUR
WATER BLASTER TODAY.**

JETSTREAM'S GUARDIAN WATERBLAST FILTRATION SYSTEM™

It's a fact: a quality water supply is critical to waterblast pump component life. Now the Guardian Filter System™ helps ensure a clean water supply — even when operating conditions vary.

Within this large, rugged tank, dual filters protect your waterblast pumps and components from abrasive dirt and contaminants. These extra long filters also require fewer filter changes — allowing you more time to get the job done!



LARGE, 100-GALLON TANK

- Large reservoir eliminates entrained air that can damage pump components
- Lightweight and highly durable
- Large inlet plumbing

DUAL 40" FILTER BAGS

- 270% more filtration than standard #2 filter
- Require less frequent replacement

HINGED LID

- Easy access to filter bags

PURPOSE-BUILT FILL VALVE

- Handles widely varying supply pressures
- Durable construction to withstand the rigor of transport

LARGE FLUSHING PORT

- 2" port drains entire water tank in just 90 seconds

LOW-WATER SHUT DOWN

- Sealed float switch prevents pump cavitation

WATER BLASTER RENTALS

WATER BLASTING EQUIPMENT THAT'S EASY TO USE, CONVERT, AND RENT

Renting is the most cost-effective way to acquire a piece of equipment without incurring all the hidden costs that are attached to a purchase of equipment. Renting also allows you to “try before you buy,” and we offer a rent-to-own program that allows you to apply a portion of the water blast rental fees to your down payment. The bottom line is – if we have it, we rent it.

You can pick up the unit(s) you need, or we can deliver it right to your jobsite. Our rentals are ready to work the second they arrive at your job site and are backed up by our world-class customer support team and highly trained technicians who are committed to the success of your project.

Even more important, whether you simply rent or rent-to-own your water blasting equipment, our highly trained staff will go over each rental with you, taking you through the ins and outs of water blast operation, and making sure you understand safe water blasting practices. They're available 24/7 to answer questions, help plan the most efficient setup for a water blasting job, or to repair equipment.

You can also supplement your rental with additional water blast safety and skills training from our certified trainers.
<https://www.waterblast.com/rentals>

REFURBISHMENT PROGRAM

The Refurbishment Program increases the life of your water blasting system and improves performance by restoring worn equipment to a like-new condition.

TRADE-IN PROGRAM

The Trade-In Program provides customers an opportunity to have their old or current water blasting units traded in at a fair market value and applied towards the purchase of a new Jetstream water blaster.

BUY BACK PROGRAM

We pay you to sell back qualified equipment or help you replace that equipment with newer, cost-effective solutions.

SERVICE AND SUPPORT TAILORED TO YOU

If you need service and support for your equipment, Jetstream has you covered with the most experienced and customer-focused team in the industry.

In the United States, our products are serviced by FS Solutions. With 13 convenient locations, FS Solutions provides high-performance parts and accessories, Jetstream rentals, repair and rebuild, and safety training services. In Canada, Joe Johnson Equipment (JJE) is there to handle your every need.

Whatever your needs may be, Jetstream offers a full range of products, services, and customized solutions designed to keep your products and projects running smoothly, effectively, and efficiently!

TRAINING

To ensure customer satisfaction, Jetstream has developed the Right Start program, a four-step plan designed to provide the owners and operators of new Jetstream waterblast units with the knowledge and support needed to feel familiar, confident, and satisfied with Jetstream equipment and personnel.

TRANSPORTATION

Once a new water blaster is built and thoroughly tested, the Shipping Manager contacts the new owner to arrange for the unit's arrival to the right place at the right time.

TRAINING

All new water blasters include personal training by a Jetstream Technician. Training involves both classroom and “hands-on” instruction to make sure that each operator is thoroughly familiar with the design and function of the unit and accessories, enabling him to safely put the new equipment to optimal use.

FOLLOW-UP

Within 30 days of delivery, and again within 60 days, the Solutions Provider will call to answer any questions and ensure complete satisfaction.

TRUST

If any questions or problems ever arise, the Jetstream team is available and committed to providing prompt answers and solutions.

PREPARING YOU TO SUCCEED

Jetstream provides a wide range of training courses

PUMP OPERATION & MAINTENANCE: The course combines extensive hands-on training with classroom instruction and is recommended for maintenance personnel, operators, and supervisors.

FS SOLUTIONS SAFETY TRAINING: As the experts on waterblast and industrial vacuum equipment, FS Solutions makes OSHA training and compliance more convenient than ever through hands on courses developed by Gary Toothe, whose significant contributions and 25 years of experience are well-known in the waterblast and industrial vacuum industries.

ONLINE WITH FEDERAL SIGNAL ESG UNIVERSITY: FS Solutions offers interactive courses through our Federal Signal Environmental Solutions Group University on subjects ranging from operator skill and safety to advanced classes for supervisors and managers in water blasting and industrial vacuum technologies.



Streator, IL
(815) 672-6028

Toledo, OH
(888) 415-7368

New Brunswick, NJ
(732) 448-7830

Highland, IN
(219) 924-3180

Lexington, SC
(803) 996-0741

Leeds, AL
(800) 822-8785

Williston, ND
(701) 572-7421

La Porte, TX
(281) 674-8668

Gonzales, LA
(225) 647-0660

Midland, TX
(432) 563-4450

Salt Lake City, UT
(801) 808-4590

Long Beach, CA
(866) 515-9891

Lakewood, WA
(253) 584-0653

Jetstream has the most comprehensive products, service, rental, and training in the industry. Whether you are looking to purchase or rent water blasting equipment, or if you need service and support for your existing equipment, we've got you covered with the most experienced and customer-focused team in the industry.

In the United States, our products are serviced by FS Solutions. With 13 convenient locations, FS Solutions provides high-performance parts and accessories, Jetstream rentals, repair and rebuild, and safety training services. In Canada, Joe Johnson Equipment (JJE) is there to handle your every need.

Jetstream is a subsidiary of Federal Signal Corporation and has the financial strength, backing, and network of distributors around the world to support any customer.

INTERNATIONAL DISTRIBUTORS

Orbitec
Santiago, Chile

Powerjet Rentals
Glasgow, Scotland

Asia Waterjet
Dubai, UAE

Total Blasting
Johannesburg, South Africa

Metco
Adelaide, Australia

FS Asia
Shanghai, China

Asia Waterjet
Singapore

JETSTREAM OF HOUSTON

5905 THOMAS ROAD
HOUSTON, TEXAS 77041

(832) 590-1300

(800) 231-8192

 **Solutions®**

