

Jetstream[®]
Subsidiary of Federal Signal Corporation

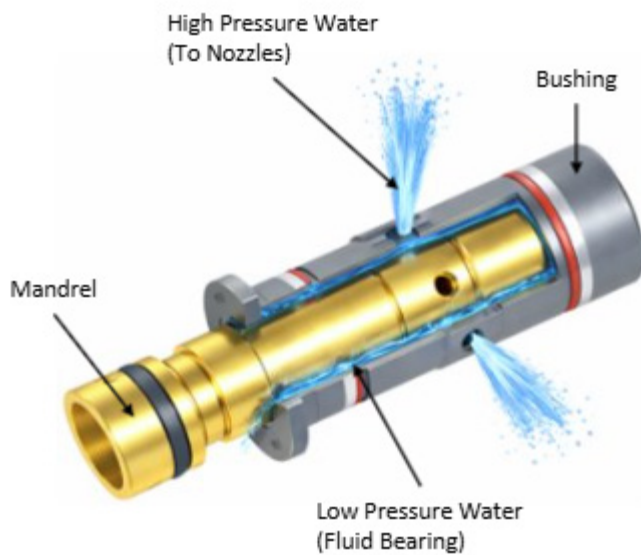


**SIGNATURE
TOOLS**

Jetstream DNA

The “Jetstream DNA” is to design products with the customer in mind. Jetstream Signature Tools feature water bearing technology, a magnetic braking system, and quick change rebuild kits that make them the easiest to maintain and rebuild in the field.

WATER BEARING (20K SIGNATURE TOOLS)



- No physical bearings
- Tool spins on thin layer of water between mandrel and bushing

MAGNETIC BRAKING SYSTEM

- When magnets spin past a copper ring, rotation will be slowed using magnetic resistance instead of friction
- No contact means smooth, quiet braking with almost no wear or maintenance. NO OIL speed control



Quick Change Rebuild Kits

Jetstream Signature Tools feature quick change rebuild kits that are fully field repairable in under 5 minutes. With no daily maintenance or special tools required, repairs are simple and downtime is minimized. Similar designs across the product ranges - if you can rebuild one, you can rebuild them all.

20K REBUILD KITS

- 20K Signature Tools with water bearing technology feature a rebuild kit consisting of only 3 components. Fewer components means a simpler rebuild.



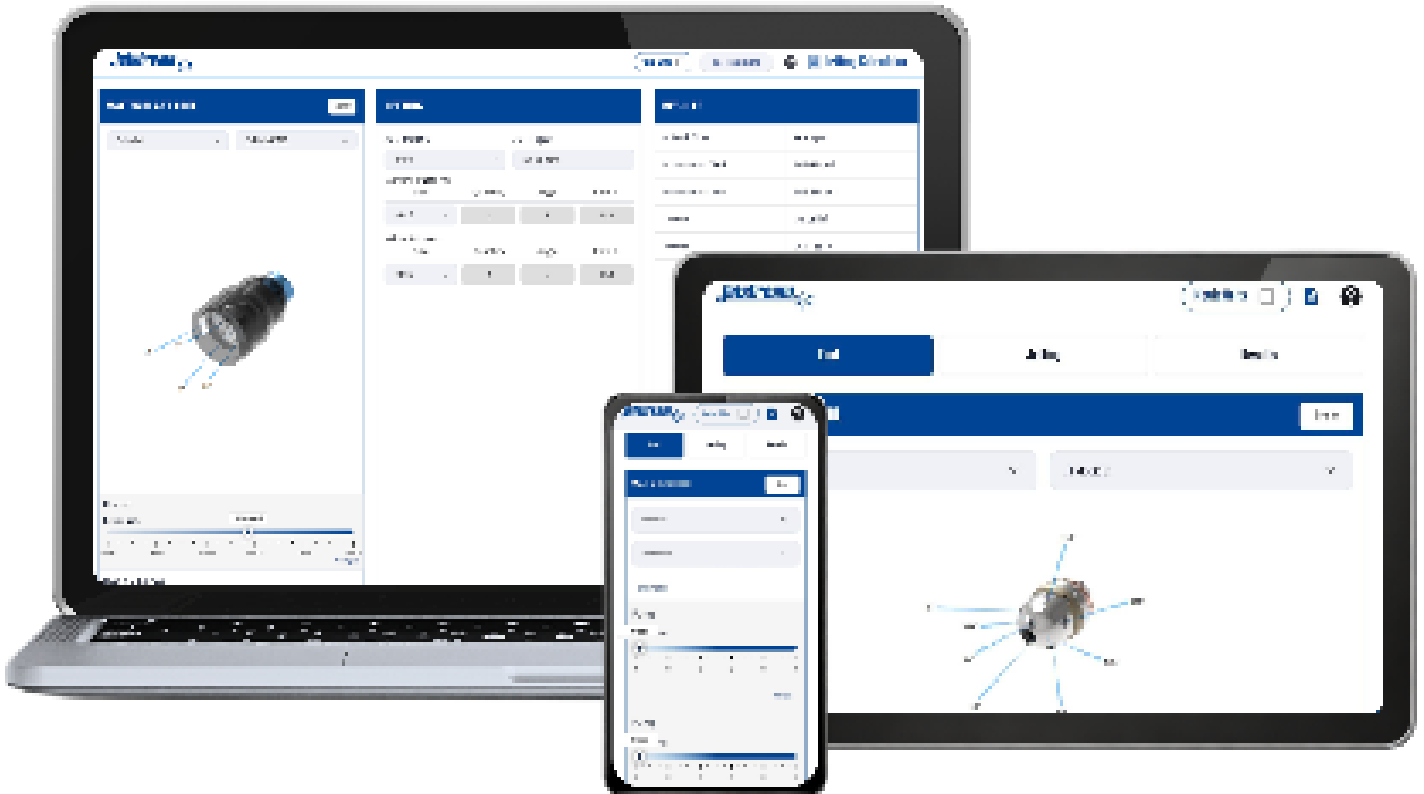
40K REBUILD KITS

- 40K Signature Tools utilize a patented seal cartridge for quick and easy seal change.
- Simply pop out the old cartridge and pop in the new cartridge and you are up and running again.



Jetting Calculator

Use the Jetstream Jetting Calculator to set up your Signature Tool and maximize your productivity.



Download The App or View Online!

- Jetting Calculator App available for mobile devices
- QR Codes for Apple App Store and Google Play
- Provides offline access - no signal or Wi-Fi needed
- Includes access to Product Instructions, Catalogs, and Manuals!

GOOGLE PLAY



APPLE



PERFORMANCE UNDER PRESSURE.

That's what you get with everything we offer. Jetstream of Houston is the leading designer, manufacturer, and provider of innovative high-pressure water blasting products and solutions for a wide range of applications, including industrial cleaning, surface preparation, hydro-demolition, and abrasive waterjet cutting. Since 1976, we have provided our customers with safe, sure, and simple solutions that get the job done. Innovative designs, advanced manufacturing processes, and unique coating technologies create distinct Jetstream features that include: easily replaceable valve cartridges and internal components, oil-less water bearings, and magnetic braking for rotating tools, and easily interchangeable fluid ends for pumps. With simple yet rugged construction and color-coded Visual Safety System markings, our products deliver exceptional performance, maximum safety and productivity, and minimal downtime on every job.

WHEN YOU NEED US, WE'LL BE THERE.

Jetstream has the most comprehensive products, services, rental, and training in the industry. Whether you are looking to purchase or rent water blasting equipment, or if you need service and support for your existing equipment, we've got you covered with the most experienced and customer-focused team in the industry. In the United States, our products are serviced by FS Solutions. With 13 convenient locations, FS Solutions provides high-performance parts and accessories, Jetstream rentals, repair and rebuild, and safety training services. Worldwide, our distribution network is there to handle your every need. Jetstream is a subsidiary of Federal Signal Corporation and has the financial strength, backing, and network of global distributors to support any customer.



SURFACE PREPARATION

Orbi-Jet X22

The Orbi-Jet™ X22 out performs traditional single jet and fan tip nozzles with a wide cleaning path that perfectly tackles difficult surfaces. Rated up to 22,000 psi, the rugged, self-powered tool utilizes up to four compound angle, hard-hitting, replaceable nozzles. The tool rotates in multiple 360° user-selectable patterns to quickly and effectively scarify surfaces or remove coatings, such as rust, paint, concrete, or other tough adherents.

KEY FEATURES:

- Provides the widest cleaning path in the industry
- Straight-pattern nozzles produce concentrated streams for more cleaning power than a fan tip
- 3-tools-in-1 nozzle: two nozzles for a narrow path, two nozzles for a wide path or all four nozzles for a complete clean
- Automated cleaning option available by adding the Orbi-Jet™ nozzle on a lance machine
- **NEW!** Low Flow Orbi-Jet X22 available that can reach flows as low as 2.5gpm at 20,000 PSI

INDUSTRY APPLICATIONS:

- All surface preparation
- Automotive and aviation
- Concrete and hydro-demolition
- Pulp and Paper
- Tank, tote, and vessel cleaning

TWO-MINUTE IN-THE-FIELD OVERHAUL

Rebuild Kit provides easy in-field repair using standard wrenches.
NO SPECIAL TOOLS REQUIRED!

TWIS-LOK™ LIGHTWEIGHT SHROUD

Protects tools and provides safe water displacement



WATER BEARING

Self-rotating tool spins on a water bearing.
NO PHYSICAL BEARINGS NEEDED!

MAGNETIC BRAKING SYSTEM

Controls rotational speed for maximum cleaning and minimal wear.
NO OIL OR FRICTION BRAKE!

MODEL	NOZZLE PART NUMBER	INLET CONNECTION	SPEED RANGE	DIAMETER (LESS SHROUD)		ASSEMBLY LENGTH		ASSEMBLY WEIGHT		MAX. FLOW RATE		MAX. OPERATING PRESSURE	
				IN	MM	IN	MM	LBS	KG	GPM	LPM	PSI	BAR
STANDARD	63230	9/16" MP Female	RPM	2.0	51	3.7	94	2.1	0.95	18	68	22K	1500
LOW FLOW	72296												

KITS & ACCESSORIES

Premium Kits and Starter Kits are available for full product tools. All kits include a durable waterproof case, Signature Tool, assembly tools, and product documentation.

Premium Kits includes everything in the Starter Kit plus a Rebuild Kit (spare parts). With the included spare parts, a Premium kit provides a **complete rebuild of the tool.**



REBUILD KIT - 52305



Rebuild kit allows for a two-minute complete overhaul of wear components right in the field.

TOOL KITS

DESCRIPTION	Orbi-Jet X22 PREMIUM KIT (PN 63305)	Orbi-Jet X22 STARTER KIT (PN 63392)	Orbi-Jet X22 15K KIT (PN 63306)	LF Orbi-Jet X22 PREMIUM KIT (PN 72298)	LF Orbi-Jet X22 Starter Kit (PN 72297)
Orbi-Jet X22 (PN 63230)	✓	✓	✓		
LF Orbi-Jet X22 (PN 72296)				✓	✓
20K Rebuild Kit	✓			✓	
O-Ring Maintenance Kit	✓	✓	✓	✓	✓
15K Adapter (3/8 NPT)	✓		✓	✓	
Nozzle Container	✓	✓	✓	✓	✓
Assembly Tools	✓	✓	✓	✓	✓

ACCESSORIES

Nozzle Extensions

Extensions are installed into the Orbi-Jet™ X22 tool to provide a wider cleaning pattern and serve as flow straighteners, further reducing turbulence, for more aggressive waterjets. Sold Individually.



SURFACE PREPARATION

MagJet X40 Gen II

The MagJet X40™ cleans thick and hard-to-remove surfaces of paint, coatings, corrosion, and more with either two or four straight-pattern, hard-hitting, replaceable sapphire nozzles, rated up to 43,500 psi. Gen II introduces a higher rotation speed compared to Gen 1, as well as expanded selection of heads for optimized cleaning outcomes.

KEY FEATURES:

- Straight-pattern nozzles produce concentrated streams for more cleaning power than a fan tip
- Rebuild kit allows two-minute replacement of wear components in the field
- Multiple head assemblies are available so that the desired rotation speed can be maintained across a wide range of flow rates

INDUSTRY APPLICATIONS:

- All surface preparation
- Automotive and aviation
- Concrete and hydro-demolition
- Pulp and Paper
- Tank, tote, and vessel cleaning



TWO-MINUTE IN-THE-FIELD OVERHAUL
 Patented Seal Cartridge for extended wear life at extreme pressure
 NO SPECIAL TOOLS REQUIRED!

MULTIPLE HEAD ASSEMBLIES AVAILABLE
 Maximize rotation speed at desired flow rates

MAGNETIC BRAKING SYSTEM
 Controls rotational speed for maximum cleaning and minimal wear.
 NO OIL OR FRICTION BRAKE!

TOOL PART NUMBER	INLET CONNECTION*	SPEED RANGE	DIAMETER		ASSEMBLY LENGTH		ASSEMBLY WEIGHT		MAX. FLOW RATE		MAX. OPERATING PRESSURE	
			IN	MM	IN	MM	LBS	KG	GPM	LPM	PSI	BAR
70458	9/16" HP Female	1000-3000	2.3	57	9.4	238	4.0	1.8	12	45	43,500	3,000

KITS & ACCESSORIES



Premium Kits and Dual Head Premium Kits are available for full product tools. All kits include a durable waterproof case, Signature Tool, assembly tools, and product documentation. All 40K Kits are Premium and include and Rebuild Kit (seal cartridge) and Cartridge Seal kit. The Rebuild Kit and Cartridge Seal kit provide the ability to **rebuild the tool twice**.

Deal Head Premium Kits include two head assemblies for speed adjustment and a larger operational flow range.

REBUILD KIT - 57911



The patented seal cartridge facilitates quick seal changes without special tools or small parts that are easy to lose.

TOOL KITS

DESCRIPTION	PREMIUM							DUAL HEAD PREMIUM		
	T1 (PN 70602)	T2 (PN 70603)	T3 (PN 70604)	T4 (PN 70605)	T5 (PN 70606)	T6 (PN 70607)	T7 (PN 70608)	T1/T3 (PN 70609)	T3/T5 (PN 70610)	T4/T6 (PN 70611)
MagJet X40 Tool	✓	✓	✓	✓	✓	✓	✓	✓	✓	✓
T1 Head Assembly	✓							✓		
T2 Head Assembly		✓								
T3 Head Assembly			✓					✓	✓	
T4 Head Assembly				✓						✓
T5 Head Assembly					✓				✓	
T6 Head Assembly						✓				✓
T7 Head Assembly							✓			
Rebuild Kit	✓	✓	✓	✓	✓	✓	✓	✓	✓	✓
Seal Kit	✓	✓	✓	✓	✓	✓	✓	✓	✓	✓

ACCESSORIES

Head Assemblies - Multiple head assemblies are available so that the desired rotation speed can be maintained across a wide range of flow rates. Includes nozzle shield.

Aluminum External Guard (67082) - Provides additional protection to reduce wear of the head assembly and body.

Seal Kit (65445) - Option to replace only the seal portion of the seal cartridge.



DESIGNATION	PART NO.	FLOW RANGE (GPM @40K)
T1	66881	6.5 - 11.6
T2	66261	4.9 - 8.8
T3	64919	4.2 - 7.0
T4	65803	3.5 - 5.7
T5	64920	3.1 - 5.1
T6	65804	2.6 - 4.6
T7	66259	2.3 - 4.1

SURFACE PREPARATION

FXG2 Tornado Gun

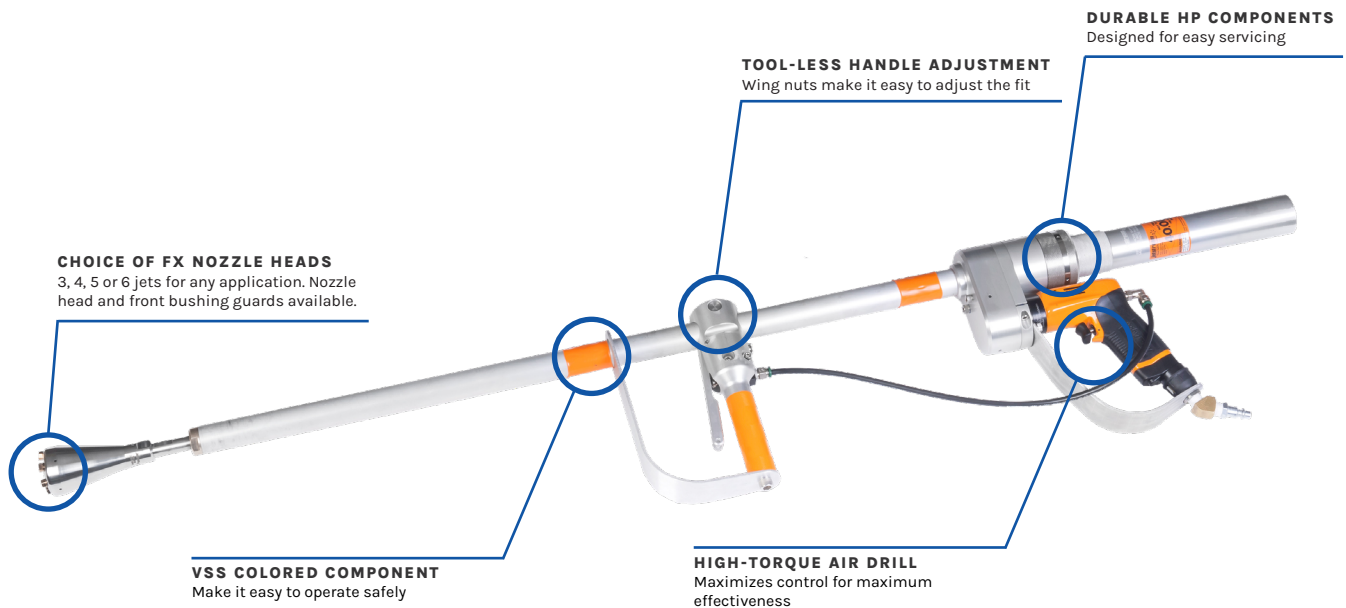
The **FXG2 Tornado Gun**, used in conjunction with the Jetstream Multi-Mode or Unloader style tumble box, is a dual trigger, air-powered rotating barrel waterblast control gun. Maximizing safety, serviceability, and durability, FXG2 Tornado Guns are designed to provide the highest level of productivity.

KEY FEATURES:

- High-torque air drill
- Large bearings with extended HP seal life of 40-60 hours
- No-grease barrel bushings
- Easy to replace HP seal bushing design
- Uses FX nozzle heads with 2, 3, 4, 5, or 6 jets. Available nozzle head and front bushing guards
- Use with Sapphire UPHX/UHPXi Series or synthetic diamond UHPXD Series nozzles
- Optional lightweight shoulder stocks
- Tool-less wing nut handle adjustment
- Serialized assemblies
- VSS colored components for safety

INDUSTRY APPLICATIONS:

- All surface preparation
- Automotive and aviation
- Concrete and hydro-demolition
- Pulp and Paper
- Tank, tote, and vessel cleaning



KITS & ACCESSORIES

FXG2 TORNADO GUN PACKAGES

Two optional packages are available:

Part No. 66938 includes a 36" front barrel FXG2 gun, a Multi-Mode valve, and a 25 foot hose

Part No. 66939 includes a 48" front barrel FXG2 gun, a Multi-Mode valve, and a 25 foot hose



MULTI-MODE VALVE (FRONT VIEW)

REBUILD CARTRIDGE - 54014

FOR MULTI-MODE VALVE



Jetstream's replacement cartridge contains fewer parts than competitors' and allows for a complete valve rebuild in just 30-seconds.

PN (GUN ONLY)	BARREL LENGTH		WEIGHT		INLET CONNECTION*	NOZZLE HEAD CONNECTION	ROTATIONAL SPEED	AIR REQUIREMENTS				MAX. FLOW		MAX. OPERATING PRESSURE	
	IN	MM	LBS	KG				MIN. INLET PRESSURE	MIN. AIR CONSUMPTION		GPM	LPM	PSI	BAR	
							RPM	PSI	BAR	CFM	L/S				
66210	48.0	1219	13.8	6.3	9/16" Type M	9/16" Button Seal	1500-2500	90	6.2	20	9.4	7	26.5	40,000	2,758
66211	36.0	914	13.0	5.9											

ACCESSORIES

Tornado FX Nozzle Heads
Includes Nozzle Sheild



F2	68282
F3	53970
F4	53971
F5	64448
F6	64449

Adjustable Shoulder Stocks



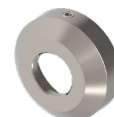
Tornado Nozzle Head - Small Diameter
67434



Nozzle Holder Guard - 64450



Front Bushing Guard - 66343



PIPE CLEANING

J-Force

The 15K-20K **J-Force™** series tools are self-powered rotating tools designed to navigate and clean pipes with bends with ease. The durable tools have front, side, and rear jets that clean and clear blockages and provide thrust to propel the tools down the pipe for maximum cleaning power and minimum wear. Water provides the rotational motion and creates the bearing on which the nozzles spin. There are no oil or ball bearings to replace!

KEY FEATURES:

2-Inch

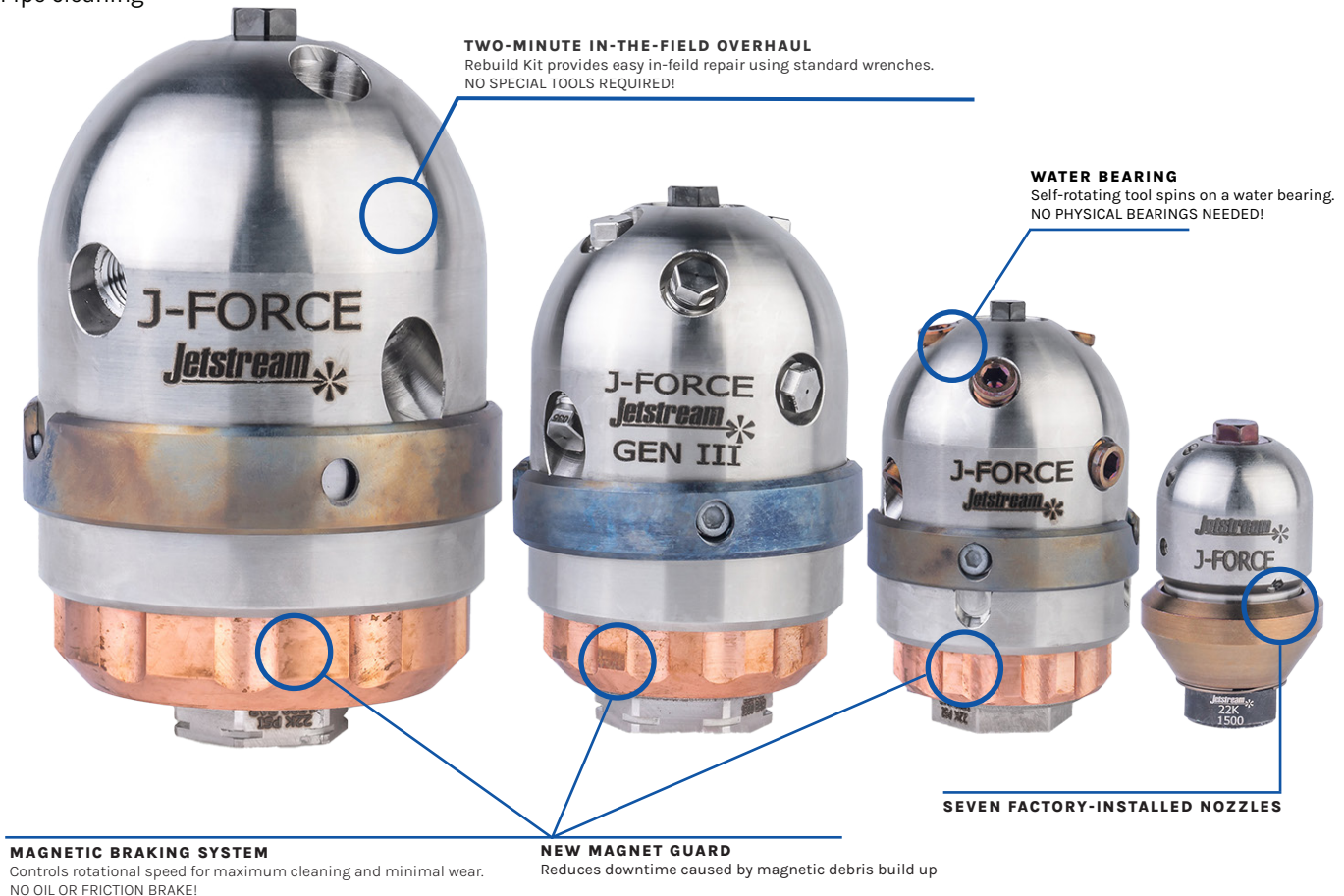
- Equipped with three forward-facing ports at 15°/30°/45°, two radial ports at 90°, and two rearward-facing ports at 132°
- Seven nozzles are factory installed and must be purchased separately at the time of order
- High efficiency design requires no rebuild kit

3-Inch GEN II | 4-Inch Gen IV | 6-Inch III

- Equipped with two forward-facing ports at 10°, two forward-facing ports at 45°, two radial ports at 100°, and two rearward-facing ports at 135°
- Field repairable in less than 2 minutes!

INDUSTRY APPLICATIONS:

- Drain line cleaning
- Pipe cleaning



KITS & ACCESSORIES

Premium Kits and Starter Kits are available for full product tools. All kits include a durable waterproof case, Signature Tool, assembly tools, and product documentation.

Premium Kits includes everything in the Starter Kit plus a Rebuild Kit (spare parts). With the included spare parts, a Premium kit provides a **complete rebuild of the tool**.

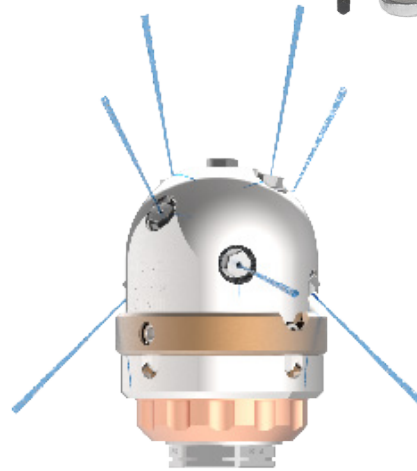
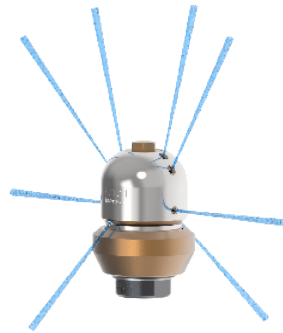
Contact a Jetstream representative for tool or kit part numbers. 2" J-Force not available in kit form.

REBUILD KIT



Rebuild kit allows for a two-minute complete overhaul of wear components right in the field.

- 3" - 67870
- 4" - 66248
- 6" - 65388



TOOL GENERATIONS	MODEL	INLET CONNECTIONS	SPEED RANGE	DIAMETER		ASSEMBLY LENGTH		ASSEMBLY WEIGHT		MAX. FLOW RATE		MAX. OPERATING PRESSURE	
				RPM	IN	MM	IN	MM	LBS	KG	GPM	LPM	PSI
2"	JF2X15	1/4" BSPP, 1/4" BSPP	1000-2000	1.36	35	2.02	51	.5	1.1	20	75	15,000	1034
	JF2X22	3/8" or 9/16" MP LH, RH										22,000	1516
3" Gen II	JF3X15	3/8" NPT	1000-2000	1.98	50	2.87	73	1.45	0.66	30	114	15,000	1034
	JF3X22	3/8" or 9/16" MP Tube LH, RH										22,000	1516
4" Gen IV	JF4X15	3/8" NPT	1000-2000	2.75	70	3.85	98	3.85	1.75	40	150	15,000	1034
	JF4X22	3/4" Type M, 9/16" MP LH, RH 1/2 BSPP Male, M24 Male										22,000	1516
6" Gen III	JF6X15	1/2" NPT	800-1000	3.75	95	5.34	136	11.0	5.0	60	226	15,000	1034
	JF6X22	M24, 9/16" MP										22,000	1516

PIPE CLEANING

40K J-Force

The **40K J-Force™** is a self-powered rotating nozzle designed to clean 4" pipes with up to 90° bends. The 40K J-Force™ has multiple jet angles that clear blockages, clean, and provide thrust to propel the tool. An eddy-current braking system controls rotation speed for maximum cleaning power and minimum wear. A rotary seal is housed in an innovative, patented cartridge design which allows quick rebuilds in the field. The 40K J-Force™ is rated for 3,000 bar (43,511 psi) maximum working pressure.

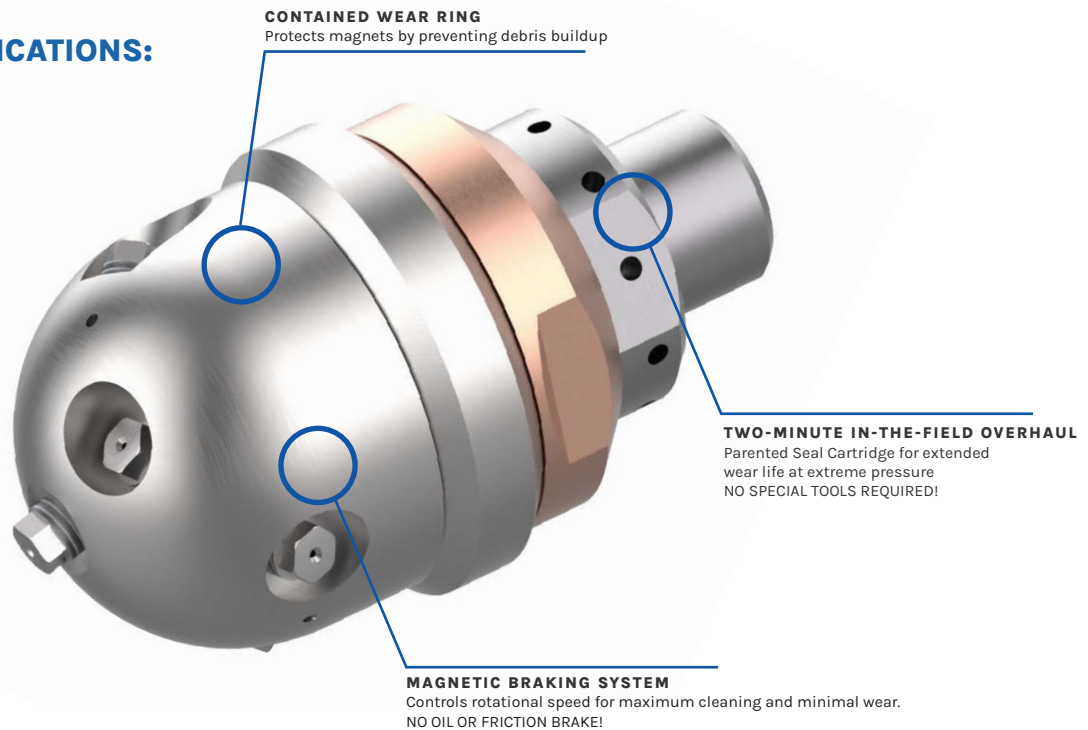
COMING SOON 3" 40K J-Force!

KEY FEATURES:

- Completely field repairable in under two minutes with a patented replaceable seal cartridge.
- Industry-best speed range for maximum versatility.
- Compatible with industry-standard automation systems. Fine-tune for your job with Universal, Puller, and Unplugging nozzle configuration for optimum performance.
- A zero-maintenance magnetic braking system controls rotation speed for maximum cleaning power and minimum wear. Requires no oil or grease for lubrication or braking.

INDUSTRY APPLICATIONS:

- Drain line cleaning
- Pipe cleaning



TOOL ASSEMBLY PN	INLET CONNECTIONS	SPEED RANGE	DIAMETER		ASSEMBLY LENGTH		ASSEMBLY WEIGHT		MAX. FLOW RATE		MAX. OPERATING PRESSURE	
			IN	MM	IN	MM	LBS	KG	GPM	LPM	PSI	BAR
70490	9/16" Type M	150-1000	2.4	70	4.6	117	3.81	8.40	12	45	43,500	3,000
68322	3/8" HP											

KITS & ACCESSORIES

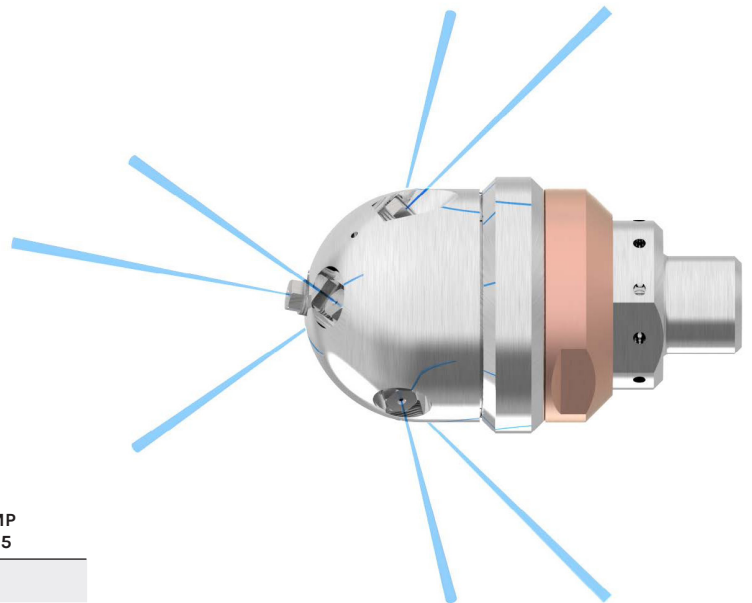
Premium Kits are available for full product tools. All kits include a durable waterproof case, Signature Tool, assembly tools, and product documentation. All 40K Kits and Premium and include a Rebuild Kit (seal cartridge) and Cartridge Seal Kit. The Rebuild Kit and Cartridge Seal Kit provide the ability to rebuild the tool twice.



REBUILD KIT - 68323



Rebuild kit allows for a five-minute complete overhaul of wear components right in the field.



PREMIUM TOOL KITS

DESCRIPTION	9/16 TYPE M 70564	3/8 MP 70565
40K 4" J-Force Tool	✓	✓
Rebuild Kit	✓	✓
Seal Kit	✓	✓
Assembly Tools	✓	✓

COMING SOON! 40K 3" J-FORCE

PIPE CLEANING

RotoMag X22

The **RotoMag X22** and **RotoMag X22N** are self-powered rotating tools designed for cleaning stacks, sewer lines, drains, tanks, online boilers, and other large diameter pipes.

KEY FEATURES:

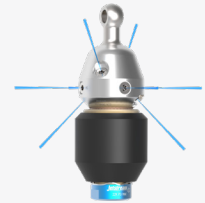
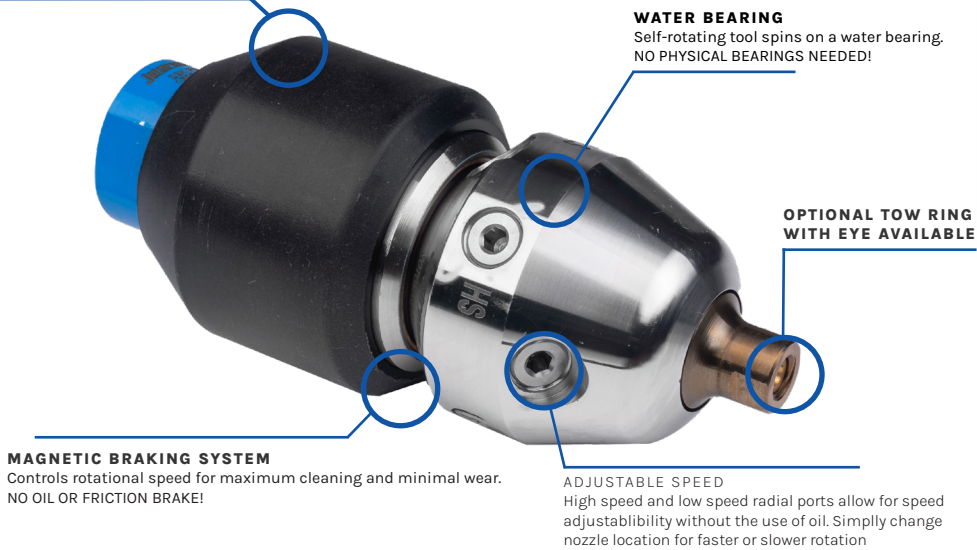
- Up to eight flush-mounted nozzle inserts provide a low profile for cleaning small pipes while extensions are available for larger pipes, allowing the RotoMag to clean pipes ranging from 3-1/2 to 60 inches in diameter
- Includes six nozzle port plugs
- The RotoMag X22 uses Tungsten Carbide RM Series nozzles, Sapphire RMS Series nozzles, or Synthetic Diamond RMD Series nozzles. The RotoMag X22N uses Tungsten Carbide P4TC Series or Synthetic Diamond JS4FD Series nozzles.

INDUSTRY APPLICATIONS:

- Drain and sewer lines
- Pipe cleaning
- Tank, tote, and vessel cleaning

TWO-MINUTE IN-THE-FIELD OVERHAUL

Rebuild Kit provides easy in-field repair using standard wrenches.
NO SPECIAL TOOLS REQUIRED!



8 Port



6 Port



4 Port



2 Port

MODEL	PART NO.	INLET CONNECTION	NOZZLE SIZE	SPEED RANGE		DIAMETER		ASSEMBLY LENGTH		ASSEMBLY WEIGHT		MAX. FLOW RATE		MAX. OPERATING PRESSURE	
				RPM		IN	MM	IN	MM	LBS	KG	GPM	LPM	PSI	BAR
X22	63945	3/4" MP Female	1/2"-28 UNEF	30-600	2.75	70	7.38	187	6	2.7	80	303	22,500	1551	
X22N	65095		1/4" NPT Male												

KITS & ACCESSORIES

Premium Kits and Starter Kits are available for full product tools. All kits include a durable waterproof case, Signature Tool, assembly tools, and product documentation.

Premium Kits includes everything in the Starter Kit plus a Rebuild Kit (spare parts). With the included spare parts, a Premium kit provides a **complete rebuild of the tool**.



REBUILD KIT - 54535



Rebuild kit allows for a two-minute complete overhaul of wear components right in the field.

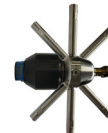
TOOL KITS

DESCRIPTION	X22 PREMIUM (PN 63813)	X22 STARTER (PN 63811)	X22N PREMIUM (PN 65130)	X22N STARTER (PN 65129)
RotoMag X22 Tool	✓	✓		
RotoMag X22N Tool			✓	✓
Rebuild Kit	✓		✓	
O-Ring Maintenance Kit	✓	✓	✓	✓
15K Adapter (3/4 NPT)	✓	✓	✓	✓
Tow Ring	✓		✓	
Assembly Tools	✓	✓	✓	✓

ACCESSORIES

Nozzle Extensions

Used to put nozzles closer to the inner surface of large pipes for more effective cleaning. Available in two connection types and three lengths and can be coupled.



Tow Rings

Eye-less tow ring standard with all RotoMag assemblies. Optional tow ring with eye included in all Premium Kits.



Centralizers

Support the tool while providing a controlled, even cleaning along with damage protection. Available in skid, cage, and scissor styles.



PIPE CLEANING

High Flow RotoMag

The **High Flow RotoMag X22** is a self-powered rotating tool designed for cleaning stacks, sewer lines, drains, tanks, online boilers, and other large diameter pipes and vessels. Offers up to 2.5 times increased flow rate compared to the RotomagX22 with all the same innovative design features.

KEY FEATURES:

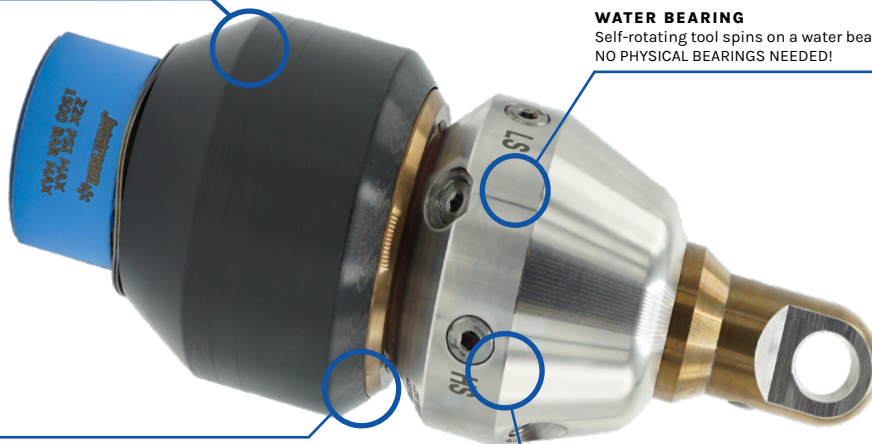
- Up to eight flush-mounted nozzle inserts provide a low profile for cleaning small pipes while extensions are available for larger pipes, allowing the RotoMag to clean pipes ranging from 4 1/2 to 150" inches in diameter
- Includes six nozzle port plugs
- The High Flow RotoMag X22 uses Tungsten Carbide RM Series nozzles, Sapphire RMS Series nozzles, or Synthetic Diamond RMD Series nozzles.

INDUSTRY APPLICATIONS:

- Drain and sewer lines
- Pipe cleaning
- Tank, tote, and vessel cleaning

TWO-MINUTE IN-THE-FIELD OVERHAUL

Rebuild Kit provides easy in-field repair using standard wrenches.
NO SPECIAL TOOLS REQUIRED!



MAGNETIC BRAKING SYSTEM

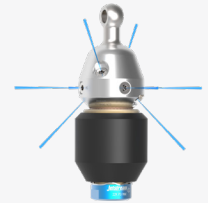
Controls rotational speed for maximum cleaning and minimal wear.
NO OIL OR FRICTION BRAKE!

WATER BEARING

Self-rotating tool spins on a water bearing.
NO PHYSICAL BEARINGS NEEDED!

ADJUSTABLE SPEED

High speed and low speed radial ports allow for speed adjustability without the use of oil. Simply change nozzle location for faster or slower rotation



8 Port



6 Port



4 Port



2 Port

MODEL	PART NO.	INLET CONNECTION	NOZZLE SIZE	SPEED RANGE		DIAMETER		ASSEMBLY LENGTH		ASSEMBLY WEIGHT		MAX. FLOW RATE		MAX. OPERATING PRESSURE	
				RPM		IN	MM	IN	MM	LBS	KG	GPM	LPM	PSI	BAR
X22HF	67494	1" MP Female	1/2"-28 UNEF	30-450		3.89	100	9.72	247	15	6.8	200	757	22,500	1550

KITS & ACCESSORIES

Premium Kits and Starter Kits are available for full product tools. All kits include a durable waterproof case, Signature Tool, assembly tools, and product documentation.

Premium Kits includes everything in the Starter Kit plus a Rebuild Kit (spare parts). With the included spare parts, a Premium kit provides a **complete rebuild of the tool.**



REBUILD KIT - 70535



Rebuild kit allows for a two-minute complete overhaul of wear components right in the field.

TOOL KITS

DESCRIPTION	HIGH FLOW PREMIUM (PN 70534)	HIGH FLOW STARTER (PN 70533)
High Flow RotoMag Tool	✓	✓
Rebuild Kit	✓	
10K Adapter (1" NPT)	✓	✓
Assembly Tools	✓	✓

ACCESSORIES

Nozzle Extensions

Used to put nozzles closer to the inner surface of large pipes for more effective cleaning. Available in two connection types and three lengths and can be coupled.

Centralizers

Support the tool while providing a controlled, even cleaning along with damage protection. Available in skid, cage, and scissor styles.



PIPE CLEANING

Swivel X15 & X22

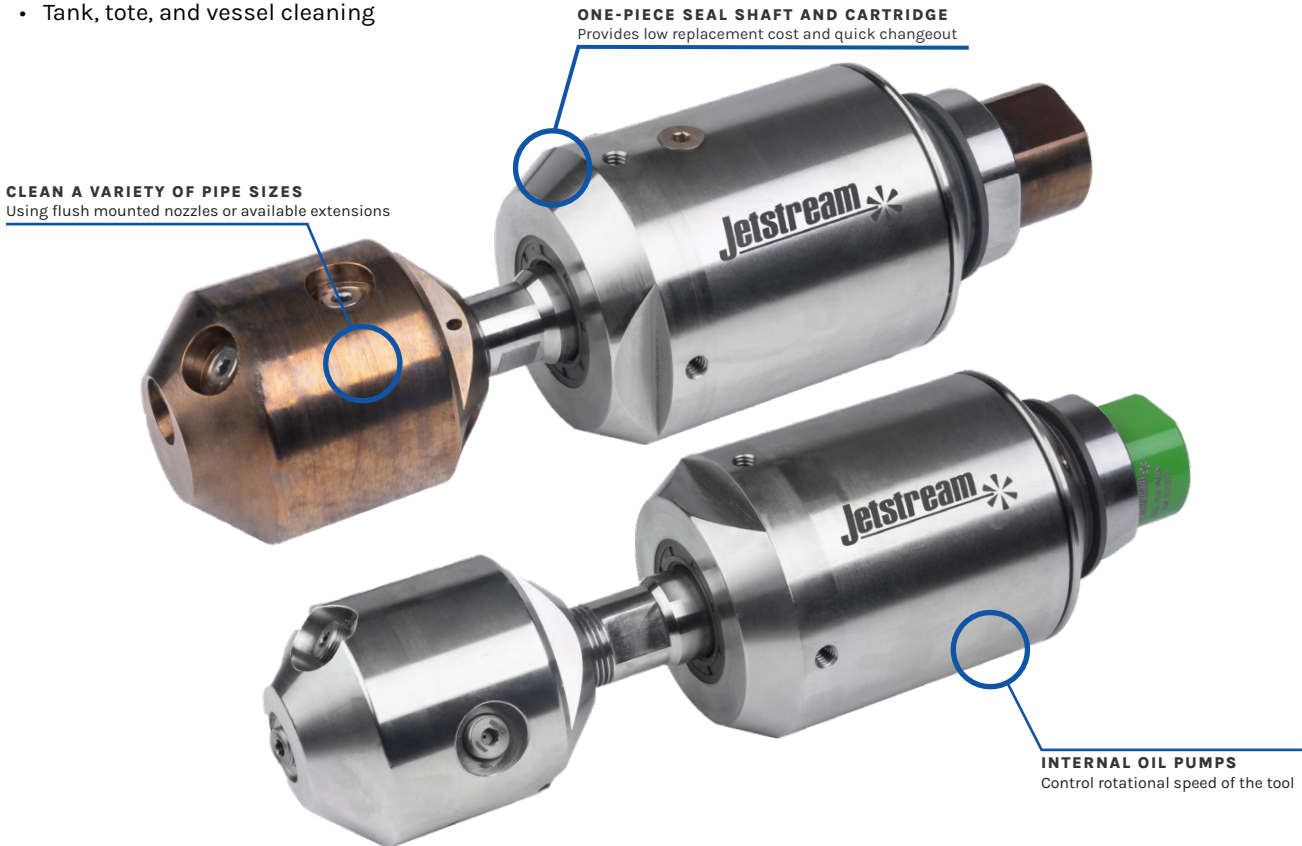
The **Swivel X15** and **Swivel X22** are self-powered, 360° rotating swivel tools designed for cleaning medium to large diameter pipes.

KEY FEATURES:

- Rotational speed of the nozzle head is controlled by the internal oil pump assembly on the swivel
- Stainless steel swivel and head with flows up to 50 gpm (189.2 lpm). Flow rate calculated by the multiplying number of nozzles by the flow rate
- Swivel X15 uses up to six flush-mounted P4TC or standard HHTC0 nozzles. Swivel X22 uses two, four, six, or seven Tungsten Carbide RM Series nozzles, Sapphire RMS Series nozzles, or Synthetic Diamond RMD Series nozzles
- Typical seal and oil life over 100 hours
- Low seal replacement cost and quick change, with the seal shaft and cartridge all in one piece
- Speed adjustment without oil change or spillage

INDUSTRY APPLICATIONS:

- Pipe cleaning
- Tank, tote, and vessel cleaning



MODEL	INLET CONNECTION*	SPEED RANGE	DIAMETER		ASSEMBLY LENGTH		ASSEMBLY WEIGHT		MAX. FLOW RATE		MAX. OPERATING PRESSURE	
			IN	MM	IN	MM	LBS	KG	GPM	LPM	PSI	BAR
Swivel X15	3/4" NPT Female	50-1000 RPM	3-5/8"	92	9.5	241	11	5	50	189	15,000	1034
Swivel X22	3/4" MP Female										22,000	1516

KITS & ACCESSORIES

Premium Kits and Starter Kits are available for full product tools. All kits include a durable waterproof case, the Product Instructions, and the Quick Start Guide.

Premium Kits also include a rebuild kit with the tools required to completely rebuild the tool quickly and easily.

Oil Kit (PN. 64180) and Rebuild Kit (PN. 64247) are available for full servicing tools. Each kit contains one of the available nozzle holder configurations.



SWIVEL X15 TOOL KITS

DESCRIPTION	6 PORT, P4,R22 STARTER	7 PORT, P4,R22 STARTER
Swivel Assembly	✓	✓
Nozzle Holder	✓	✓
Nozzle Plug	✓	✓
Tow Ring	✓	

NOTE: 3/4" ORS nozzle holders require some form of extensions to allow 1/4" NPT nozzles. Tool assemblies come with two 2" nozzle extensions (PN 65456-02).

SWIVEL X22 TOOL KITS

DESCRIPTION	6 PORT, RM,R22 STARTER	7 PORT, RM,R22 STARTER
Swivel X22 Assembly	65033-6RM22	65033-7RM22
Seal Assembly	✓	✓
Oil Kit	✓	✓
Plastic Tubing	✓	✓
Hose Barb	✓	✓
Hose Barb	✓	✓
Syringe	✓	✓

ACCESSORIES

Nozzle Holders

Six or seven port styles for all applications.



Nozzle Extensions



Tow Ring



Centralizers

Available in skid, cage, and scissor styles.

PIPE CLEANING

MagDart X40 Gen II

The **MagDart X40™** Gen II is a self-powered rotating nozzle that offers a polisher or unplugging head for cleaning a wide range of process lines. The tool rotates in a 360° pattern to provide maximum surface coverage and superior cleaning.

KEY FEATURES:

- Straight-pattern nozzles produce concentrated streams for more cleaning power than a fan tip
- Multiple nozzle holders are available for the desired rotation speed to be maintained across a wide range of flow rates
- Rebuild kit allows two-minute complete overhaul of wear components right in the field
- Use with Sapphire UHPX/UHPXi Series or Synthetic Diamond UHPXD Series nozzles

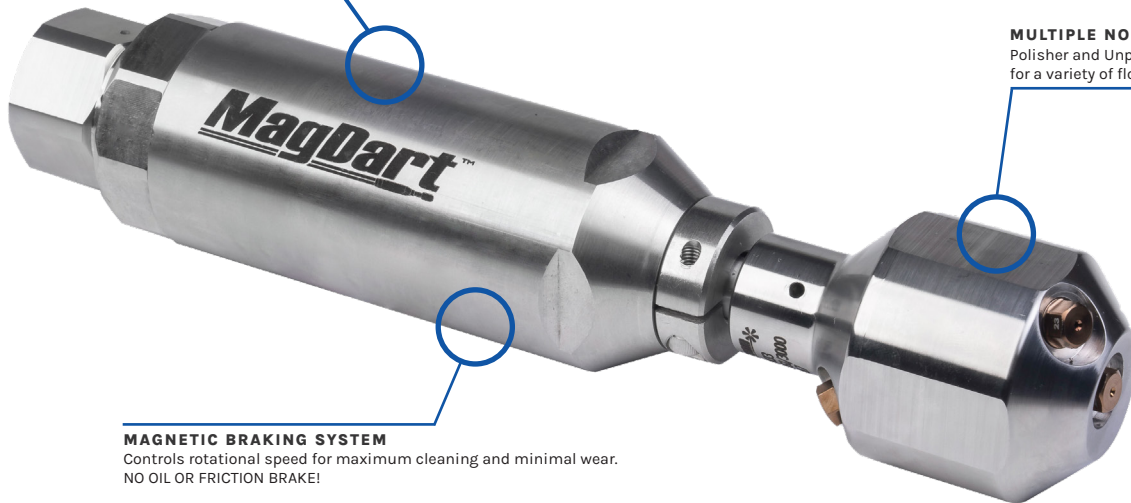
INDUSTRY APPLICATIONS:

- Pipe cleaning
- Drain and sewer lines

MagDartX40™

TWO-MINUTE IN-THE-FIELD OVERHAUL

Rebuild Kit provides easy in-field repair using standard wrenches.
NO SPECIAL TOOLS REQUIRED!



MULTIPLE NOZZLE HOLDERS

Polisher and Unplugging heads available for a variety of flow ranges

MAGNETIC BRAKING SYSTEM

Controls rotational speed for maximum cleaning and minimal wear.
NO OIL OR FRICTION BRAKE!

TOOL PART NUMBER	INLET CONNECTION	SPEED RANGE	DIAMETER		ASSEMBLY LENGTH		ASSEMBLY WEIGHT		MAX. FLOW RATE		MAX. OPERATING PRESSURE	
			IN	MM	IN	MM	LBS	KG	GPM	LPM	PSI	BAR
70624	9/16" HP Female	200 - 1200	2.0	51	9.9	251	4.0	1.81	12	45	43,500	3,000

KITS & ACCESSORIES



Premium kits and Dual Head Premium Kits are available for full product tools. All kits include a durable waterproof case, Signature Tool, assembly tools, and product documentation. All 40K Kits are Premium and include a Rebuild Kit (seal cartridge) and Cartridge Seal Kit. The rebuild Kit and Cartridge Seal Kit provide the ability to **rebuild the tool twice**.

Dual Head Premium Kits include two head assemblies - polisher and unplugging - to provide complete cleaning capabilities.

REBUILD KIT - 57911



The patented seal cartridge facilitates quick seal changes without special tools or small parts that are easy to lose.

TOOL KITS

DESCRIPTION	PREMIUM				DUAL HEAD PREMIUM	
	R10 UNPLUGGER 71868-R10UP	R17 UNPLUGGER 71868-R17UP	R10 POLISHER 71868-R10P	R17 POLISHER 71868-R17P	R10 PREMIUM 71869-R10	R17 PREMIUM 71869-R17
MagDart X40 GEN II Tool	✓	✓	✓	✓	✓	✓
R10 Unplugging Nozzle Holder	✓				✓	
R17 Unplugging Nozzle Holder		✓				✓
R10 Polisher Nozzle Holder			✓		✓	
R17 Polisher Nozzle Holder				✓		✓
Seal Cartridge	✓	✓	✓	✓	✓	✓
Seal Kit	✓	✓	✓	✓	✓	✓
Assembly Tools	✓	✓	✓	✓	✓	✓

ACCESSORIES

Nozzle Holders - Unplugging and polisher nozzle holders available in two different flow rates.

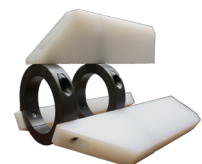


DESIGNATION	PART NO.	OFFSET	FLOW RANGE (GPM)
Unplugging	66418	R10	8 - 12
Unplugging	66433	R17	4 - 8
Polisher	66447	R10	8 - 12
Polisher	66448	R17	4 - 8

Nozzle Extensions - Extensions are installed into the tool to provide a wider cleaning pattern and serve as flow straighteners, further reducing turbulence, for more aggressive waterjets. Sold Individually.



Centralizers - Skid style. Support the tool while providing a controlled, even cleaning along with damage protection.



TANK AND VESSEL CLEANING

H₃Orbiter

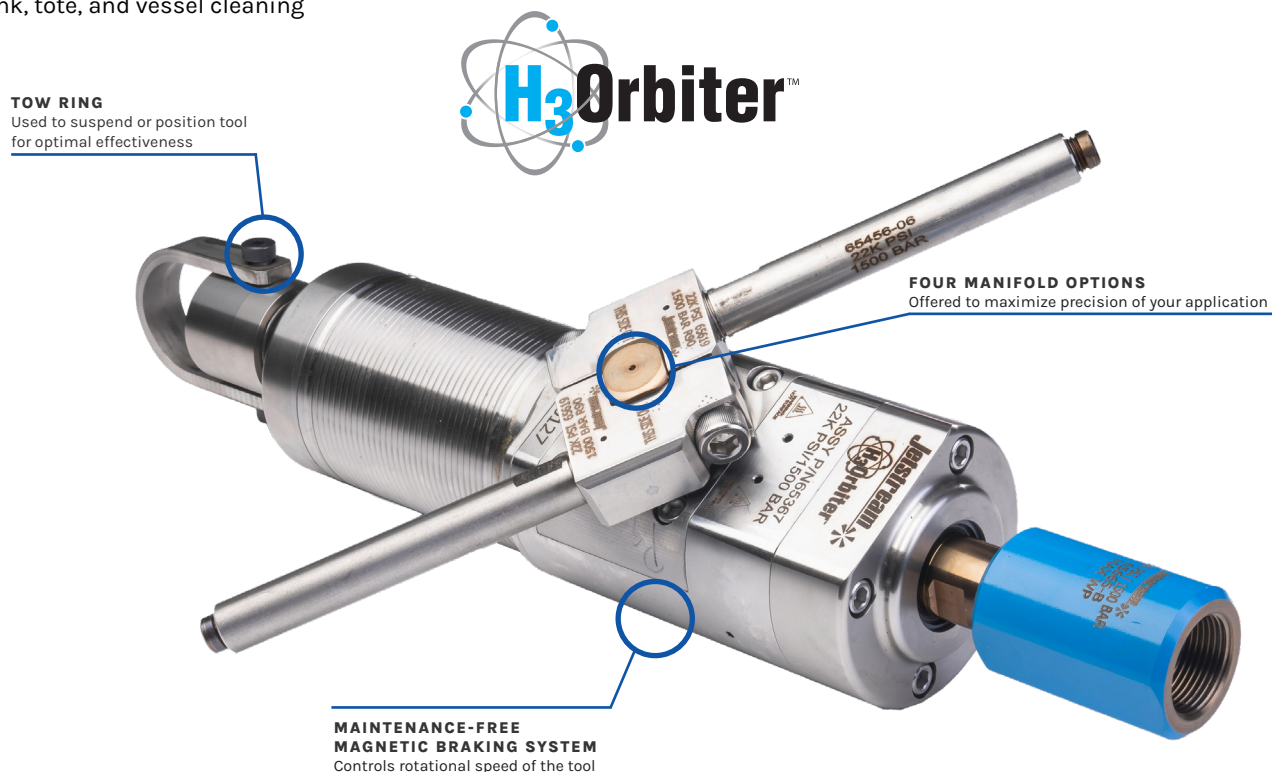
The **H₃Orbiter™** (H₃O) is a 3-D water blasting tool designed to effectively and efficiently clean tanks and vessels. The rotation of the nozzles and body allows the tool to perform a complete 360 degree clean at pressures up to 22,000 psi (1500 bar). Flow rates are controlled through four different manifold options that provide 10 to 80 gpm (37 to 302 lpm): High Flow, Medium Flow, Low Flow, and Extra-Low Flow.

KEY FEATURES:

- H₃Orbiter uses 2 HHTC or JS4 series nozzles.
- Wide range of accessories is available including cage centralizers and extensions. Only 1" or 2" extensions can be used when the H₃Orbiter is installed in the centralizer
- For pipe cleaning, the H₃Orbiter can be placed in a centralizer with an optional kick plate. When installed with the centralizer, the kick plate allows for self-generated forward movement with each 180° rotation of the manifold

INDUSTRY APPLICATIONS:

- Railcars
- Tank, tote, and vessel cleaning



CONNECTION* (MALE)	SPEED RANGE	DIAMETER		ASSEMBLY LENGTH		ASSEMBLY WEIGHT		MAX. FLOW RATE		MAX. OPERATING PRESSURE	
		IN	MM	IN	MM	LBS	KG	GPM	LPM	PSI	BAR
1-1/8" ORS Male	Adjustable; 8-50 rpm	5.12	130	16.65	423	35	16	80	307	22,000	1500

HIGH FLOW COMING SOON

KITS & ACCESSORIES

Premium kits and Starter kits are available for full product tools. All kits include a durable waterproof case, Signature Tool, 2" extensions, assembly tools, and the Product Documentation.

Premium Kits also include all manifolds, additional extensions (6", 12", 24"), and service kit.

TOOL KITS

DESCRIPTION	PREMIUM (65634)
H ₃ Orbiter Tool	✓
Service Kit	✓
Adapter	✓
Type M Adapter	✓
R30, R50, R90, R150 Manifold	✓
2", 6", 12", 24" Extension	✓
1/2" NPT Half Coupling	✓
1-1/8" ORS Coupling	✓
Tow Ring	✓

Starter kits available for specific manifolds and extensions

MANIFOLDS

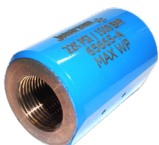
Four manifolds provide a range of flow capabilities between 10 to 80 gpm to match your application High (50 to 80 gpm), Medium (28 to 55 gpm), Low (16 to 30 gpm), and Extra-Low Flow (10 to 18 gpm)



PART NO.	FLOW RATE		DESIGNATION
	GPM	LPM	
65675	50-80	189-303	-030 (R30)
65676	28-55	106-208	-050 (R50)
65677	16-30	61-114	-090 (R90)
65678	10-18	38-68	-150 (R150)

ACCESSORIES

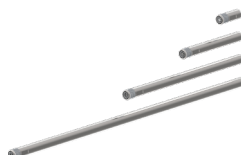
Inlet Adapters



Manifold Assemblies



Nozzles Extensions



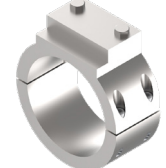
Tow Ring



Centralizer



Optional Kick Plate



R30 STARTER 65633-030	R50 STARTER 65633-050	R90 STARTER 65633-090	R150 STARTER 65633-150
R30	R50	R90	R150
2"	2"	2"	2"

Starter Kits only include specific manifold and 2" extensions

TUBE CLEANING

DrillJet

The DrillJet™ removes deposits and blockages in tubes thanks to the highly efficient self-powered design. Built with only 3 components from advanced materials and coatings, the nozzles offer maintenance-free durability and the ability to clean even completely clogged tubes in a single pass. The nozzle can be used with either rigid or flexible lances. Jetstream is proud to offer a design specifically for **automated applications!**

KEY FEATURES:

- Rotating straight-pattern nozzles produce concentrated streams for more cleaning power than a fan tip or fixed nozzles.
- Front cap protects rotor and allows continuous spinning even after hitting an obstruction for reliable performance
- Supports working pressures up to 22,000 psi
- Cutting-edge manufacturing and materials technology provide increased water velocity for maximum effectiveness

INDUSTRY APPLICATIONS:

- Tube cleaning
- Heat exchanger cleaning



SIZE	TUBE ID RANGE		INLET CONNECTION	FLOW RANGE		DIAMETER		ASSEMBLY LENGTH		MAX. OPERATING PRESSURE	
	MM	IN		MM	GPM	LPM	IN	MM	IN	MM	PSI
9.5	0.47-0.63	12-16	M7, 1/16" NPT, 1/4" LH or 1/4" RH	4.5-8.0	17-30	0.37	9.5	1.54	39.1	15,000 or 22,000	1,000 or 1,500
13	0.60-1.00	15-25	1/8" NPT, 1/8" BSPP, 1/4" LH, 1/4" RH, 3/8" LH or 3/8" RH	7.0-10.0	27-38	0.50	13.0	1.65	42		
18	0.87-1.30	22-33	1/4" NPT, 1/4" BSPP, 9/16" LH, 9/16" RH	10.0-14.0	38-53	0.71	18.0	2.16	54.9		
24	1.10-2.00	28-51	3/8" NPT, 3/8" BSPP, 9/16" LH, 9/16" RH	10.0-24.0	38-91	0.94	24.0	2.54	64.5		
33	1.50-2.40	38-61	1/2" NPT, 1/2" BSPP, 9/16" MP GLAND	8.0-47.0	30-178	1.30	33.0	3.30	83.8		

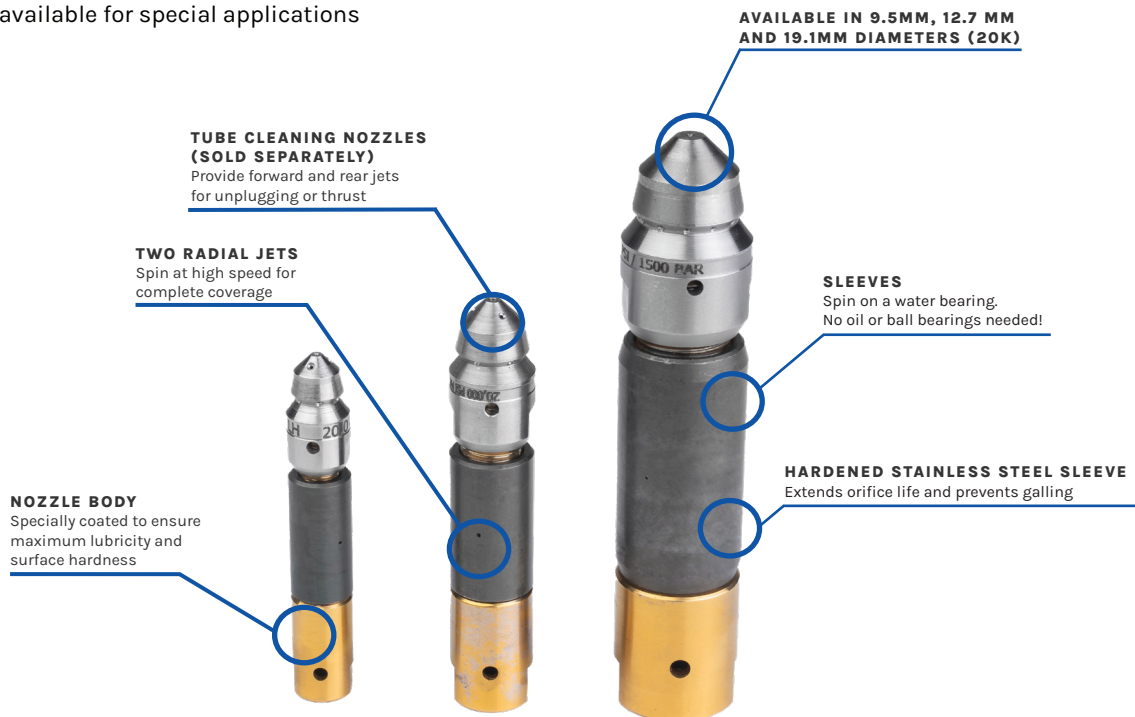
TUBE CLEANING

Tube Spinners

Jetstream **Tube Spinner Nozzles** provide the most thorough cleaning of tube walls. Maximum impact and the elimination of streaking result from having two larger spinning jets rather than several smaller non-rotating jets.

KEY FEATURES:

- Self-rotating sleeve has two radial jets that spin at high speed for complete coverage
- HPFR/HPFL or HPER/HPEL tube cleaning nozzles are connected to the tube spinner nozzle to add forward jets for unplugging tubes and/or rearward jets to pull nozzles and flex lance through tube (sold separately)
- HPFR/HPFL nozzle blanks, can be installed in place of HPFR/HPFL or HPER/HPEL nozzles when no forward or rearward jets are required
- Tube Spinner outside diameters are the same as standard tube cleaning nozzles
- Custom flow rates available for special applications



PART NO.	FLOW RATE NO.	INLET CONNECTION (FEMALE)	OUTSIDE DIAMETER		LENGTH (WITH HPF NOZZLE)**		10,000 psi (690 bar)		12,500 psi (862 bar)		15,000 psi (1,034 bar)		17,500 psi (1,207 Bar)		20,000 psi (1,379 bar)	
			IN	MM	IN	MM	GPM	LPM	GPM	LPM	GPM	LPM	GPM	LPM	GPM	LPM
64199	1	1/4" MP LH	.375	9.5	2.22/2.57	55/65	2.3	8.7	2.7	10.2	3.0	11.4	3.4	12.9	3.8	14.4
64200	1	1/4" MP RH	.375	9.5	2.22/2.57	55/65	2.3	8.7	2.7	10.2	3.0	11.4	3.4	12.9	3.8	14.4
64201	1	3/8" MP LH	.500	12.7	2.57/2.99	65/76	3.3	12.5	3.9	14.8	4.5	17.0	5.1	19.3	5.7	21.6
64202	1	3/8" MP RH	.500	12.7	2.57/2.99	65/76	3.3	12.5	3.9	14.8	4.5	17.0	5.1	19.3	5.7	21.6
64203	1	9/16" MP LH	.750	19.1	3.55/4.02	90/102	4.5	17.0	5.5	20.8	6.4	24.2	7.4	28.0	8.5	32.2
64204	1	9/16" MP RH	.750	19.1	3.55/4.02	90/102	4.5	17.0	5.5	20.8	6.4	24.2	7.4	28.0	8.5	32.2
64205	2	9/16" MP LH	.750	19.1	3.55/4.02	90/102	8.8	33.3	10.3	39.0	11.7	44.3	13.1	49.6	14.6	55.3
64206	2	9/16" MP RH	.750	19.1	3.55/4.02	90/102	8.8	33.3	10.3	39.0	11.7	44.3	13.1	49.6	14.6	55.3

**MP connection uses HPFR/HPFL/HPER/HPEL cap nozzle. Lengths are HPFR and HPFL/HPER and HPEL respectively. SOLD SEPARATELY.

**15K options available with BSPP, M7, and NPT connections. Contact a Jetstream representative for more information.

TOOL RENTALS

Jetstream provides pumps, parts, and tool rentals for all the demands of your job. You can pick up the equipment you need, or we can deliver it straight to your job site. Our tools are ready to work the second they arrive on-site and are backed by our world-class customer support team and highly trained technicians that are committed to the success of your project.

BEST-IN-CLASS SERVICE AND SUPPORT, TAILORED TO YOU

Jetstream is a subsidiary of Federal Signal Corporation's Environmental Solutions Group. Member companies include Vector Manufacturing, TRUVAC, Guzzler Manufacturing, Westech Vac Systems, Ltd., and Elgin Sweeper Company.



If you need service and support for your equipment, Jetstream has you covered with the most experienced and customer-focused team in the industry.

In the United States, our products are serviced by FS Solutions. With 13 convenient locations, FS Solutions provides high-performance parts and accessories, Jetstream rentals, repair and rebuild, and safety training services. In Canada, Joe Johnson Equipment (JJE) is there to handle your every need.

Whatever your needs may be, Jetstream offers a full range of products, services, and customized solutions designed to keep your products and projects running smoothly, effectively, and efficiently!



VALVE REBUILD PROGRAM

Get same as new performance and reliability for your valves with Jetstream's Valve Rebuild Program (VRP).

The program utilizes OEM parts and processes to maximize the value of your equipment by:

- Reducing hourly operational costs
- Boosting up-time
- Optimizing reliability
- Restoring original system performance
- Increasing return on investment

We guarantee to provide new seals, springs, suction/discharge valve, and lapping with every rebuild.

TRADE-IN PROGRAM

The Trade-In Program offers customers an opportunity to exchange any competitor tools for credit towards Jetstream Signature Series Premium Kits. Tools do not have to be functional, but they must be a complete part.

**Discounts applied at the time of trade-in.*





TRAINING

To ensure customer satisfaction, Jetstream has developed the Right Start program, a four-step plan designed to provide the owners and operators of new Jetstream waterblast units with the knowledge and support needed to feel familiar, confident, and satisfied with Jetstream equipment and personnel.

TRANSPORTATION

Once a new water blaster is built and thoroughly tested, the Shipping Manager contacts the new owner to arrange for the unit's arrival to the right place at the right time.

TRAINING

All new water blasters include personal training by a Jetstream Technician. Training involves both classroom and "hands-on" instruction to make sure that each operator is thoroughly familiar with the design and function of the unit and accessories, enabling him to safely put the new equipment to optimal use.

FOLLOW-UP

Within 30 days of delivery, and again within 60 days, the Solutions Provider will call to answer any questions and ensure complete satisfaction.

TRUST

If any questions or problems ever arise, the Jetstream team is available and committed to providing prompt answers and solutions.

PREPARING YOU TO SUCCEED

Jetstream provides a wide range of training courses

PUMP OPERATION & MAINTENANCE: The course combines extensive hands-on training with classroom instruction and is recommended for maintenance personnel, operators, and supervisors.

FS SOLUTIONS SAFETY TRAINING: As the experts on waterblast and industrial vacuum equipment, FS Solutions makes OSHA training and compliance more convenient than ever through hands on courses developed by Gary Toothe, whose significant contributions and 25 years of experience are well-known in the waterblast and industrial vacuum industries.

ONLINE WITH FEDERAL SIGNAL ESG UNIVERSITY: FS Solutions offers interactive courses through our Federal Signal Environmental Solutions Group University on subjects ranging from operator skill and safety to advanced classes for supervisors and managers in water blasting and industrial vacuum technologies.





RENTAL & SERVICE CENTERS:

La Porte, TX (281) 674-8668	Gonzales, LA (225) 647-0660
Toledo, OH (888) 415-7368	Salt Lake City, UT (801) 808-4590
New Brunswick, NJ (732) 448-7830	Long Beach, CA (866) 515-9891
Highland, IN (219) 924-3180	Aurora, CO (720) 896-0165
Lexington, SC (803) 996-0741	Lakewood, WA (253) 584-0653
Leeds, AL (800) 822-8785	Tampa, FL (813) 477-8691
Corpus Christi, TX (361) 360-7601	

Jetstream has the most comprehensive products, service, rental, and training in the industry. Whether you are looking to purchase or rent water blasting equipment, or if you need service and support for your existing equipment, we've got you covered with the most experienced and customer-focused team in the industry.

In the United States, our products are serviced by FS Solutions. With 13 convenient locations, FS Solutions provides high-performance parts and accessories, Jetstream rentals, repair and rebuild, and safety training services. In Canada, Joe Johnson Equipment (JJE) is there to handle your every need.

Jetstream is a subsidiary of Federal Signal Corporation and has the financial strength, backing, and network of distributors around the world to support any customer.

INTERNATIONAL DISTRIBUTORS

Orbitec Santiago, Chile	FS Asia Shanghai, China
Powerjet Rentals Glasgow, Scotland	Asia Waterjet Singapore
Asia Waterjet Dubai, UAE	
Total Blasting Johannesburg, South Africa	

JETSTREAM OF HOUSTON

4133 Southerland Rd
HOUSTON, TEXAS 77092

(832) 590-1300

